

# BLACKBERRY HILL FARMS SUBDIVISION

LYING PARTLY IN THE NORTH ONE HALF OF THE SOUTHWEST QUARTER OF SECTION 22 TOWNSHIP 4 SOUTH RANGE 14 EAST, SUWANNEE COUNTY, FLORIDA

ON NEW MAP 12-13-96  
 12-13-96  
 SPARE FOOTING MORE OR LESS

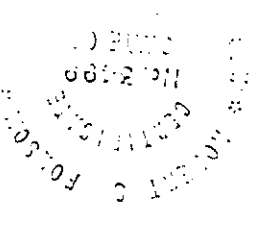
DEPARTMENT OF REVENUE, COUNTY OF SUWANNEE, FLORIDA. I HEREBY CERTIFY THAT THE ABOVE DESCRIBED PROPERTY IS THE PROPERTY OF THE COUNTY OF SUWANNEE, FLORIDA, AND THAT THE SAME IS SUBJECT TO THE TAXES AND DUES THEREON AS PROVIDED BY LAW. THE COUNTY OF SUWANNEE, FLORIDA, HAS BEEN ADVISED BY THE COUNTY CLERK THAT THE PROPERTY IS SUBJECT TO THE TAXES AND DUES THEREON AS PROVIDED BY LAW. THE COUNTY OF SUWANNEE, FLORIDA, HAS BEEN ADVISED BY THE COUNTY CLERK THAT THE PROPERTY IS SUBJECT TO THE TAXES AND DUES THEREON AS PROVIDED BY LAW.

### Surveyor's Certificate

I hereby certify that I have subdivided the aforesaid property and have placed Permanent Reference Monuments and Permanent Control Points as called for in Chapter 177, Florida Statutes, and that this plat is a true and correct representation of the land subdivided and that said survey was made under my responsible direction and supervision and that said survey complies with all of the requirements of Chapter 472027, Florida Statutes.

Date: Nov. 2, 1998

*Robert S. Folsom*  
 Robert S. Folsom  
 Professional Surveyor and Mapper  
 Florida Certificate Number 3499



County Attorney's Approval  
 I do hereby approve this plat as to the wording of dedication and certification for Suwannee County, Florida.

Date: 10-20-98

*Bill O. Bess*  
 Bill O. Bess  
 Suwannee County Attorney

County Commissioner's Approval  
 I do hereby certify that this plat has been approved and accepted by the Board of County Commissioners of Suwannee County, Florida.

Date: Oct. 20, 1998

*John Scott*  
 John Scott  
 Chairman of the Board  
 County Commissioners  
 Attest  
*Randy Henderson*  
 Randy Henderson  
 Attest

Clerk's Approval  
 This plat has been filed for record in the Public Records of Suwannee County, Florida, this 2 day of October, 1998.

*ESD Blake*  
 Clerk of Courts

Dedication  
 We, Ronald D. Poole and Dale D. McCallister, Jr., do hereby certify that we are the owners of the above described BLACKBERRY HILL FARMS SUBDIVISION and have caused the same to be surveyed and subdivided and hereby dedicate to the public forever the

*Ronald D. Poole*  
 Ronald D. Poole  
 123 East Howard St.  
 Live Oak, Florida 32060

*Dale D. McCallister, Jr.*  
 Dale D. McCallister, Jr.  
 P.O. Box 375  
 Live Oak, Florida 32064

*Robert S. Folsom*  
 Robert S. Folsom  
 Professional Surveyor and Mapper  
 Florida Certificate Number 3499

*John Scott*  
 John Scott  
 Chairman of the Board  
 County Commissioners  
 Attest  
*Randy Henderson*  
 Randy Henderson  
 Attest

*ESD Blake*  
 Clerk of Courts

*Robert S. Folsom*  
 Robert S. Folsom  
 Professional Surveyor and Mapper  
 Florida Certificate Number 3499

*John Scott*  
 John Scott  
 Chairman of the Board  
 County Commissioners  
 Attest  
*Randy Henderson*  
 Randy Henderson  
 Attest

*ESD Blake*  
 Clerk of Courts

*Robert S. Folsom*  
 Robert S. Folsom  
 Professional Surveyor and Mapper  
 Florida Certificate Number 3499

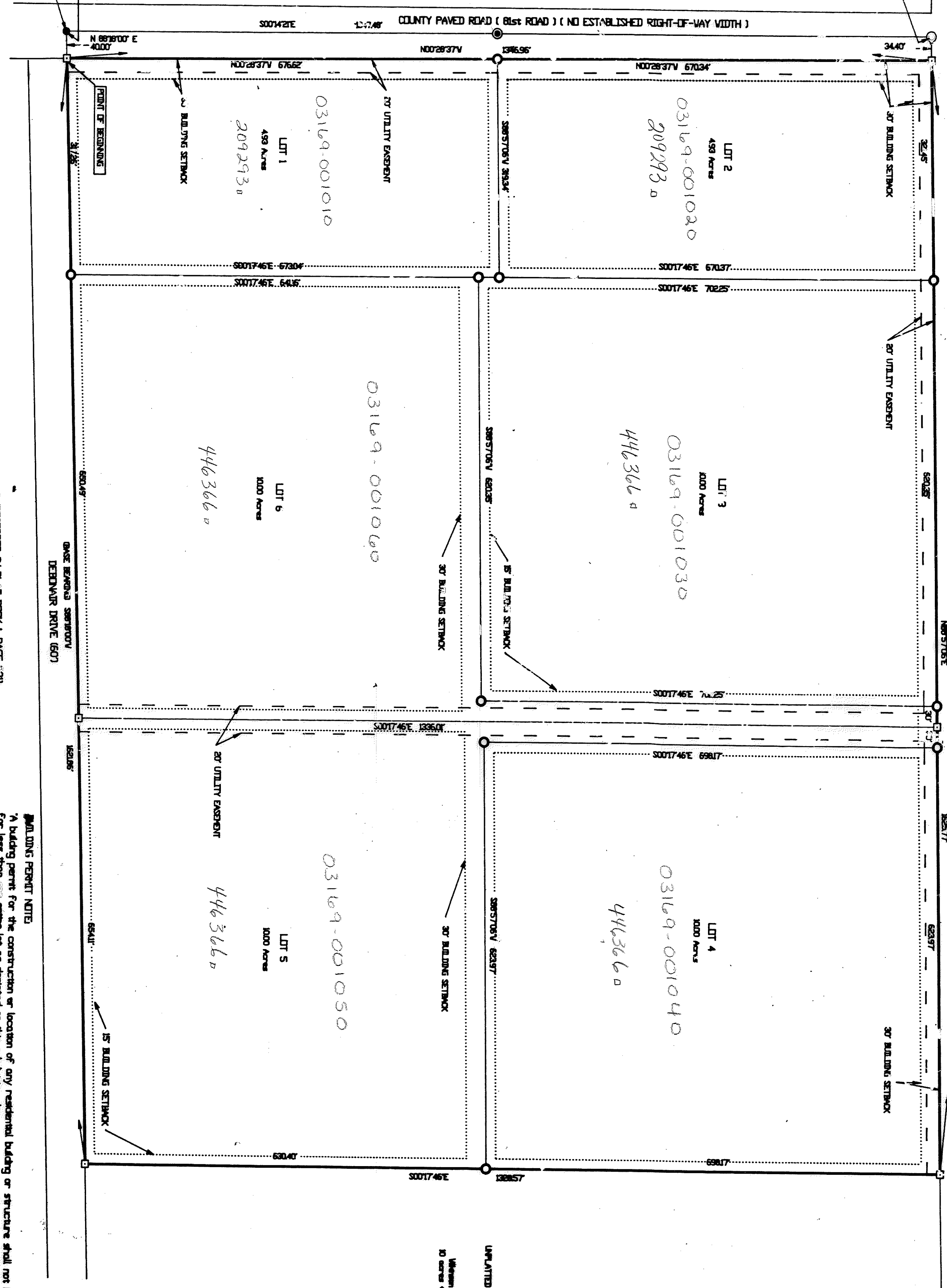
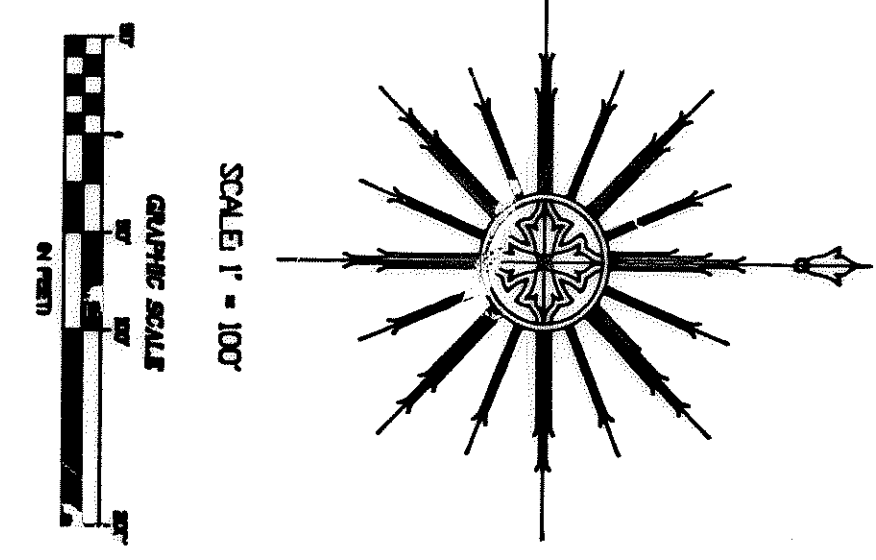
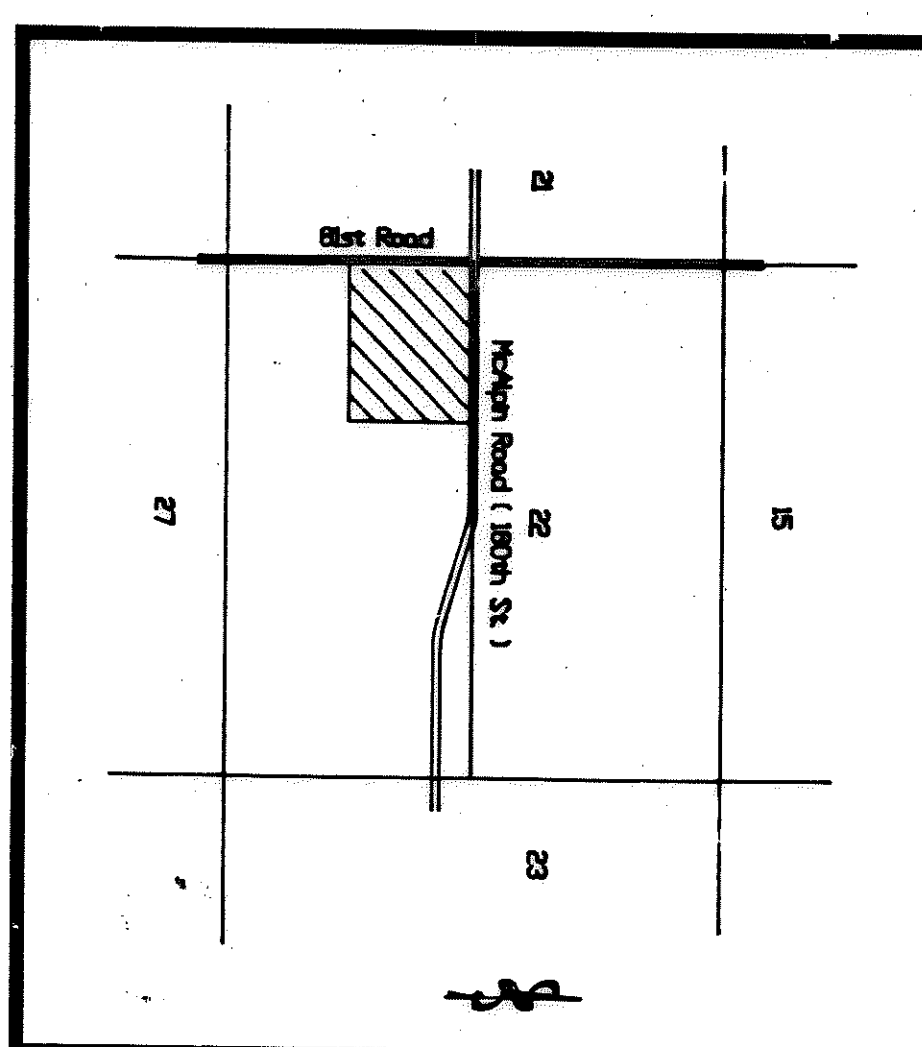
*John Scott*  
 John Scott  
 Chairman of the Board  
 County Commissioners  
 Attest  
*Randy Henderson*  
 Randy Henderson  
 Attest

*ESD Blake*  
 Clerk of Courts

*Robert S. Folsom*  
 Robert S. Folsom  
 Professional Surveyor and Mapper  
 Florida Certificate Number 3499

*John Scott*  
 John Scott  
 Chairman of the Board  
 County Commissioners  
 Attest  
*Randy Henderson*  
 Randy Henderson  
 Attest

*ESD Blake*  
 Clerk of Courts



Heretofore Dedication  
 We, V. E. Music and Vicki C. Music, holders of that certain mortgage recorded in Official Record Book 664, pages 664 thru 670, Suwannee County Public Records, consent and agree to the platting of the lands, enhanced covering said property, that all pieces or parcels of land shown on said plat and the dedication to the public will be exempt from said suit and the dedication will remain in full force and effect.

*Vicki C. Music*  
 Vicki C. Music  
 1998, before me  
 I hereby certify that on the 23 day of October, 1998, before me  
 I personally appeared V. E. Music and Vicki C. Music, who being known to me and acknowledged the same to be their free and voluntary act  
 and acknowledged the same to be their free and voluntary act.

*Robert S. Folsom*  
 Robert S. Folsom  
 Professional Surveyor and Mapper  
 Florida Certificate Number 3499

*John Scott*  
 John Scott  
 Chairman of the Board  
 County Commissioners  
 Attest  
*Randy Henderson*  
 Randy Henderson  
 Attest

*ESD Blake*  
 Clerk of Courts

*Robert S. Folsom*  
 Robert S. Folsom  
 Professional Surveyor and Mapper  
 Florida Certificate Number 3499

*John Scott*  
 John Scott  
 Chairman of the Board  
 County Commissioners  
 Attest  
*Randy Henderson*  
 Randy Henderson  
 Attest

*ESD Blake*  
 Clerk of Courts

*Robert S. Folsom*  
 Robert S. Folsom  
 Professional Surveyor and Mapper  
 Florida Certificate Number 3499

*John Scott*  
 John Scott  
 Chairman of the Board  
 County Commissioners  
 Attest  
*Randy Henderson*  
 Randy Henderson  
 Attest

*ESD Blake*  
 Clerk of Courts

*Robert S. Folsom*  
 Robert S. Folsom  
 Professional Surveyor and Mapper  
 Florida Certificate Number 3499

*John Scott*  
 John Scott  
 Chairman of the Board  
 County Commissioners  
 Attest  
*Randy Henderson*  
 Randy Henderson  
 Attest

*ESD Blake*  
 Clerk of Courts

*Robert S. Folsom*  
 Robert S. Folsom  
 Professional Surveyor and Mapper  
 Florida Certificate Number 3499