

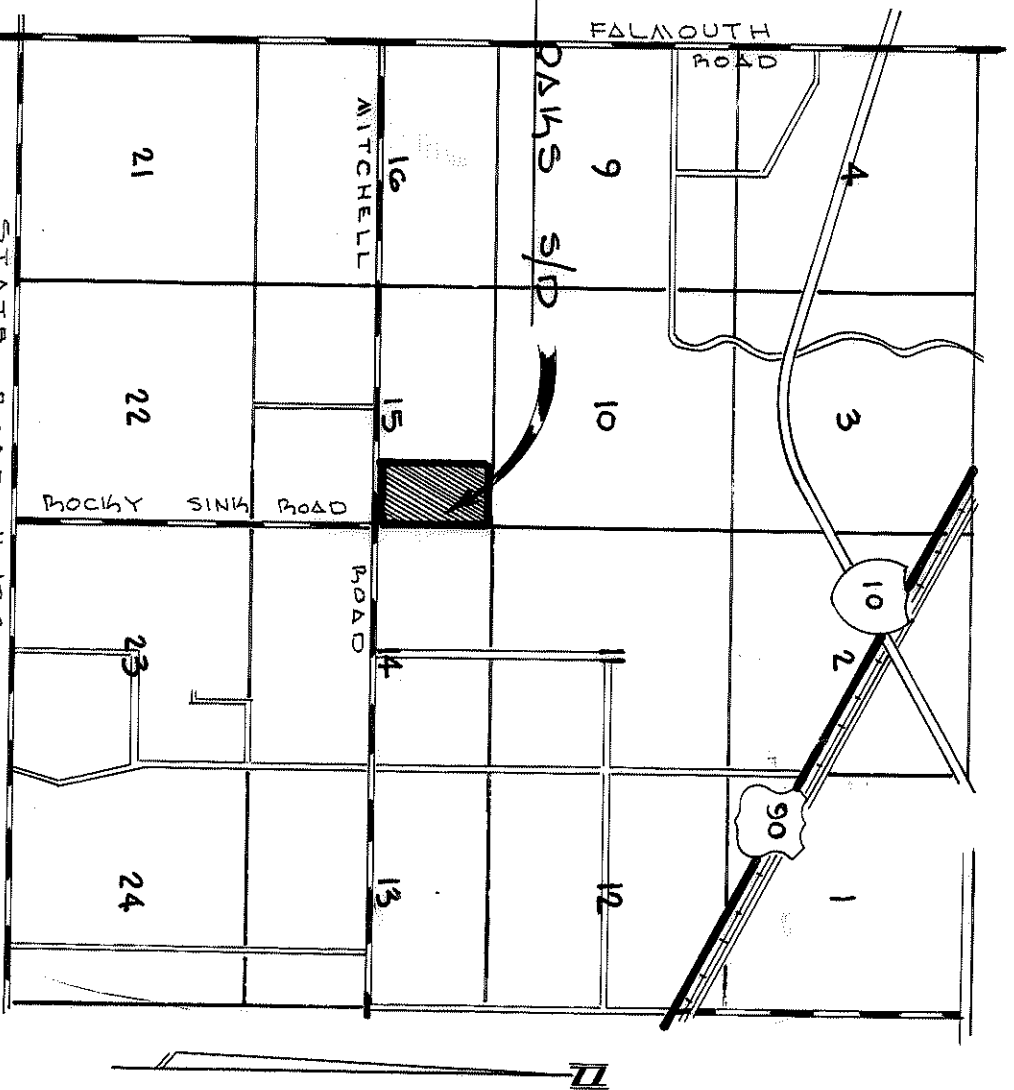
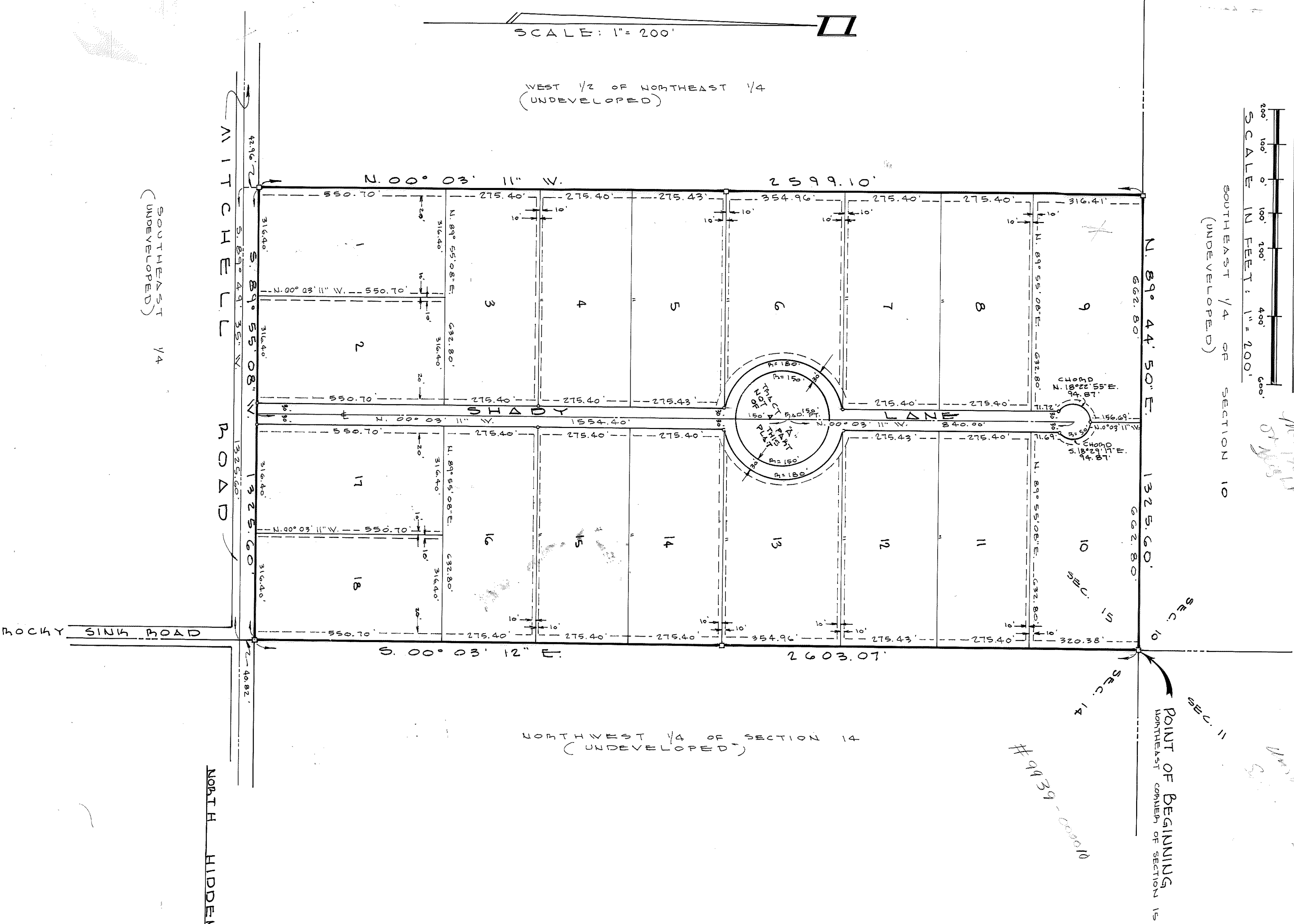
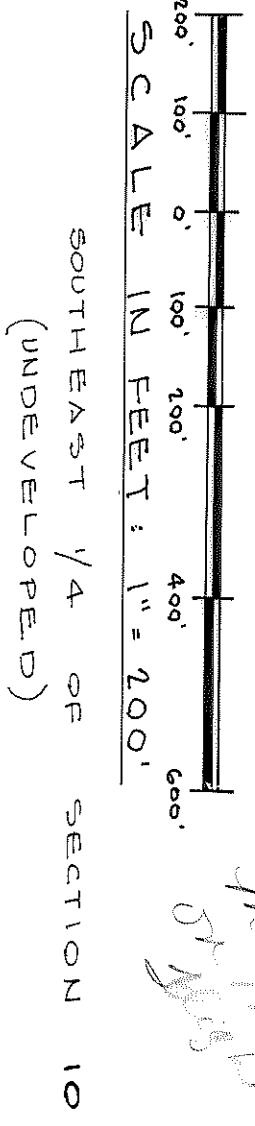
North Hidden Oaks

NORTH HIDDEN OAKS SUBDIVISION

SITUATED IN THE EAST 1/2 OF THE NORTHEAST 1/4 OF SECTION 15, TOWNSHIP 2 SOUTH, RANGE 11 EAST, SUWANNEE COUNTY, FLORIDA.

PLAT BOOK PAGE 201

GRAPHIC SCALE



DESCRIPTION
PART OF THE EAST 1/2 OF THE NORTHEAST 1/4 OF SECTION 15, TOWNSHIP 2 SOUTH, RANGE 11 EAST, SUWANNEE COUNTY, FLORIDA, BEING MORE PARTICULARLY DESCRIBED AS FOLLOWS: FOR POINT OF BEGINNING, COMMENCE AT THE NORTHEAST CORNER OF SAID SECTION 15, THENCE RUN SOUTH 89° 51' 08" WEST ALONG THE EAST LINE OF SAID SECTION 15, A DISTANCE OF 2,603.01 FEET TO THE NORTHERLY RIGHT-OF-WAY LINE OF ATTICHELL ROAD AS NOW ESTABLISHED; THENCE RUN SOUTH 89° 51' 08" WEST ALONG SAID NORTHERLY RIGHT-OF-WAY LINE 1325.60 FEET TO THE WEST LINE OF SAID EAST 1/2 OF THE NORTHEAST 1/4; THENCE RUN NORTH 00° 03' 11" WEST ALONG SAID WEST LINE, A DISTANCE OF 2594.10 FEET TO THE NORTH LINE OF SAID SECTION 15; THENCE RUN NORTH 89° 44' 50" EAST ALONG SAID NORTH LINE, A DISTANCE OF 1325.60 FEET TO THE POINT OF BEGINNING.

ADOPTION AND DEDICATION
WE HEREBY CERTIFY THAT WE AS THE HAVING OWNERS OF THE LANDS DESCRIBED HEREIN, AND THAT WE HAVE CAUSED THE SAME TO BE SURVEYED AND SUBDIVIDED AND THIS PLAT HEREON SUBMITTED, MADE IN ACCORDANCE WITH SAID SURVEY IS HEREBY ADOPTED AS THE TRUE AND CORRECT PLAT OF SAID SUBDIVISION, AND ALL ROADS AND EASEMENTS SHOWN HEREON ARE HEREBY ACCEPTED AND WITHOUT RESERVATION, DEDICATED TO THE PUBLIC.

Janice Price
WITNESS
Janice Price
WITNESS
Shelley Price
WITNESS
Richard E. Nick
NOTARY PUBLIC
Mary J. Wolf
OVERSEER

STATE OF FLORIDA COUNTY OF SUWANNEE
I, *Steve D. Haggerty*, COUNTY CLERK, DO HEREBY CERTIFY THAT THE ABOVE DESCRIBED PART OF THE EAST 1/2 OF THE NORTHEAST 1/4 OF SECTION 15, TOWNSHIP 2 SOUTH, RANGE 11 EAST, SUWANNEE COUNTY, FLORIDA, WAS FILED IN MY OFFICE ON THE DAY OF APRIL, A.D. 1978.

COUNTY COMMISSION APPROVAL
EVALUATED AND APPROVED BY THE COUNTY COMMISSION OF SUWANNEE COUNTY, FLORIDA, THIS DAY OF OCT 6, 1981

ATTEST: *Honey Ann*

CLERK'S CERTIFICATE
THIS IS TO CERTIFY THAT THIS PLAT HAS BEEN FILED FOR RECORD AND RECORDED IN PLAT BOOK PAGE 201 OF THE PUBLIC RECORDS OF SUWANNEE COUNTY, FLORIDA, THIS DAY OF JUNE, A.D. 1978.

SURVEYOR'S CERTIFICATE
I HEREBY CERTIFY THAT THIS PLAT IS A CORRECT REPRESENTATION OF THE LANDS AS SURVEYED UNDER MY DIRECTION AND SUPERVISION AND THAT THE SURVEY WAS MADE IN ACCORDANCE WITH THE REQUIREMENTS OF CHAPTER 177 OF THE LAWS OF THE STATE OF FLORIDA AND THAT THE PERMANENT CONTROL POINTS HAVE BEEN SET ACCORDING TO THE ABOVE REFERENCED LAWS AS SHOWN. SIGNED THIS 29TH DAY OF JANUARY, A.D. 1978.

SIGNED: *Shelley Price*
SHELLY PRICE, P.S. REG. NO. 2245
J. SHEFFERSON FRIER, LAND SURVEYOR
LIVE OAKS, FLORIDA, 32060

SURVEYOR'S NOTE:
BEARINGS SHOWN HEREON ARE PROJECTED FROM STATE ROAD NO. 136 (SECTION 10 3755-150)

LEGEND
P.P.M. - PERMANENT REFERENCE MONUMENT
P.C.P. - PERMANENT CONTROL POINT
DOTTED - 20' UTILITY EASEMENT