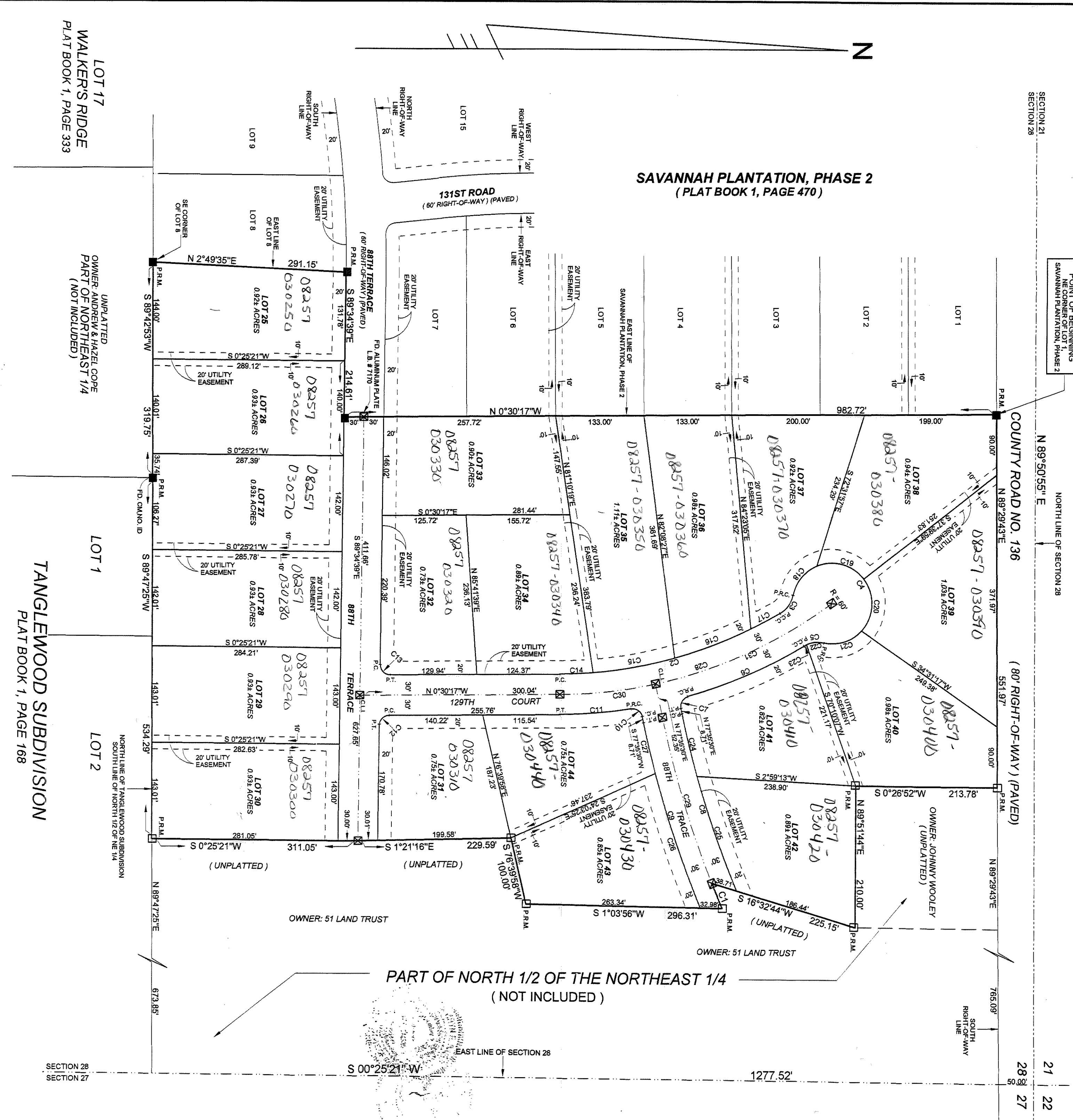
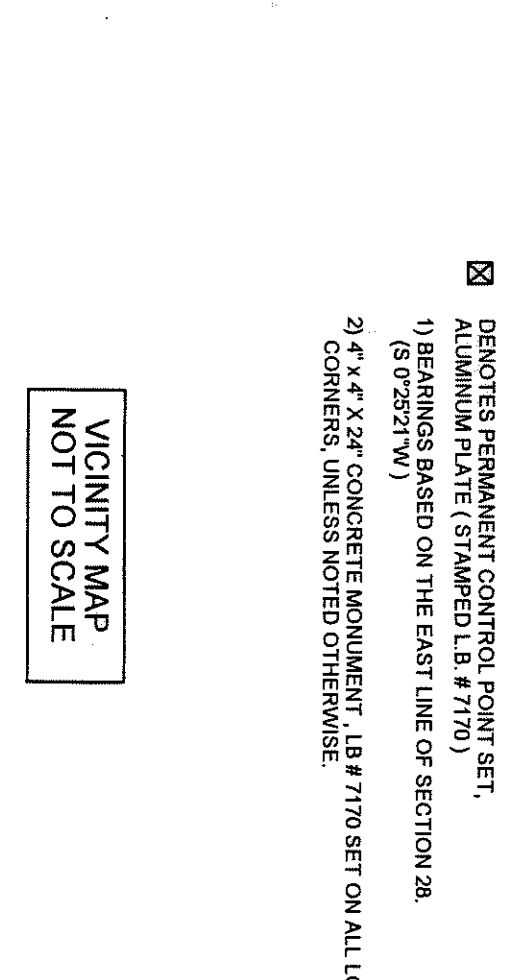


SAVANNAH PLANTATION, PHASE 3

PART OF THE NORTH 1/2 OF THE NORTHEAST 1/4 OF SECTION 28, TOWNSHIP 2 SOUTH, RANGE 18 EAST, SAVANNAH COUNTY, FLORIDA, BEING MORE PARTICULARLY DESCRIBED AS FOLLOWS: FOR POINT OF BEGINNING COMMENCE AT THE NORTH-EAST CORNER OF LOT 1...



LEGEND AND NOTES: DENOTES P.R.M. (PERMANENT REFERENCE MONUMENT) SET, 4" x 4" x 24" CONCRETE MONUMENT, L.B.# 7710...



CURVE TABLE table with columns for Curve, Data, Angle, Chord, and Stationing.

NOTICE: This plat, as recorded in the public records of this county, is the official depiction of the subdivided lands described herein and will be binding on all parties...

DEDICATION OF MORTGAGE: I HEREBY CERTIFY ON THIS 10th DAY OF OCTOBER, A.D. 2004, BEFORE ME PERSONALLY APPEARED DONALD EDWARDS, JR., MORTGAGEE...

ADOPTION AND DEDICATION: KNOWN ALL MEN BY THESE PRESENTS THAT WILLIAM MARABLE, JR. AND WILLIAM MARABLE AND DONALD EDWARDS, JR. AS TRUSTEES OF '51 LAND TRUST'...

STATE OF FLORIDA, COUNTY OF SUWANNEE: APPROVED BY BOARD OF COUNTY COMMISSIONERS, SUWANNEE COUNTY, FLORIDA. NOTARY PUBLIC, STATE OF FLORIDA.