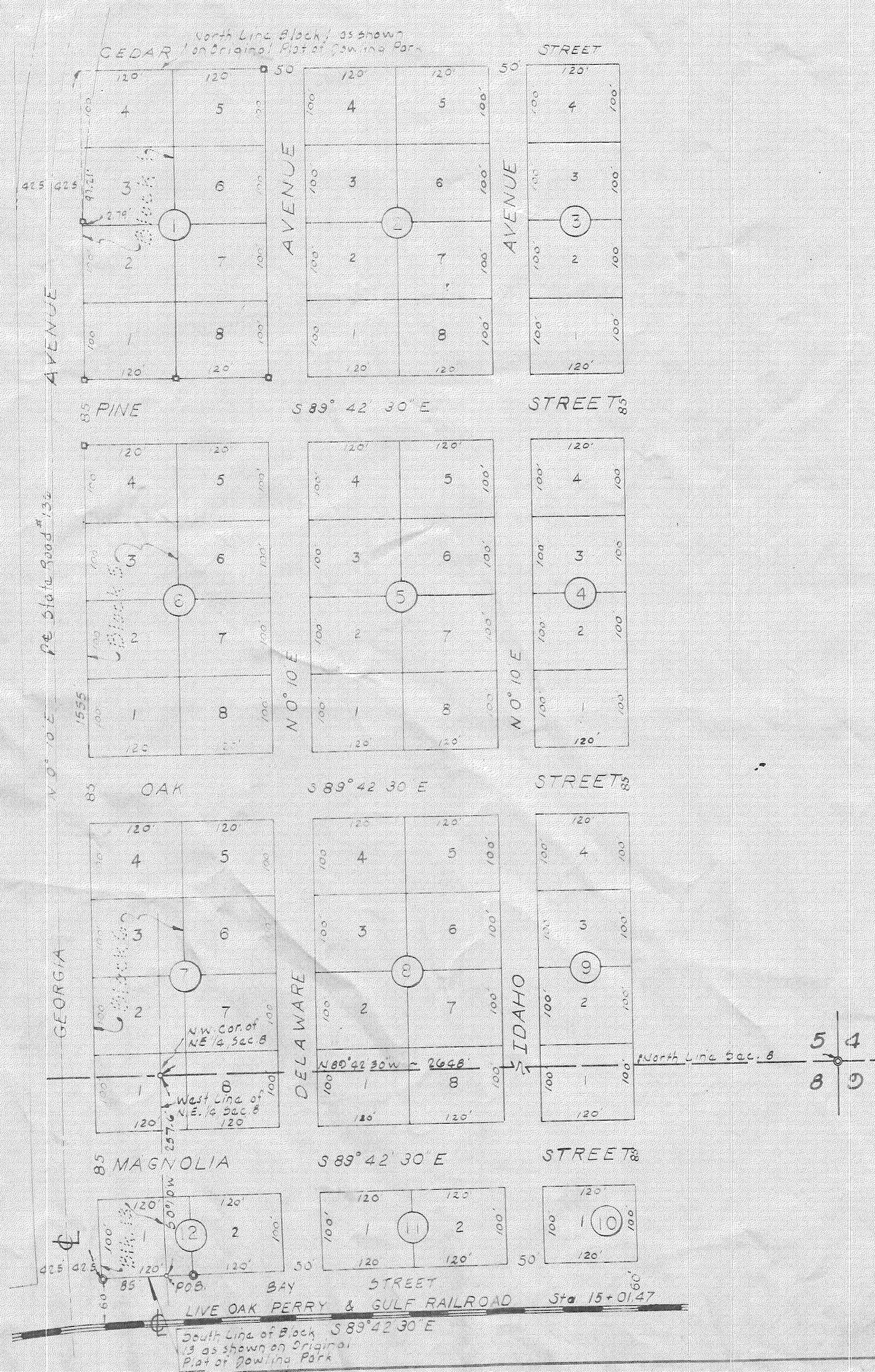


## ADVENT CHRISTIAN HOME SUBDIVISION

A SUBDIVISION OF A PART OF GOVERNMENT LOTS 4 & 6, SECTION 5,  
AND A PART OF GOVERNMENT LOT 3 AND THE NW 1/4 OF THE NE 1/4  
OF SECTION 8, TOWNSHIP 3 SOUTH, RANGE 11 EAST, SUWANNEE COUNTY,  
FLORIDA, INCLUDING BLOCKS 5, 6 & 13 AND THAT PART OF BLOCK 1 LYING  
EAST OF STATE ROAD NO. 136, BEING ALSO GEORGIA AVENUE, DOWLING  
PARK SUBDIVISION, SUWANNEE COUNTY, FLORIDA



### DESCRIPTION:

Commence at the Northeast Corner of Section 8, Township 3 South, Range 11 East and run N 89° 42' 30" W along the North Line said Section 2628 feet; thence S 0° 10' W 257.6 feet to the South Line of Block 13, Dowling Park Subdivision for a Point of Beginning; thence N 89° 42' 30" W along said South Line 85 feet to the Southwest Corner said Block 13; thence N 0° 10' E along East Line Georgia Avenue 1555 feet to the Northwest Corner Block 1, Dowling Park Subdivision; thence S 89° 42' 30" E 700 feet; thence S 0° 10' W 1555 feet to the North Line of Bay Street Extended; thence N 89° 42' 30" W along said North Line 615 feet to the Point of Beginning, Less and Except that Portion of Lots 3 and a Block 1, Dowling Park Subdivision taken by State Road Department for Rights of Way.

### DEDICATION:

Know all men by these Present that Advent Christian Home Incorporated, a Florida Corporation Has Caused the Lands Hereon Described to be Surveyed, Laid Out, Subdivided and Platted, to be known as Advent Christian Home Subdivision, in Witness thereof the said Advent Christian Home Incorporated, has caused these present to be signed in its Name by its President and its Secretary and its Corporate Seal to be affixed, and that the streets and Avenues shown are hereby dedicated to the Public.

### ADVENT CHRISTIAN HOME, INCORPORATED

SIGNED: Bennett R. Wattle PRESIDENT WITNESS: Ina Hart CORPORATE SEAL  
 ATTEST: W. L. Walker SECRETARY WITNESS: Ina Hart  
 DATE: Dec 8 1964

### ACKNOWLEDGMENT:

STATE OF FLORIDA:  
 COUNTY OF SUWANNEE:  
 I hereby certify that on this 8th day of Dec, 1964 before personally appeared John A. Corgile and W. A. Walker, respectively, President and Secretary of Advent Christian Home Incorporated, a Corporation licensed by the State of Florida, to me known to be the Individuals and officers described in and who executed the foregoing dedication and severally acknowledged the execution thereof to be their free act and deed as such officers thereunto duly authorized and that the official seal of said corporation is duly affixed thereto and the said dedication is the act and deed of said corporation.

Witness my hand and official seal at Quincy, State of Florida this 8th day of Dec, 1964.

Lillian L. Radford  
 Notary Public, State of Florida  
 My Commission Expires 8/24/68 NOTARY SEAL

### SURVEYORS CERTIFICATE:

I hereby certify that I am a duly authorized Land Surveyor and that the land hereon described has been surveyed, laid out, subdivided, and platted as shown on this plat under my direction and that the P.R.M.s have been set according to law

Bennett R. Wattle  
 BENNETT R. WATTLE, LAND SURVEYOR  
 FLA. REG. CERT. No. 1443 SURVEYORS SEAL

### APPROVED BY COUNTY COMMISSION SUWANNEE COUNTY, FLORIDA

DATE: 12-8-64  
 SIGNED: Bill H. Bond Chairman  
 ATTEST: Lawrence A. Simon Clerk COUNTY SEAL