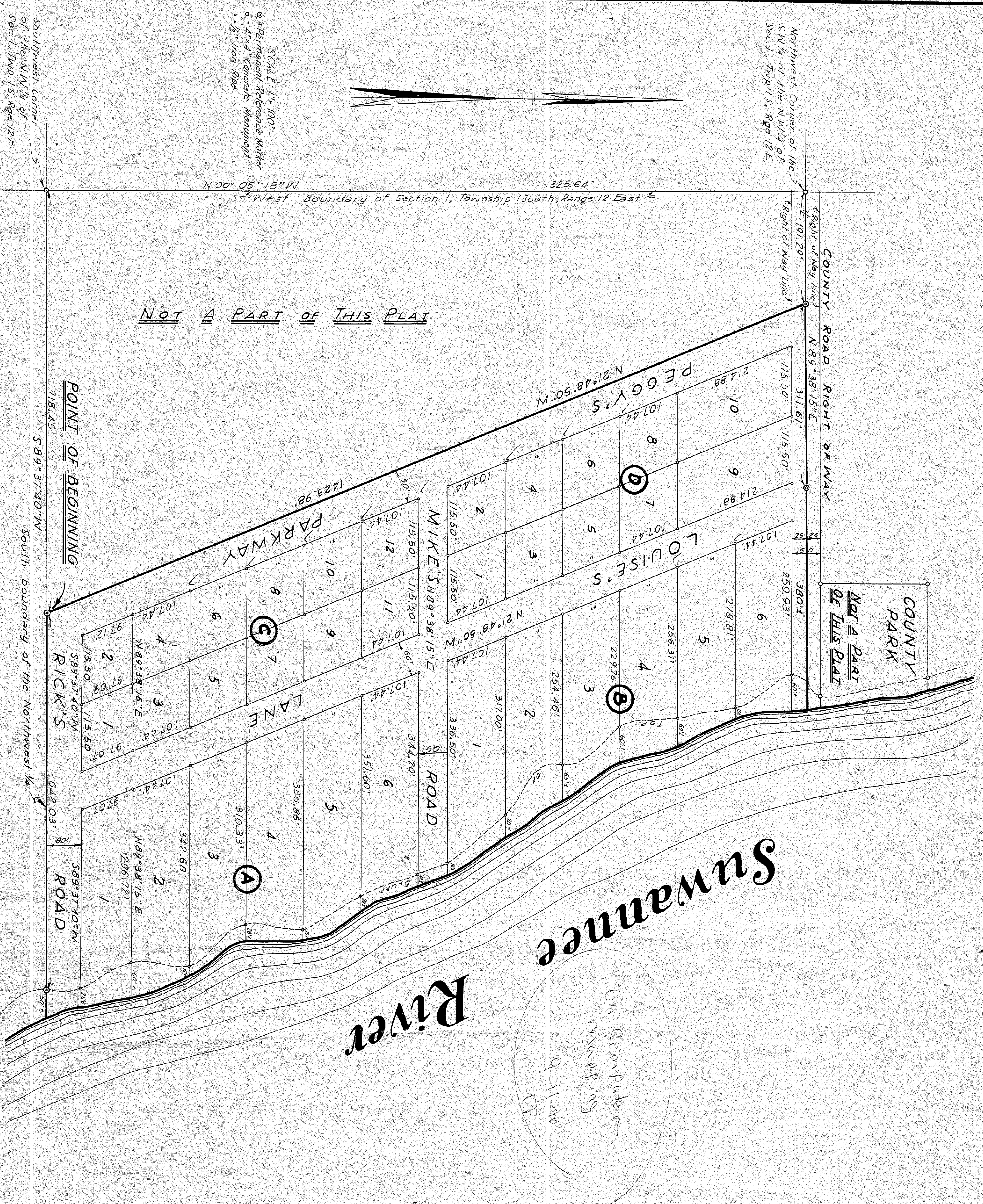


CYPRESS POINT

UNIT No. 1
A SUBDIVISION IN THE
NORTHWEST 1/4 OF SECTION 1, TOWNSHIP 1 SOUTH, RANGE 12 EAST,
SUWANNEE COUNTY, FLORIDA



DESCRIPTION

BEGINNING at a concrete monument in the South boundary of U.S. Government Lot No. 4, (the Northwest 1/4 lying West of the Suwannee River), Section 1, Township 1 South, Range 12 East, Suwannee County, Florida, said monument being situated in said boundary N 89° 37' 40" E a distance of 718.45 feet from a concrete monument, the Southwest corner of the Northwest 1/4 of said Section 1; go thence N 21° 48' 50" W a distance of 1423.98 feet to a concrete monument in the North boundary of the Southwest 1/4 of the Northwest 1/4, bearing N 89° 38' 15" E a distance of 191.29 feet from a concrete monument, the Northwest corner of said Southwest 1/4 of the Northwest 1/4; thence, along and with said North boundary, N 89° 38' 15" E a distance of 692 feet, more or less, to the waters edge of the Suwannee River; thence Southeasterly along and with said waters edge a distance of 1440 feet, more or less, to a point situated N 89° 37' 40" E a distance of 692 feet, more or less, from the POINT OF BEGINNING; thence, departing from said waters edge, along and with the South boundary of said Northwest 1/4, S 89° 37' 40" W a distance of 692 feet, more or less, to the POINT OF BEGINNING, LESS AND EXCEPT the North 25 feet decided to Suwannee County for road right of way.

DEDICATION

We do hereby certify that we are the owners of all lands described and platted hereon and do hereby dedicate to the public forever all streets, roads and ways shown hereon.

Witness Champane Taylor Seal
 Witness Champane Taylor Seal
 Witness Jane E. Melvin Seal
 Witness Andrew T. Fromme Seal

ACKNOWLEDGEMENT

STATE OF FLORIDA
 COUNTY OF DUAL)
 Before me personally appeared J. Champane Taylor and Louise de J. Taylor his wife, and Harry J. Fromme and Peggy R. Fromme, his wife, all to me well known and known to me to be the persons who executed the foregoing instrument, and acknowledge to and before me that they executed said instrument for the purpose therein expressed.
 WITNESS my hand and official seal this 21st day of August, A.D. 1967.

My commission expires
 April 19, 1968
Melvin S. Spangenberg
 Notary Public
 State of Florida of Large

SURVEYOR'S CERTIFICATE

I hereby certify that I have surveyed the lands above described and that this plat is a true and correct representation thereof.

APPROVAL

I do hereby certify that this plat has been examined and approved by the Board of County Commissioners of Suwannee County, Florida, this 5th day of August, A.D. 1967.

Affest: William C. Melvin By William C. Melvin Chairman
 Clerk

RECORDED

I do hereby certify that this plat has been examined by me and found to comply with the requirements of Chapter 177 of the Florida Statutes of 1967 and has been filed for record and recorded in Plat Book 1, Page 127, of the Public Records of Suwannee County, Florida.

Signed: William C. Melvin
 Clerk