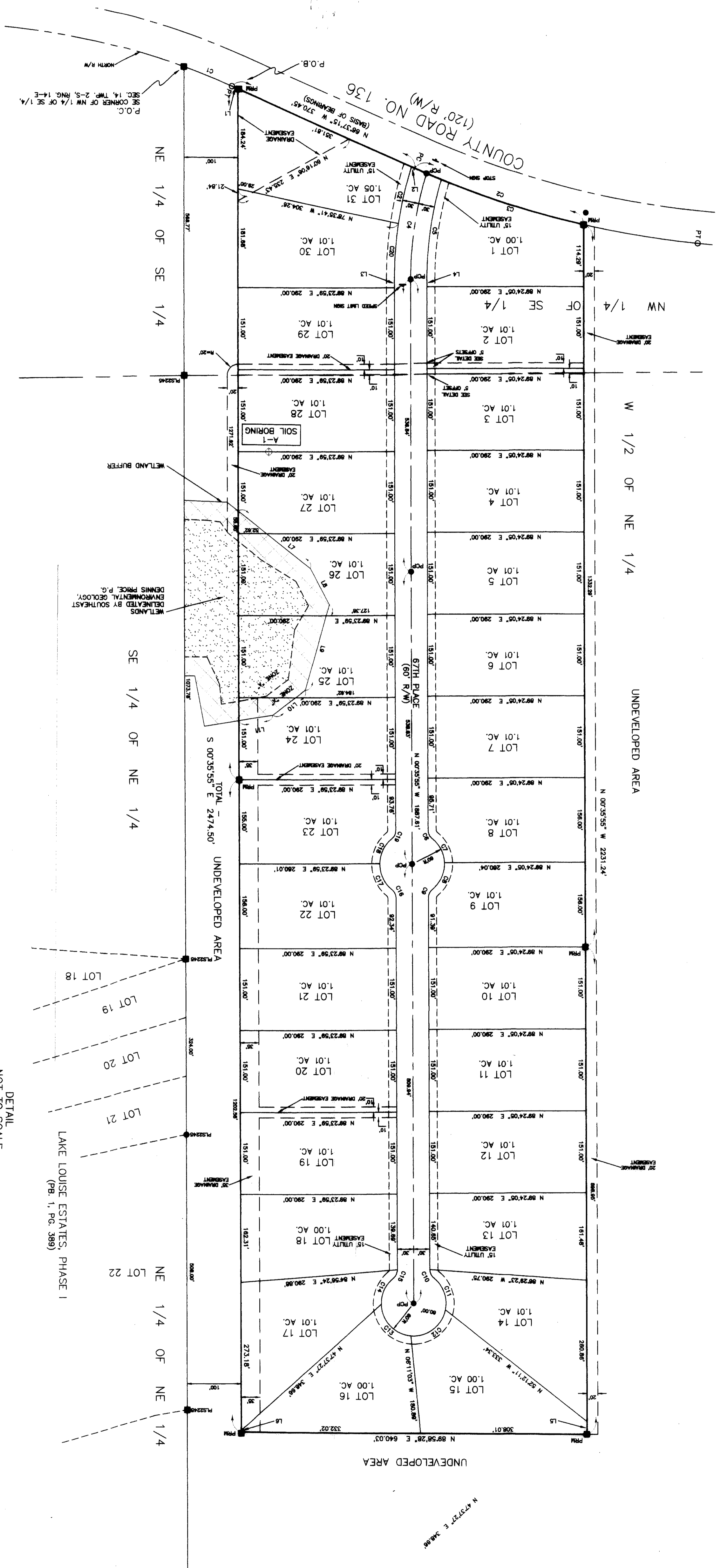


**J. SHERMAN FRIER & ASSOCIATES, INC.**  
LAND SURVEYORS  
CERTIFICATE OF AUTHORIZATION - L.B. # 7170  
400 W. HOWARD STREET, LIVE OAK, FL 32064  
PHONE: 386-362-4629 FAX: 386-362-6270  
EMAIL: jfrier@sherfrier.com or sherfrier@sherfrier.com  
DRAWING NO. 387-10-0020

**DEER LAKE PRESERVE**  
PLANNED RURAL RESIDENTIAL DEVELOPMENT  
SECTION 14, TOWNSHIP 2 SOUTH, RANGE 14 EAST  
SUWANNEE COUNTY, FLORIDA



ABBREVIATIONS

A	AS	ACE	AS
B	BE	BCE	BS
C	CE	CCE	CS
D	DE	DCE	DS
E	E	EE	ES
F	FE	FCE	FS
G	GE	GCE	GS
H	HE	HCE	HS
I	IE	ICE	IS
J	JE	JCE	JS
K	KE	KCE	KS
L	LE	LCE	LS
M	ME	MCE	MS
N	NE	NCE	NS
O	OE	OCE	OS
P	PE	PCE	PS
Q	QE	QCE	QS
R	RE	RCE	RS
S	SE	SCE	SS
T	TE	TCE	TS
U	UE	UCE	US
V	VE	VCE	VS
W	WE	WCE	WS
X	XE	XCE	XS
Y	YE	YCE	YS
Z	ZE	ZCE	ZS

SYMBOLS  
C - CURVE  
M - MONUMENT  
P - POINT  
L - LINE  
R - ROAD  
E - ELEVATION  
B - BENCHMARK  
D - DISTANCE  
A - AREA  
S - SURFACE  
T - TYPICAL  
N - NORTH  
S - SOUTH  
E - EAST  
W - WEST  
C - CENTERLINE  
O - OPEN  
D - DITCH  
F - FENCE  
R - ROAD  
I - IRRIGATION  
L - LINE  
P - POINT  
M - MONUMENT  
C - CURVE  
M - MONUMENT  
P - POINT  
L - LINE  
R - ROAD  
E - ELEVATION  
B - BENCHMARK  
D - DISTANCE  
A - AREA  
S - SURFACE  
T - TYPICAL

CHORD BEARINGS

LINE	BEARING	DISTANCE
C1	N 89°58'28\"	640.03'
C2	N 89°58'28\"	112.00'
C3	N 89°58'28\"	6.50'
C4	N 89°58'28\"	112.00'
C5	N 89°58'28\"	13.47'
C6	N 89°58'28\"	23.81'
C7	N 89°58'28\"	23.81'
C8	N 89°58'28\"	170.10'
C9	N 89°58'28\"	75.35'
C10	N 89°58'28\"	183.86'
C11	N 89°58'28\"	112.00'
C12	N 89°58'28\"	6.50'
C13	N 89°58'28\"	112.00'
C14	N 89°58'28\"	13.47'
C15	N 89°58'28\"	23.81'
C16	N 89°58'28\"	23.81'
C17	N 89°58'28\"	170.10'
C18	N 89°58'28\"	75.35'
C19	N 89°58'28\"	183.86'
C20	N 89°58'28\"	112.00'
C21	N 89°58'28\"	6.50'

CHORD BEARINGS

LINE	BEARING	DISTANCE
C22	N 89°58'28\"	640.03'
C23	N 89°58'28\"	112.00'
C24	N 89°58'28\"	6.50'
C25	N 89°58'28\"	112.00'
C26	N 89°58'28\"	13.47'
C27	N 89°58'28\"	23.81'
C28	N 89°58'28\"	23.81'
C29	N 89°58'28\"	170.10'
C30	N 89°58'28\"	75.35'
C31	N 89°58'28\"	183.86'
C32	N 89°58'28\"	112.00'
C33	N 89°58'28\"	6.50'
C34	N 89°58'28\"	112.00'
C35	N 89°58'28\"	13.47'
C36	N 89°58'28\"	23.81'
C37	N 89°58'28\"	23.81'
C38	N 89°58'28\"	170.10'
C39	N 89°58'28\"	75.35'
C40	N 89°58'28\"	183.86'
C41	N 89°58'28\"	112.00'
C42	N 89°58'28\"	6.50'

SUBDIVIDER:  
DEER LAKE PRESERVE, LLC  
1214 129TH ROAD  
LAKE CITY, FL 32066  
(386) 823-5320

ENGINEER:  
GREGORY G. BAILEY  
P.O. BOX 3823  
LAKE CITY, FL 32056  
(386) 752-4675

SURVEYOR:  
TIMOTHY B. ALCORN  
130 W. HOWARD STREET  
LAKE OAK, FL 32064  
(386) 362-4629

