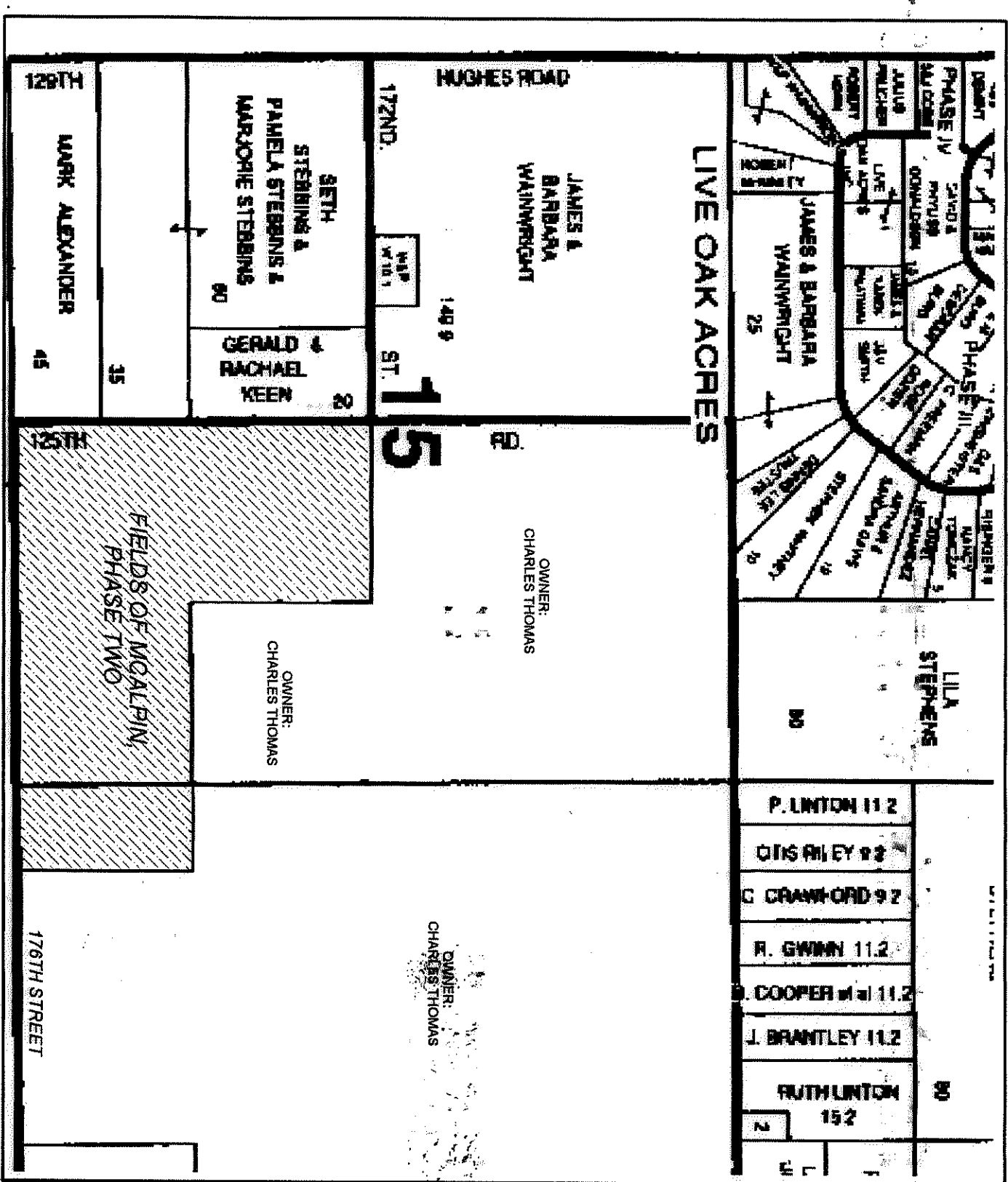
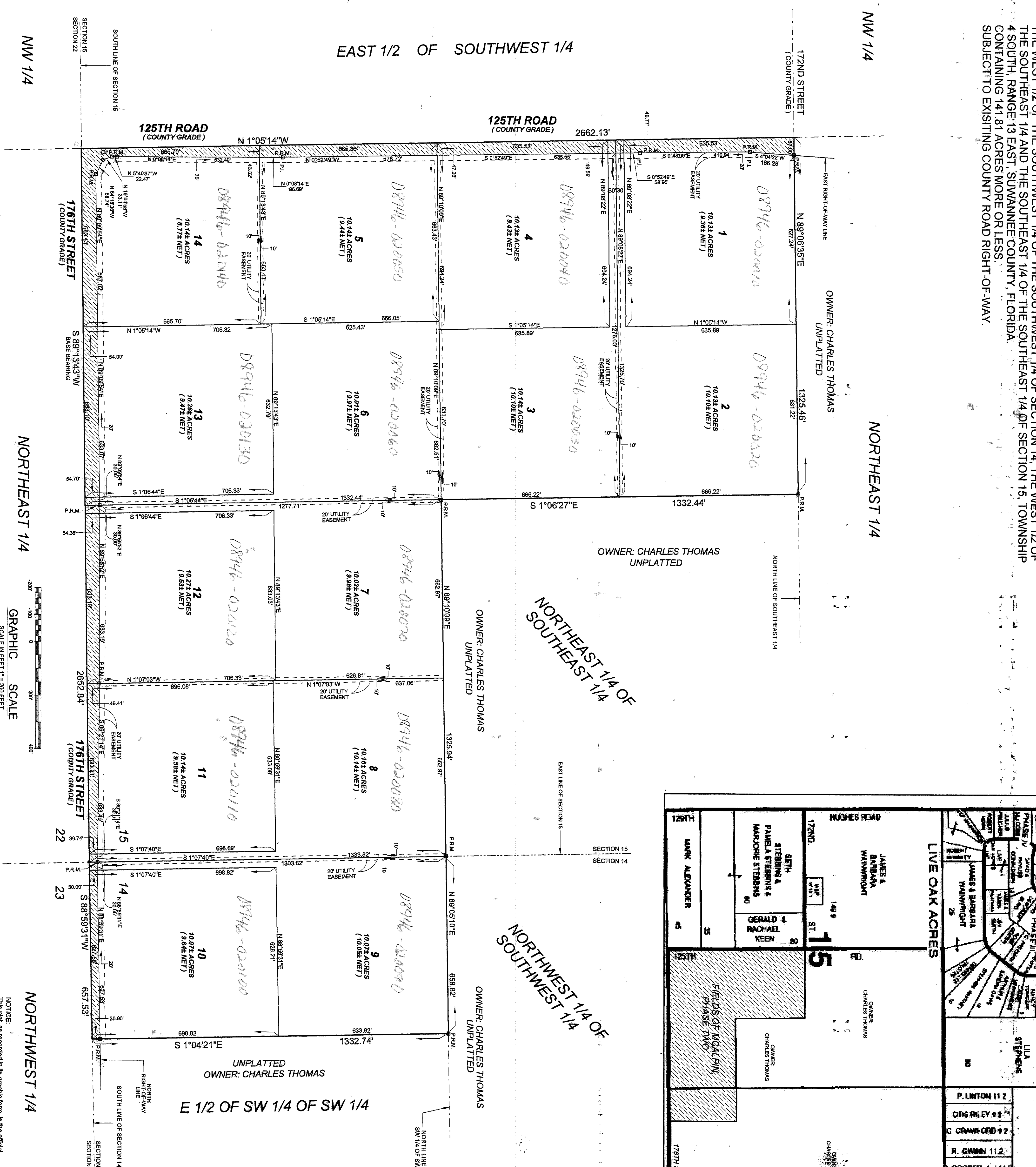


Fields of McAlpin Phase 2

THE WEST 1/2 OF THE SOUTHWEST 1/4 OF THE SOUTHWEST 1/4 OF SECTION 14; THE WEST 1/2 OF THE SOUTHWEST 1/4 AND THE SOUTHWEST 1/4 OF THE SOUTHWEST 1/4 OF SECTION 15; TOWNSHIP 4 SOUTH, RANGE 13 EAST, SUWANNEE COUNTY, FLORIDA. CONTAINING 141.81 ACRES MORE OR LESS. SUBJECT TO EXISTING COUNTY ROAD RIGHT-OF-WAY.

FIELDS OF MCALPIN, PHASE TWO



**ADOPTION AND DEDICATION:**  
 KNOWN ALL MEN BY THESE PRESENTS THAT FIELDS OF MCALPIN, LLC AS OWNER, HAS CAUSED THIS PLAT TO BE LAYED OUT AND THE LOTS THEREON TO BE BOUND BY THE LINES AND CORNERS AND THE WIDTHS AND DEPTHS THEREON AS SHOWN ON THIS PLAT AND THAT THE EASERS STREETS AND EASEMENTS SHOWN ON THIS PLAT ARE HEREBY ADOPTED AND DEDICATED TO THE PUBLIC USE OF THE STATE OF FLORIDA AND THE COUNTY OF SUWANNEE COUNTY, FLORIDA. IN WITNESS WHEREOF, I HAVE HEREBY SIGNED AND SEALED THIS PLAT AND CAUSED THIS PLAT TO BE PUBLICLY READ AND DEDICATED TO THE PUBLIC USE OF THE STATE OF FLORIDA AND THE COUNTY OF SUWANNEE COUNTY, FLORIDA, THIS 20th DAY OF December, A.D. 2007.  
 Charles Thomas  
 PRESIDENT  
 WITNESSES: Tom Lewis

**STATE OF FLORIDA, COUNTY OF SUWANNEE**  
 I HEREBY CERTIFY ON THIS 20th DAY OF December, A.D. 2007, BEFORE ME PERSONALLY APPEARED CHARLES THOMAS, AS MANAGER OF FIELDS OF MCALPIN, LLC TO ME KNOWN TO BE THE INDIVIDUAL DESCRIBED HEREIN AND THAT HE HAS CAUSED THIS PLAT TO BE LAYED OUT AND THE LOTS THEREON TO BE BOUND BY THE LINES AND CORNERS AND THE WIDTHS AND DEPTHS THEREON AS SHOWN ON THIS PLAT AND THAT THE EASERS STREETS AND EASEMENTS SHOWN ON THIS PLAT ARE HEREBY ADOPTED AND DEDICATED TO THE PUBLIC USE OF THE STATE OF FLORIDA AND THE COUNTY OF SUWANNEE COUNTY, FLORIDA. IN WITNESS WHEREOF, I HAVE HEREBY SIGNED AND SEALED THIS PLAT AND CAUSED THIS PLAT TO BE PUBLICLY READ AND DEDICATED TO THE PUBLIC USE OF THE STATE OF FLORIDA AND THE COUNTY OF SUWANNEE COUNTY, FLORIDA, THIS 20th DAY OF December, A.D. 2007.  
 J. Sherman Friar  
 NOTARY PUBLIC, STATE OF FLORIDA  
 MY COMMISSION EXPIRES: June 20, 2007

**DEDICATION OF MORTGAGE:**  
 THIS IS TO CERTIFY THAT FIRST FEDERAL SAVINGS BANK OF FLORIDA, A CORPORATION UNDER THE LAWS OF THE UNITED STATES OF AMERICA, BEING AN APPOINTMENT OF THE LOTS DESCRIBED IN THE FOREGOING PLAT TO BE KNOWN AS THE "FIELDS OF MCALPIN, PHASE TWO" FOR THE USE AND PURPOSES HEREON EXPRESSLY SET FORTH IN THE INSTRUMENT OF MORTGAGE DATED AND RECORDED IN THE PUBLIC RECORDS OF SUWANNEE COUNTY, FLORIDA, HAS CAUSED THIS PLAT TO BE LAYED OUT AND THE LOTS THEREON TO BE BOUND BY THE LINES AND CORNERS AND THE WIDTHS AND DEPTHS THEREON AS SHOWN ON THIS PLAT AND THAT THE EASERS STREETS AND EASEMENTS SHOWN ON THIS PLAT ARE HEREBY ADOPTED AND DEDICATED TO THE PUBLIC USE OF THE STATE OF FLORIDA AND THE COUNTY OF SUWANNEE COUNTY, FLORIDA. IN WITNESS WHEREOF, I HAVE HEREBY SIGNED AND SEALED THIS PLAT AND CAUSED THIS PLAT TO BE PUBLICLY READ AND DEDICATED TO THE PUBLIC USE OF THE STATE OF FLORIDA AND THE COUNTY OF SUWANNEE COUNTY, FLORIDA, THIS 20th DAY OF December, A.D. 2007.  
 Kenneth C. Telford  
 WITNESS: Tom Lewis

**STATE OF FLORIDA, COUNTY OF SUWANNEE**  
 I HEREBY CERTIFY ON THIS 20th DAY OF December, A.D. 2007, BEFORE ME PERSONALLY APPEARED CHARLES THOMAS, AS MANAGER OF FIELDS OF MCALPIN, LLC TO ME KNOWN TO BE THE INDIVIDUAL DESCRIBED HEREIN AND THAT HE HAS CAUSED THIS PLAT TO BE LAYED OUT AND THE LOTS THEREON TO BE BOUND BY THE LINES AND CORNERS AND THE WIDTHS AND DEPTHS THEREON AS SHOWN ON THIS PLAT AND THAT THE EASERS STREETS AND EASEMENTS SHOWN ON THIS PLAT ARE HEREBY ADOPTED AND DEDICATED TO THE PUBLIC USE OF THE STATE OF FLORIDA AND THE COUNTY OF SUWANNEE COUNTY, FLORIDA. IN WITNESS WHEREOF, I HAVE HEREBY SIGNED AND SEALED THIS PLAT AND CAUSED THIS PLAT TO BE PUBLICLY READ AND DEDICATED TO THE PUBLIC USE OF THE STATE OF FLORIDA AND THE COUNTY OF SUWANNEE COUNTY, FLORIDA, THIS 20th DAY OF December, A.D. 2007.  
 J. Sherman Friar  
 NOTARY PUBLIC, STATE OF FLORIDA  
 MY COMMISSION EXPIRES: June 20, 2007

**APPROVED BY BOARD OF COUNTY COMMISSIONERS, SUWANNEE COUNTY, FLORIDA**  
 Date: Feb 13, 2007  
 Charles Thomas  
 J. Sherman Friar  
 M. J. Sullivan  
 DATE: 01-13-07

**CERTIFICATE OF CLERK:**  
 I, CLERK OF SUWANNEE COUNTY, FLORIDA, DO HEREBY CERTIFY THAT THIS PLAT HAS BEEN RECORDED IN THE PUBLIC RECORDS OF SUWANNEE COUNTY, FLORIDA, AND THAT THE EASERS STREETS AND EASEMENTS SHOWN ON THIS PLAT ARE HEREBY ADOPTED AND DEDICATED TO THE PUBLIC USE OF THE STATE OF FLORIDA AND THE COUNTY OF SUWANNEE COUNTY, FLORIDA. IN WITNESS WHEREOF, I HAVE HEREBY SIGNED AND SEALED THIS PLAT AND CAUSED THIS PLAT TO BE PUBLICLY READ AND DEDICATED TO THE PUBLIC USE OF THE STATE OF FLORIDA AND THE COUNTY OF SUWANNEE COUNTY, FLORIDA, THIS 20th DAY OF December, A.D. 2007.  
 J. Sherman Friar  
 CLERK OF SUWANNEE COUNTY, FLORIDA

**LEGEND AND NOTES:**  
 DENOTES LANDS DEDICATED AS ROAD RIGHT-OF-WAY BY THIS PLAT.  
 P.M.A. DENOTES P.M.A. (PERMANENT REFERENCE MONUMENT) SET.  
 S.P.M. DENOTES SURVEY POINT, ROUND, UNLESS NOTED OTHERWISE.  
 1) 20' UTILITY EASEMENT (EXCEPT AS NOTED OTHERWISE).  
 2) EASEMENTS AS SHOWN ON THIS PLAT ARE HEREBY ADOPTED AND DEDICATED TO THE PUBLIC USE OF THE STATE OF FLORIDA AND THE COUNTY OF SUWANNEE COUNTY, FLORIDA.  
 3) FOR SECTION BREAKDOWN, SEE JOB FILE THIS OFFICE.

**NOTICE:**  
 THIS PLAT, AS RECORDED IN THE PUBLIC RECORDS OF SUWANNEE COUNTY, FLORIDA, IS THE OFFICIAL COPY OF THE PLAT AS RECORDED IN THE PUBLIC RECORDS OF SUWANNEE COUNTY, FLORIDA. ANY OTHER COPY OF THIS PLAT IS UNOFFICIAL AND MAY BE INCOMPLETE OR INCORRECT. THE OFFICIAL COPY OF THIS PLAT IS THE COPY RECORDED IN THE PUBLIC RECORDS OF SUWANNEE COUNTY, FLORIDA.  
 THIS PLAT HAS BEEN RECORDED FOR CONFORMANCE WITH THE REQUIREMENTS OF THE FLORIDA PLAT ACT AND THE FLORIDA PLAT RULES AND REGULATIONS.  
 J. SHERMAN FRIAR & ASSOCIATES, INC.  
 130 WEST HOWARD STREET, 2ND FLOOR, SUWANNEE, FLORIDA 32064  
 PHONE: 390-382-4629 FAX: 390-382-5270

**ZONING:**  
 A-1 (AGRICULTURAL 1) - ONE DWELLING UNIT PER ONE ACRE.

**BUILDING PERMIT NOTE:**  
 A BUILDING PERMIT FOR THE CONSTRUCTION OF ANY RESIDENTIAL BUILDING OR STRUCTURE ON THIS PLAT IS REQUIRED BY THE SUWANNEE COUNTY BOARD OF PLANNING AND ZONING. THE PERMITTEE SHALL BE RESPONSIBLE FOR OBTAINING THE NECESSARY PERMITS AND FOR COMPLYING WITH ALL APPLICABLE REGULATIONS AND ORDINANCES. THE PERMITTEE SHALL BE RESPONSIBLE FOR OBTAINING THE NECESSARY PERMITS AND FOR COMPLYING WITH ALL APPLICABLE REGULATIONS AND ORDINANCES.

**SPECIAL NOTE:**  
 NOTICE AND WARNING TO PROSPECTIVE PURCHASERS OF LOTS IN FIELDS OF MCALPIN PHASE TWO: THE PURCHASER OF ANY LOT IN THIS SUBDIVISION SHALL BE RESPONSIBLE FOR OBTAINING THE NECESSARY PERMITS AND FOR COMPLYING WITH ALL APPLICABLE REGULATIONS AND ORDINANCES. THE PURCHASER SHALL BE RESPONSIBLE FOR OBTAINING THE NECESSARY PERMITS AND FOR COMPLYING WITH ALL APPLICABLE REGULATIONS AND ORDINANCES.

**NOTICE:**  
 THE APPROVAL, RESIGNATURE, AND SIGNATURE OF THE REGISTERED PROFESSIONAL ENGINEER, ARCHITECT, SURVEYOR, OR OTHER PROFESSIONAL PERSON ON THIS PLAT SHALL BE VALID ONLY IF THE SIGNATURE IS MADE IN THE PRESENCE OF A NOTARY PUBLIC AND IS RECORDED IN THE PUBLIC RECORDS OF SUWANNEE COUNTY, FLORIDA.

**FLOOD ZONE INFORMATION:**  
 THE PROPERTY IS LOCATED IN FLOOD ZONE V-1 (VEGETATED FLATLANDS). THE FLOOD ZONE INFORMATION IS BASED ON THE FEDERAL FLOOD INSURANCE RATE MAP OF THE FEDERAL EMERGENCY MANAGEMENT AGENCY (FEMA) NO. 22809-0204A.

**UTILITY EASEMENT DETAIL:**  
 ALL UTILITIES SHOWN ON THIS PLAT ARE HEREBY ADOPTED AND DEDICATED TO THE PUBLIC USE OF THE STATE OF FLORIDA AND THE COUNTY OF SUWANNEE COUNTY, FLORIDA.

**GRAPHIC SCALE:**  
 SCALE IN FEET: 1" = 200 FEET