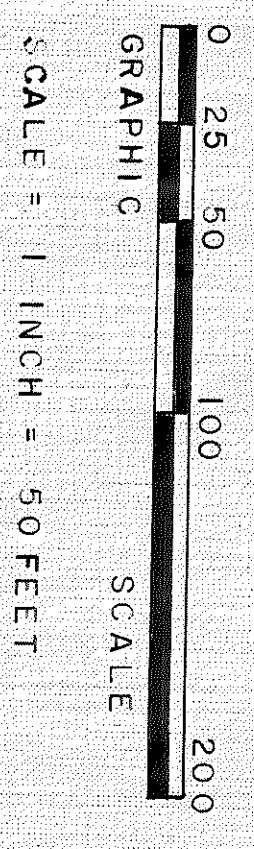
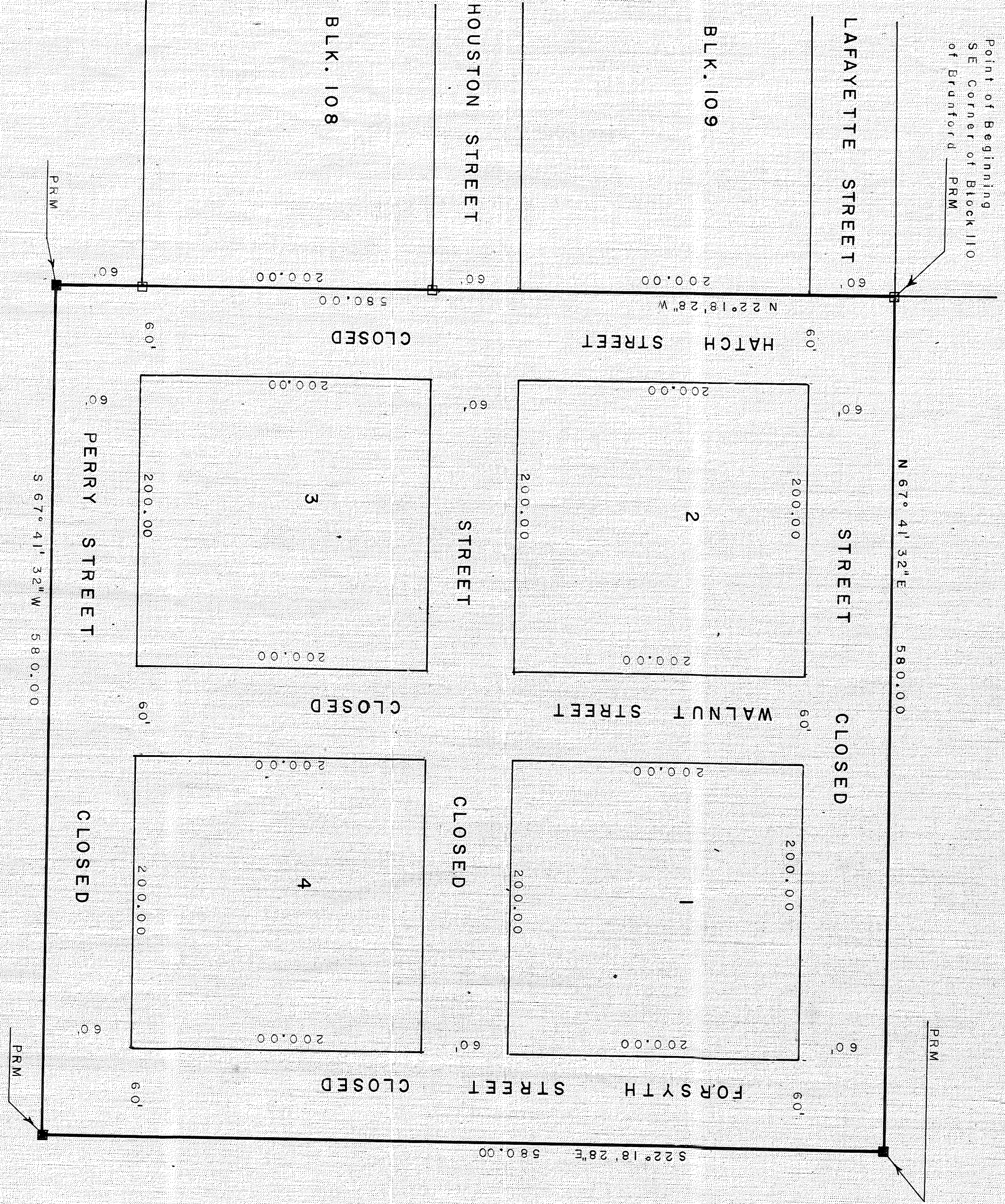


# HATCH PARK

RESUBDIVISION OF BLOCKS 1, 2, 3 & 4, FIRST ADDITION TO THE TOWN OF BRANFORD, FLORIDA AND BEING SITUATED IN THE EAST  $\frac{1}{2}$  OF THE S  $\frac{1}{4}$  OF SECTION 16, T 6 S, R 14 E, SUWANNEE COUNTY, FLORIDA; AND SAID SUBDIVISION BEING FILED IN PLAT BOOK 1, PAGE 116 IN THE PUBLIC RECORDS.

PLAT BOOK 1  
PAGE 116

Point of Beginning  
SE Corner of Block 110  
of Branford PRM



**LEGEND**

Found Concrete Monument   
 Set Concrete Monument   
 Bearings Projected from Plat of   
 Resurvey of the Town of Branford, Fla.   
 Dated Nov., 22, 1957 and Bearings are Grid.

**BOUNDARY DESCRIPTION**

Commence at the Southeast Corner of Block 110 of Branford according to Plat prepared by Mr. H. J. Drew Registered Land Surveyor and dated Nov. 22, 1957, and being a RESURVEY OF THE TOWN OF BRANFORD, FLORIDA; thence N 67° 41' 32" E a distance of 580.00 feet to a concrete monument; thence S 22° 18' 28" E a distance of 580.00 feet to a concrete monument; thence S 67° 41' 32" W a distance of 580.00 ft. to a concrete monument; thence N 22° 18' 28" W a distance of 580.00 ft. to a concrete monument and being the Point of Beginning and all of the above described property being situated in Suwannee County, Florida; and containing 7.72 acres more or less.

**DEDICATION**

THE TOWN OF BRANFORD, FLORIDA a municipal corporation, do hereby certify that we are the owners of the above described property and have caused the same to be platted and hereby dedicate to the public forever to be used as a public park and said subdivision to be known as HATCH PARK and said park being situated in BRANFORD, SUWANNEE COUNTY, FLORIDA.

ATTEST Blanche Quinn  
MAYOR

ATTEST W. J. Drew  
PRESIDENT

ATTEST W. J. Drew  
SECRETARY

STATE OF FLORIDA  
COUNTY OF SUWANNEE

I DO HEREBY CERTIFY that on this day personally appeared before me the representatives of the TOWN OF BRANFORD, FLORIDA a municipal corporation, known to me to be the individuals and they acknowledged the foregoing dedication to be their free and voluntary act witness my hand and seal this 12th day of September 1978 and my commission expires.

**SURVEYOR'S CERTIFICATE**

I HEREBY CERTIFY that this plat is a correct representation of the lands surveyed and described in the title heretofore and said survey was made under my direct supervision and that all PRM'S have been set and all the laws of chapter 177 of the State of Florida have been complied with.

**TOWN ATTORNEY'S APPROVAL**

W. J. Drew  
Registered Professional Land Surveyor  
Date: June 1, 1978  
Suite No. 7, 1731NW 6th St.  
Gainesville, Fla. 32601

I HEREBY APPROVE this plat as to wording of dedication and certification for the Town of Branford, Fla.

**BRANFORD TOWN COUNCIL APPROVAL**

I HEREBY CERTIFY that this plat has been approved and accepted by the Town Council of Branford, Florida.

DATE September 12, 1978  
MAYOR Blanche Quinn  
ATTEST W. J. Drew  
PRESIDENT  
ATTEST W. J. Drew  
SECRETARY

COUNTY CLERK'S APPROVAL  
THIS PLAT HAS BEEN FILED FOR RECORD ON THE PUBLIC RECORDS OF SUWANNEE COUNTY, FLORIDA, THIS 20th DAY OF October 1978 A.D.

CLERK W. J. Drew