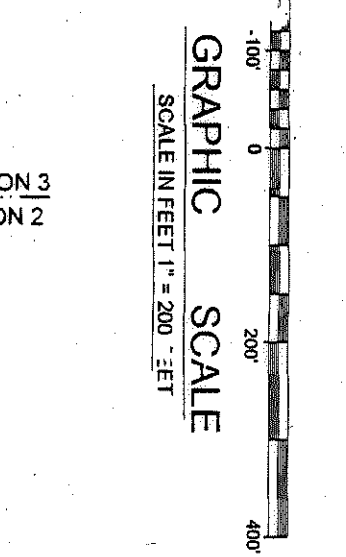
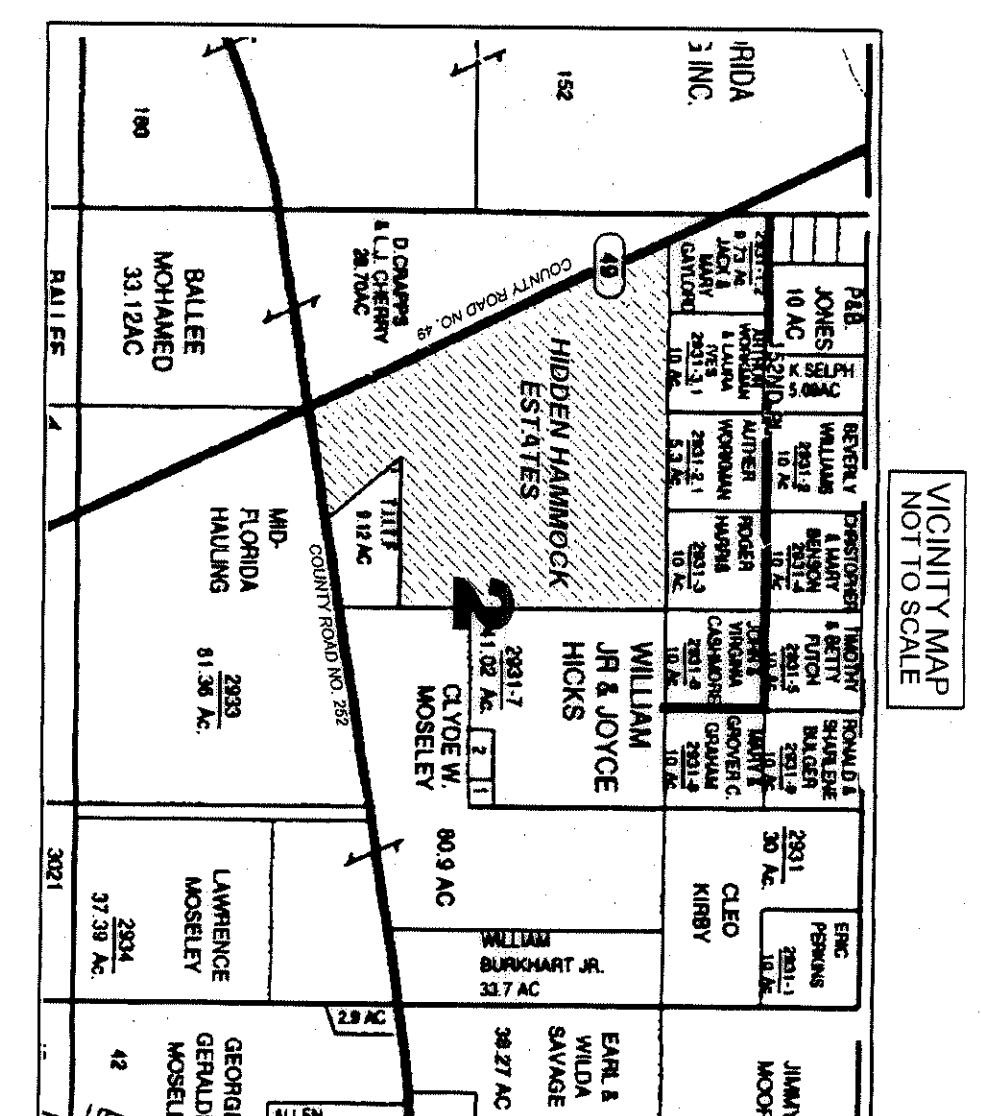
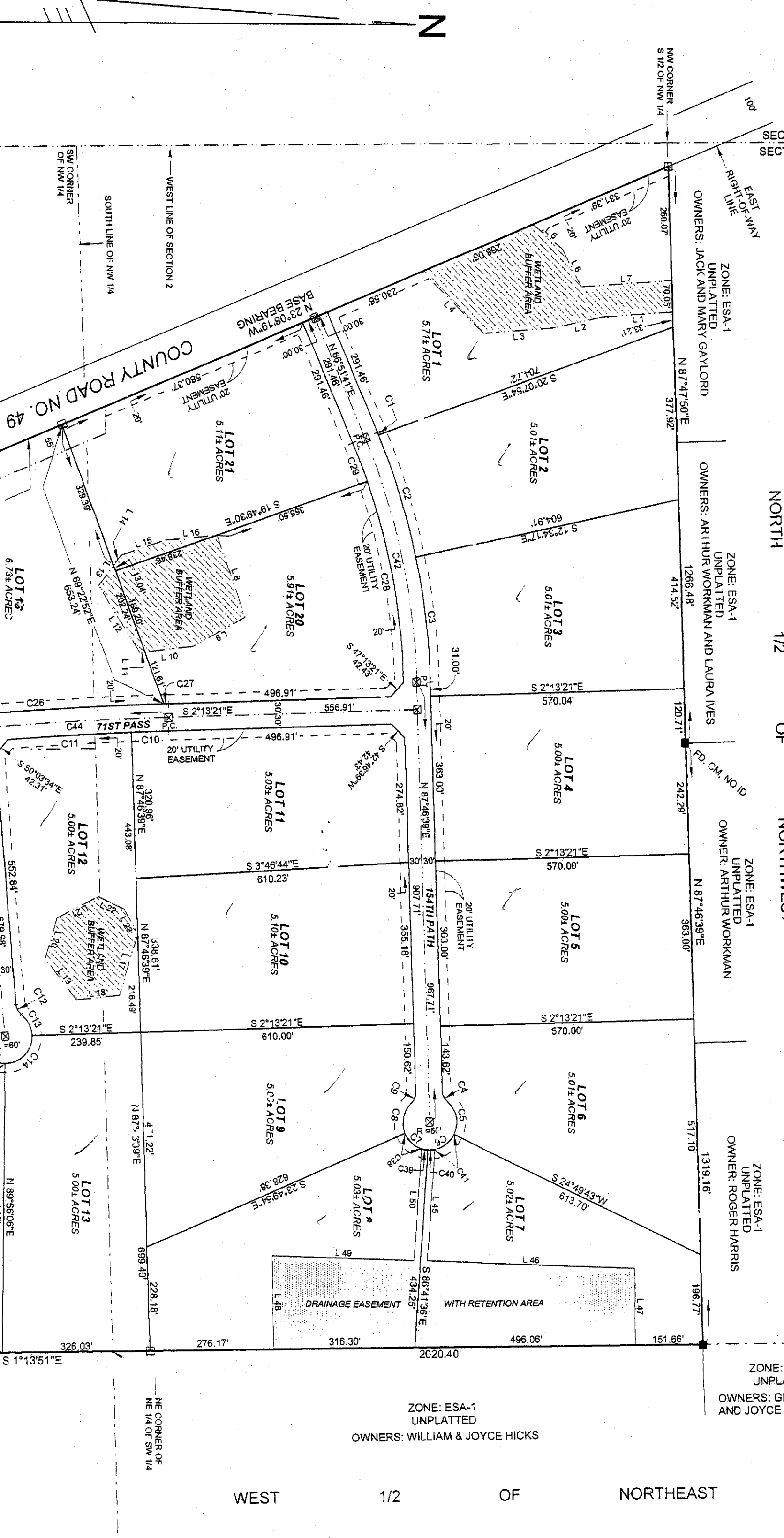


Hidden Hammock Estates



NOTICE: Each plat submitted to the public for record shall contain a graphic scale and north arrow. The applicant shall also be responsible for the construction, installation, maintenance, and operation of any utility easements shown on this plat. The applicant shall be responsible for the construction, installation, maintenance, and operation of any utility easements shown on this plat. The applicant shall be responsible for the construction, installation, maintenance, and operation of any utility easements shown on this plat.

NOTICE: Each plat submitted to the public for record shall contain a graphic scale and north arrow. The applicant shall also be responsible for the construction, installation, maintenance, and operation of any utility easements shown on this plat. The applicant shall be responsible for the construction, installation, maintenance, and operation of any utility easements shown on this plat. The applicant shall be responsible for the construction, installation, maintenance, and operation of any utility easements shown on this plat.



**FLUORIDE INFORMATION:**  
ES-1 ENVIRONMENTALLY SENSITIVE AREA  
NATURE PRESERVE  
WATER COURSE ON SUBJECT PROPERTY EXCEPT AS SHOWN  
ZONING: S-1

**FLOOD ZONE INFORMATION:**  
FLOOD ZONE INFORMATION  
FLOOD ZONE INFORMATION  
FLOOD ZONE INFORMATION

**FINISHED FLOOR CRITERIA:**  
FINISHED FLOOR CRITERIA  
FINISHED FLOOR CRITERIA  
FINISHED FLOOR CRITERIA

**SPECIAL ROAD NOTE:**  
SPECIAL ROAD NOTE  
SPECIAL ROAD NOTE  
SPECIAL ROAD NOTE

**NOTICE:**  
NOTICE  
NOTICE  
NOTICE

**LEASING AND NOTES:**  
LEASING AND NOTES  
LEASING AND NOTES  
LEASING AND NOTES

**PROHIBITED USES WITHIN WETLAND BUFFER AREA:**  
PROHIBITED USES WITHIN WETLAND BUFFER AREA  
PROHIBITED USES WITHIN WETLAND BUFFER AREA  
PROHIBITED USES WITHIN WETLAND BUFFER AREA

**ADoption AND DEDICATION:**  
ADoption AND DEDICATION  
ADoption AND DEDICATION  
ADoption AND DEDICATION

**STATE OF FLORIDA COUNTY OF SUWANNEE**

**CERTIFICATE OF SUBDIVIDERS ENGINEER**  
CERTIFICATE OF SUBDIVIDERS ENGINEER  
CERTIFICATE OF SUBDIVIDERS ENGINEER  
CERTIFICATE OF SUBDIVIDERS ENGINEER

**APPROVED BY BOARD OF COUNTY COMMISSIONERS, SUWANNEE COUNTY, FLORIDA:**  
APPROVED BY BOARD OF COUNTY COMMISSIONERS, SUWANNEE COUNTY, FLORIDA  
APPROVED BY BOARD OF COUNTY COMMISSIONERS, SUWANNEE COUNTY, FLORIDA  
APPROVED BY BOARD OF COUNTY COMMISSIONERS, SUWANNEE COUNTY, FLORIDA

**J. Sherman Friar & Associates, Inc.**  
LAND SURVEYORS  
1930 VESTER DRIVE, SUWANNEE, FLORIDA 32074  
PHONE: 391-5650 FAX: 391-5620