

J. P. Howland's Subdivision

ADOPTION & DEDICATION

This is to certify that we, the undersigned, are the lawful owners of the lands described in the caption hereof, and that we have caused the same to be surveyed and subdivided, and this plat, made in accordance with said survey is hereby adopted as the true and correct plat of said lands, and all streets, roads and other public places shown upon said plat are hereby irrevocably and without reservation, dedicated to the County of Suwannee, State of Florida, and its Successors. In witness whereof we have hereunto set our hands and seals this _____ day of _____ one thousand nine hundred and forty-seven.

Signed in our presence:

W. W. Williams
W. W. Williams

J. P. Howland (Seal)
J. P. Howland (Seal)

State of FLORIDA
 COUNTY OF SUWANNEE

On this day personally appeared before me J. P. Howland and his wife Quintilla B. Howland, to me well known as the persons described in and who executed the foregoing instrument, and severally acknowledged that they executed the same voluntarily for the purpose therein expressed. In witness whereof I have hereunto affixed my hand and official seal at Live Oak, Florida, this 21st day of June 1947.

J. P. Howland Notary Public
 My Commission expires Oct. 17, 1949.

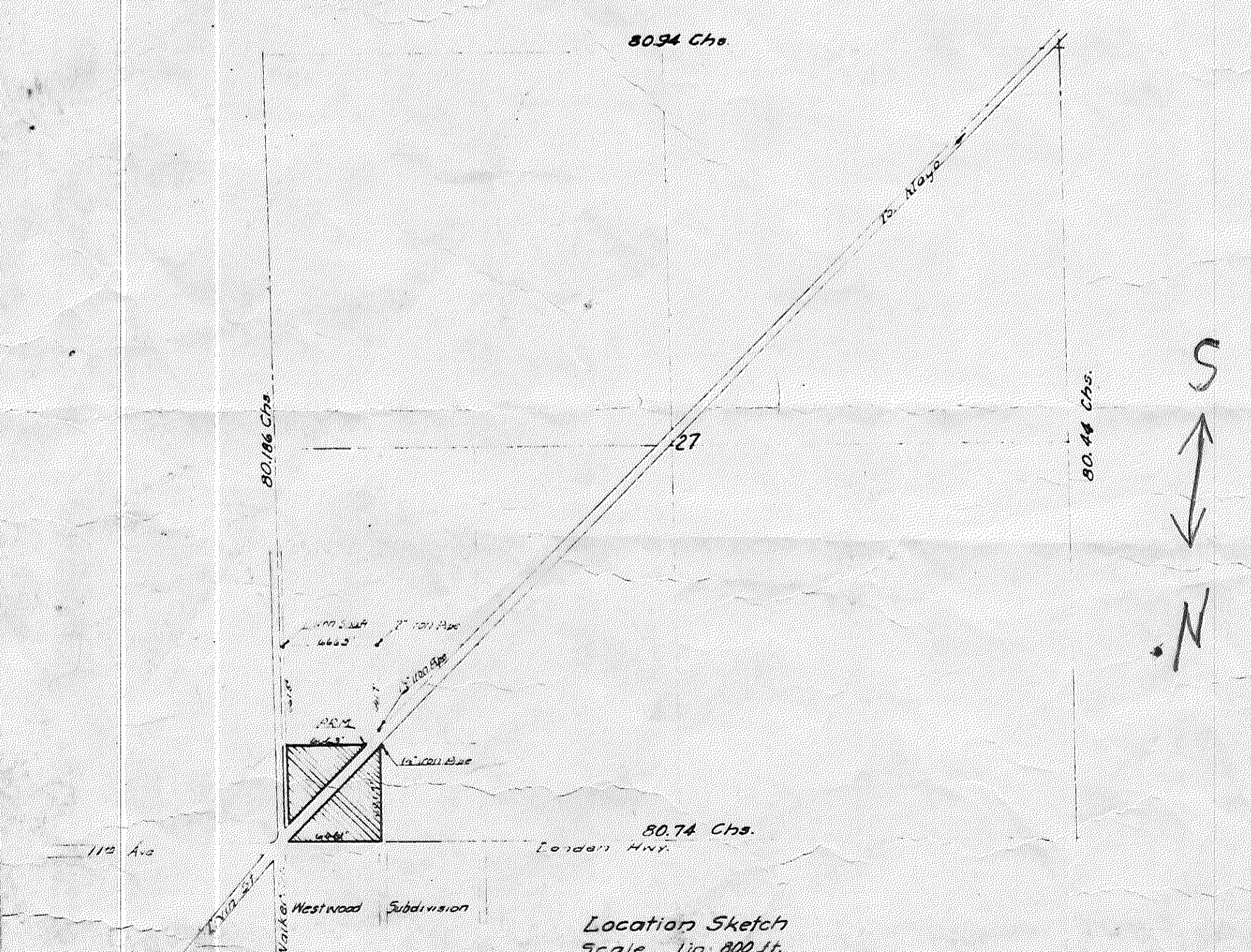
I hereby certify that this PLAT has been examined and approved by the County Commissioners of Suwannee County, Florida, this _____ day of _____ A.D. 1947.

J. L. ... Chairman
 Clerk

I hereby certify that this PLAT has been examined by me and that it complies in form with all requirements of Article 2, Title X, of the Compiled General Laws of Florida, 1927, and it has been filed for record and recorded in plat Book No. _____ at page _____ of the public records of Suwannee County, Florida, this _____ day of _____ A.D. 1947.

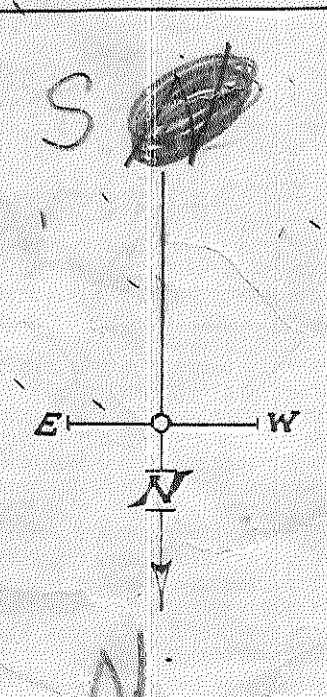
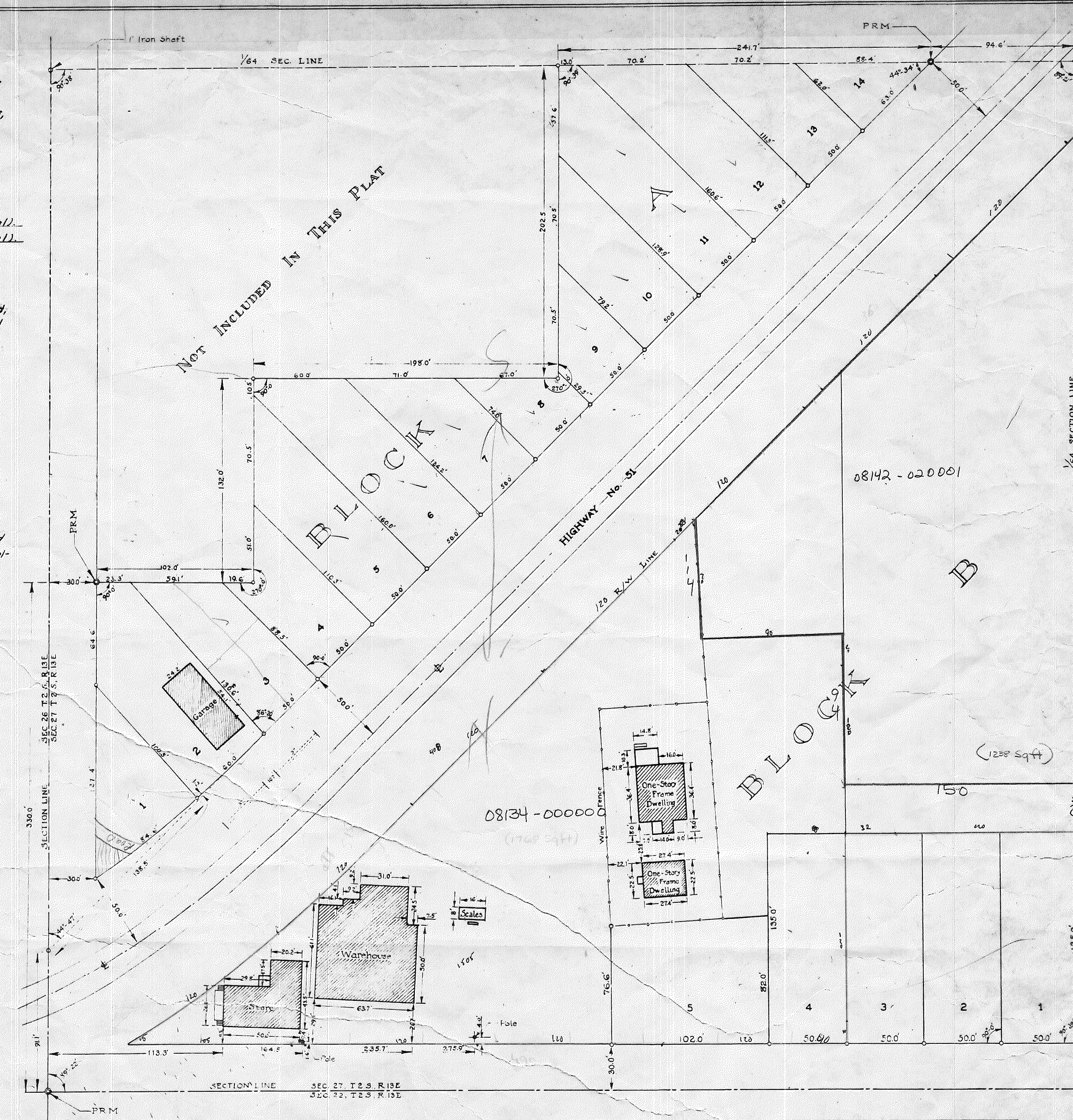
County Clerk.

S
 N



Live Oak, Florida, February 5, 1947
 I hereby certify that the above is a correct representation of the land surveyed and described hereon, and that permanent reference monuments have been placed at the boundary corners as called for under Section 3107 of the compiled General Laws of Florida, 1927; and also that iron pipe stakes have been set at all lot corners indicated hereon.

J. P. Howland
 Surveyor



Note:
 Iron pipe stakes set at the lot corners are indicated thus -o-

PLAT
 of Survey of
J.P. HOWLAND'S SUBDIVISION
 SIX POINTS
 The NE 1/4 of the NE 1/4 of the NE 1/4 of Sec. 27, T. 2 S., R. 13 E.
 LIVE OAK FLORIDA
 Scale 1 in = 40 feet
 February 1947