

Long Horn Acres

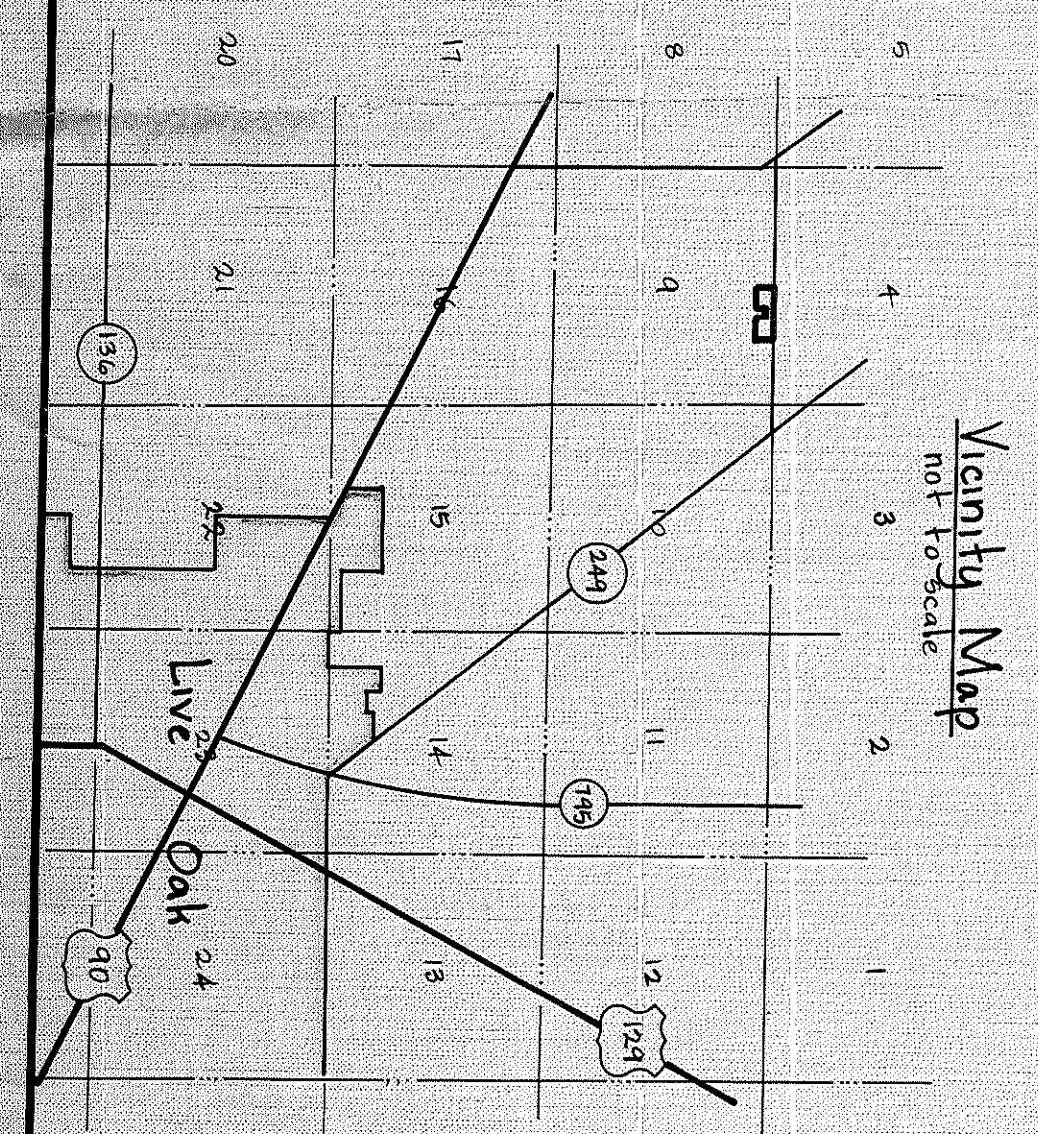
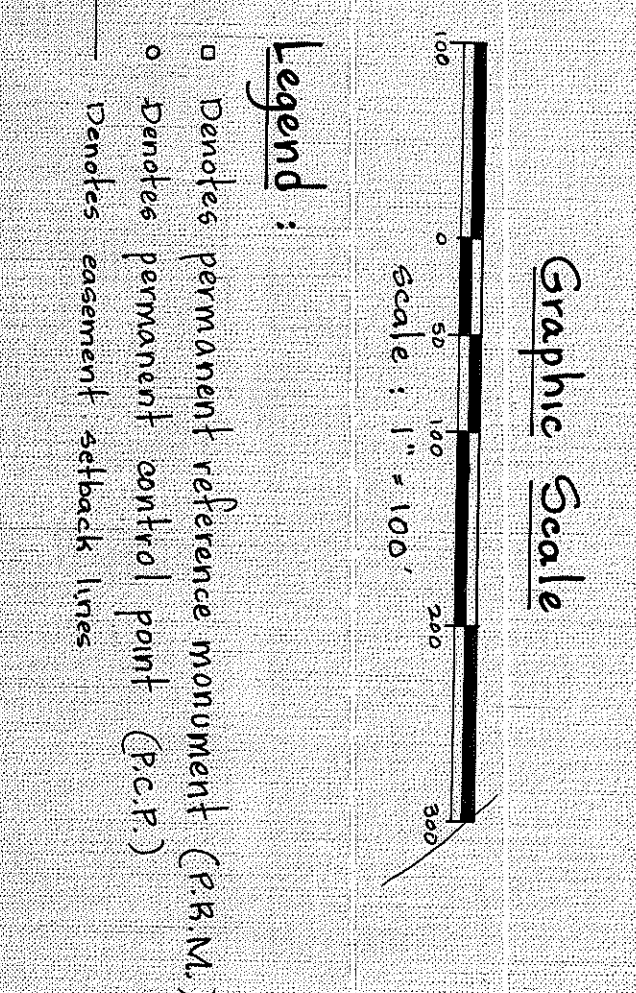
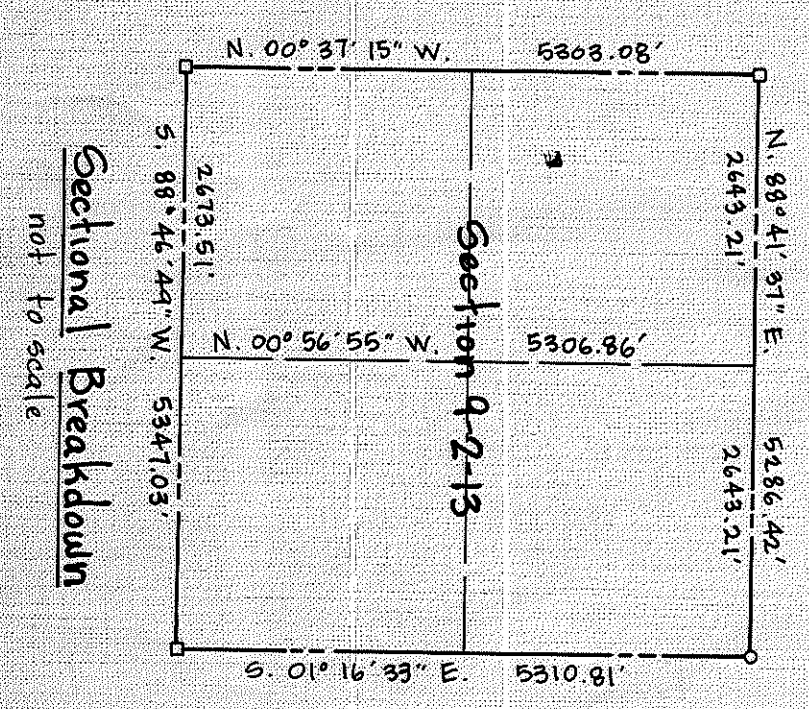
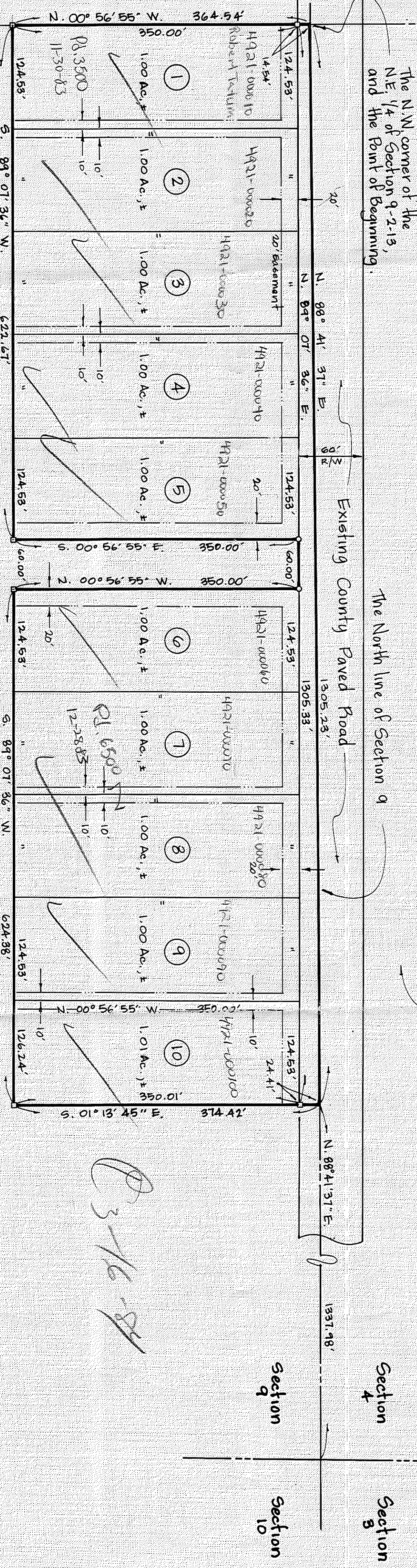
LONG HORN ACRES

PLAT BOOK I PAGE 310

The Northeast 1/4 of Section 9, Township 2 South, Range 13 East, Suwannee County, Florida, and being more particularly described as follows:

Description: Commence at the Northwest corner of the said Northeast 1/4 of Section 9 for a Point of Beginning; from said Point of Beginning run North 88° 41' 37" East along the North line of said Section 9 a distance of 1922.23 feet; thence run South 01° 13' 45" East, a distance of 314.42 feet; thence run North 00° 56' 55" West and parallel to the West line of the said Northeast 1/4, a distance of 920.00 feet; thence run South 89° 07' 30" West, a distance of 60.00 feet; thence run South 00° 56' 55" East and parallel to the said West line of the Northeast 1/4, a distance of 920.00 feet; thence run South 89° 07' 30" West, a distance of 622.67 feet to the said West line, a distance of 324.54 feet to the said Northwest corner of the Northeast 1/4 and the said Point of Beginning.

9-2-13 4921-000010
 4921-000100
 Price of B Sold Lots @ \$2000 Per Acre
 45501478 @ \$1500
 Lots Sold
 #1 1983 \$3975
 NC 20000
 The N.W. corner of the NE 1/4 of Section 9-2-13, and the Point of Beginning.



ADOPTION AND DEDICATION:

I hereby certify that on this 16th day of August, A.D. 1982, before me personally appeared Hugh McKinley Wallace, owner, to me known to be the individual described in and who executed the foregoing dedication and acknowledged execution thereof. Witness my hand and seal at Live Oak, State of Florida, this 16th day of August, A.D. 1982.

Hugh McKinley Wallace
 Hugh McKinley Wallace

STATE OF FLORIDA, COUNTY OF SUWANNEE:

I hereby certify that on this 16th day of August, A.D. 1982, before me personally appeared Hugh McKinley Wallace, owner, to me known to be the individual described in and who executed the foregoing dedication and acknowledged execution thereof. Witness my hand and seal at Live Oak, State of Florida, this 16th day of August, A.D. 1982.

Hugh McKinley Wallace
 Hugh McKinley Wallace

DEDICATION FOR MORTGAGEE:

This is to certify that the First National Bank of Live Oak, a corporation under the laws of the United States of America, being a mortgagee of the lands described in the foregoing caption of this plat do hereby join in and make themselves a party to the dedication of said lands and plat known as Long Horn Acres and easements thereon on this plat to the public.

In witness whereof, the First National Bank of Live Oak has caused these present to be signed by its authorized Vice President and its Vice President-Cashier (Cashier) by and with the authority of its Board of Directors in its name and with its corporate seal affixed this 16th day of August, A.D. 1982.

The First National Bank of Live Oak
[Signature]
 T. E. ABERNETHY, VICE PRESIDENT
 JAMES A. CHIVERS, VICE PRESIDENT

STATE OF FLORIDA, COUNTY OF SUWANNEE:

I hereby certify that on this 27th day of August, A.D. 1982, before me personally appeared T. E. Abernethy, Vice President of the First National Bank of Live Oak, a corporation under the laws of the United States of America, to me well-known to be the person who executed the same freely and voluntarily as the act and deed of said corporation with the official seal of said corporation affixed thereto.

Witness my hand and seal at Live Oak, State of Florida, this 27th day of August, A.D. 1982.

[Signature]
 Notary Public - State of Florida
 My commission expires: _____

APPROVED BY BOARD OF COUNTY COMMISSIONERS SUWANNEE COUNTY, FLORIDA:

Signed: *[Signature]* Chairman Date: 1-1-82
 Signed: *[Signature]* Clerk Date: 1-1-82

CLERK'S CERTIFICATE:

I hereby certify that the foregoing plat, having been duly approved by the Board of County Commissioners of Suwannee County, Florida, was accepted and filed for record in the Public Records of Suwannee County, Florida, in Plat Book I, Page 310 of the Public Records of Suwannee County, Florida.

[Signature]
 Clerk of Circuit Court
 Suwannee County, Florida

SURVEYORS' CERTIFICATE:

I hereby certify that this plat is a true and correct representation of the lands surveyed and shown hereon, that permanent reference monuments (P.R.M.'s) and permanent control points (P.C.P.'s) have been placed as shown, and that the survey data shown complies with the requirements of Chapter 117, Florida Statutes.

[Signature]
 J. Sherman Frier, P.L.S.
 Florida Registered Certificate No.: 2245
 Date: Aug. 16, 1982

Prepared by
J. Sherman Frier & Associates
 Land Surveyors
 P.O. Box 580, Live Oak, Florida, 32060
 Phone: (904) 382-4429