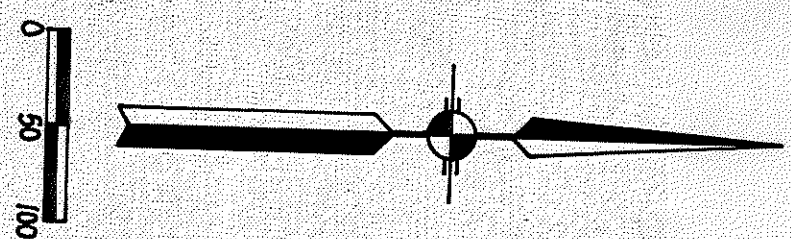
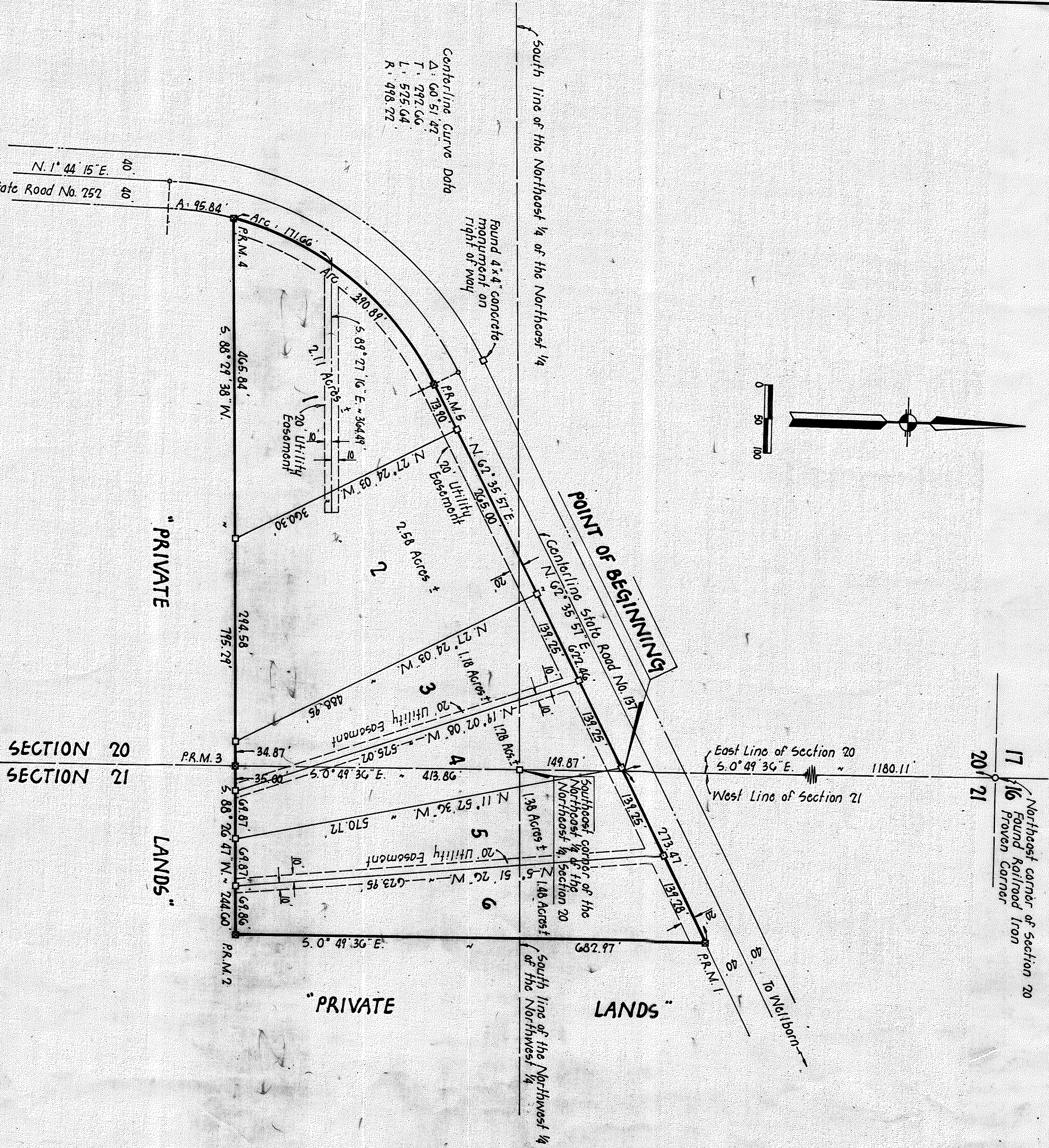


McClellan Woods

PLAT BOOK PAGE 107

McCLELLAN WOODS
IN
SECTIONS 20 & 21, TOWNSHIP 3 SOUTH, RANGE 15 EAST
SUWANNEE COUNTY, FLORIDA



APPROVED BY BOARD OF COUNTY COMMISSIONERS
SUWANNEE COUNTY, FLORIDA

Signed: *John Stapp*, Chairman
Attest: *John Stapp*, Clerk
Date: 6-20-78

CERTIFICATE OF CLERK
I HEREBY CERTIFY that the foregoing plat having been duly approved by the Board of County Commissioners of Suwannee County, Florida was accepted by me and filed for record this 20th day of June, A.D. 1978 in Plat Book Page 107 of the Public Records of Suwannee County, Florida.

[Signature]
CLERK OF THE CIRCUIT COURT
SUWANNEE COUNTY, FLORIDA

DESCRIPTION
That part of the Northeast 1/4 of the Northeast 1/4, Section 20, Township 3 South, Range 15 East, Suwannee County, Florida as lies south and east of State Road No. 137, and that part of the North 1/2 of the Southeast 1/4 of the Southwest 1/4 of the Northeast 1/4, Section 20, Township 3 South, Range 15 East, Suwannee County, Florida as lies south and east of State Road No. 137. Also: That part of the West 244.00 feet of the Northeast 1/4 of the Northeast 1/4, Section 20, Township 3 South, Range 15 East, Suwannee County, Florida as lies south and east of State Road No. 137. COMMENCEMENT of the Northeast corner of Section 20 (Northwest corner of the Southeast 1/4 of the Northeast 1/4 of the Northeast 1/4, Section 20, Township 3 South, Range 15 East, Suwannee County, Florida) line of State Road No. 137, and the POINT of BEGINNING, hence N. 62° 35' 57\"/>

LEGEND
1. 4x4 Concrete Monument (Permanent Reference Monument) with brass cap in top stamped L.L. Lee and Associates Inc. with surveyors registration number, date and monument number.
2. 4x4 concrete monument with brass cap in top stamped L.L. Lee and Associates Inc. with surveyors registration number and date.
3. Boundary based on prior work in this area for Lennil H. Dicks and N.J. Squibb; See traverse books No. 27 and 31; See Plat Filed 8-11-39
4. Bearings based on State Plane Coordinate System and projected from Wallborn Tranquillation Station.

DEDICATION
KNOW ALL MEN BY THESE PRESENTS that PINEMOUNT CORPORATION, a Florida Corporation has caused the lands herein described to be surveyed, subdivided and platted to be known as "McCLELLAN WOODS" and that all streets, roads and easements as shown are hereby dedicated to the perpetual use of the public for proper uses and purposes herein stated.
IN WITNESS WHEREOF "PINEMOUNT CORPORATION" has caused these presents to be executed in their respective names and by their duly authorized officers with their seals affixed hereto.
Signed, sealed and delivered in the presence of:

[Signature] WITNESS
[Signature] WITNESS
BY: *[Signature]*
LENNIL H. DICKS, President
ATTEST: *[Signature]*
JULIA R. DICKS, Secretary

ACKNOWLEDGEMENT
STATE OF FLORIDA
COUNTY OF COLUMBIA
I HEREBY CERTIFY that on this 15th day of May, A.D. 1978, before me personally appeared LENNIL H. DICKS and JULIA R. DICKS, President and Secretary respectively of "PINEMOUNT CORPORATION", a Florida Corporation, to me known to be the individuals and officers described in the foregoing dedication and they acknowledged that they executed the same for the purposes therein expressed.
WITNESS my hand and official seal of Columbia County, State of Florida, this 15th day of May, 1978.

Signed: *[Signature]*
NOTARY PUBLIC STATE OF FLORIDA
My Commission expires Aug 2, 1981

COUNTY ATTORNEYS CERTIFICATE
I HEREBY CERTIFY that I have examined the foregoing plat and that it complies in form with the requirements of Chapter 177, Florida Statutes.

SIGNED: *[Signature]*
LENNIE L. LEE, P.L.S.
FLA. REG. CERT. NO. 1950
DATE: 4-19-1978

ONE