

PARCEL # 021981-00001 Then 000046

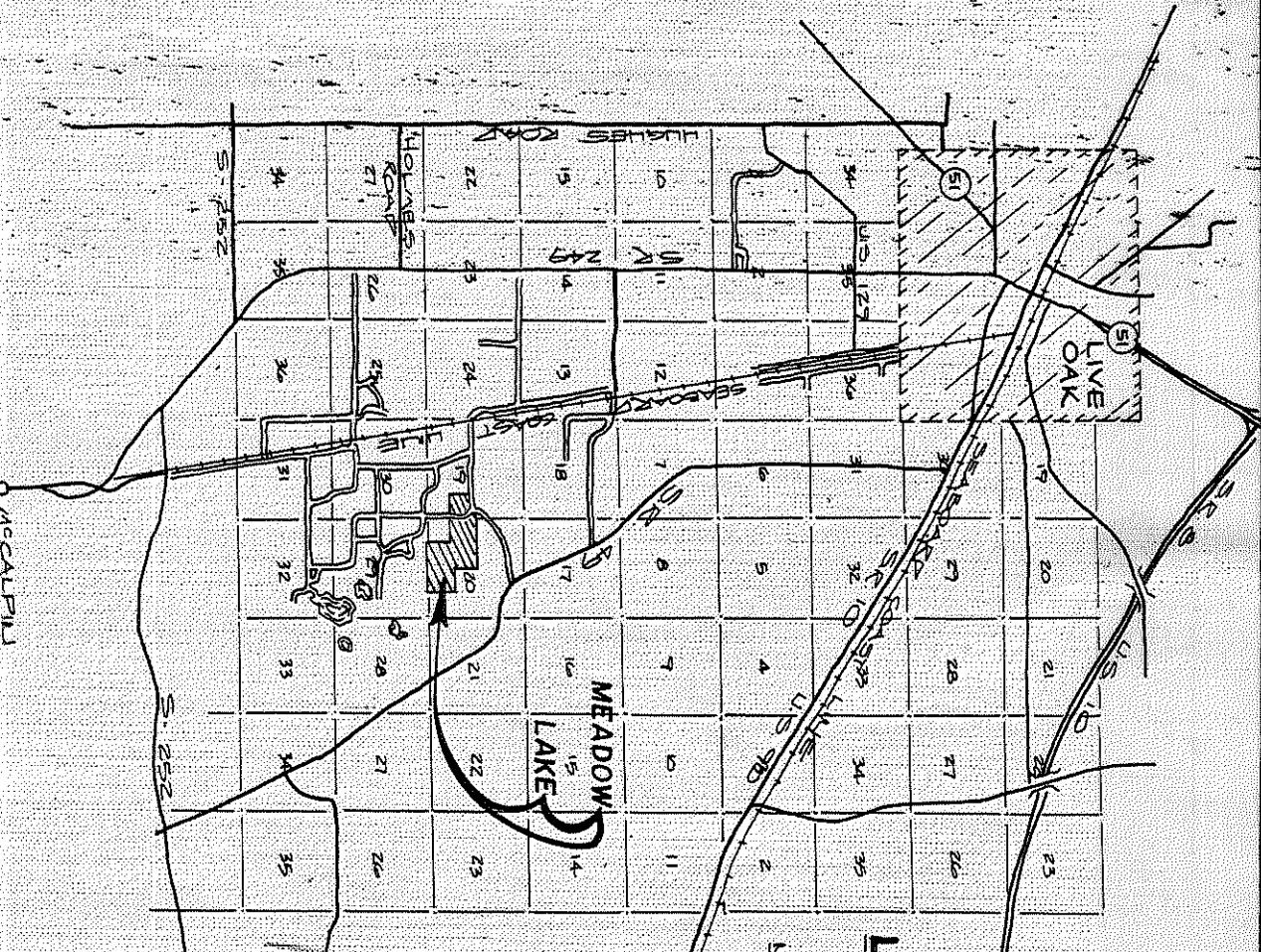
OB 1982 @ UNSOLD \$1,000

GOLD \$1,500 Ac

MEADOW LAKE

A SUBDIVISION IN SECTIONS 19 & 20
TOWNSHIP 3 SOUTH, RANGE 14 EAST,
SUWANNEE COUNTY, FLORIDA.

6/12-82
CAROL F. GIEBELG



LOCATION MAP
SCALE

LEGAL DESCRIPTION
A CERTAIN PART OF SECTIONS 19 & 20 TOWNSHIP 3 SOUTH, RANGE 14 EAST, SUWANNEE COUNTY, FLORIDA, BEING MORE PARTICULARLY DESCRIBED AS FOLLOWS: THE N1/2 OF THE SW1/4, THE SW1/4 OF THE SW1/4, LESS THE SOUTH 200 FEET OF THE EAST 325 FEET OF THE WEST 650.33 FEET, ALL LYING AND BEING IN SECTION 20, TOWNSHIP 3 SOUTH, RANGE 14 EAST AND THE N1/2 OF THE SW1/4 OF SECTION 19, TOWNSHIP 3 SOUTH, RANGE 14 EAST.

ADOPTION AND REPLICATION
I, CAROL F. GIEBELG, DO HEREBY CERTIFY THAT THEY ARE THE OWNERS OF THE HEREIN DESCRIBED PROPERTY AND DO HEREBY REPLICATE TO THE PUBLIC FOREVER THE STREETS AND CASEWAYS SHOWN ON THIS PLAN OF MEADOW LAKE.

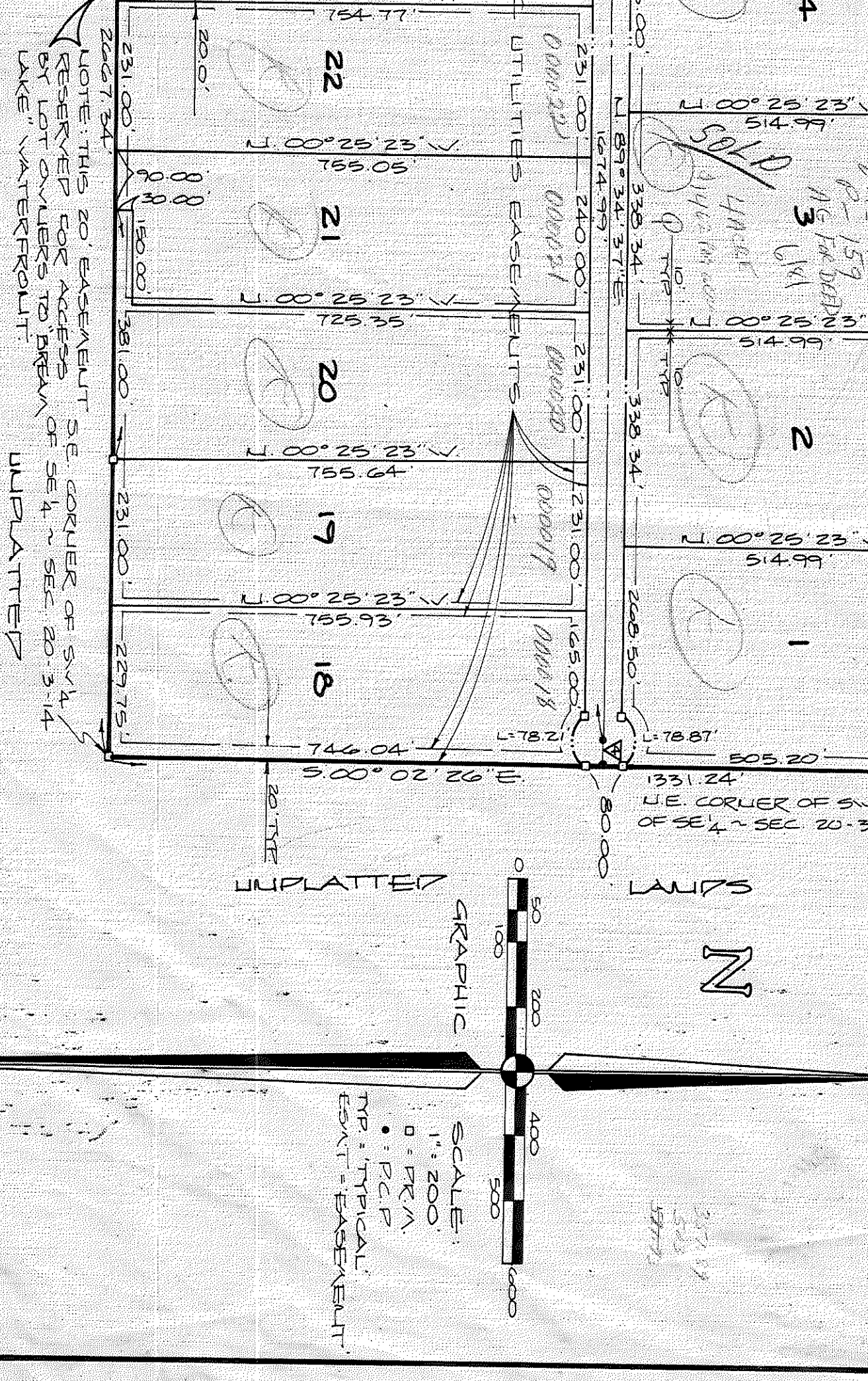
PETER V. GIEBELG
CAROL F. GIEBELG

WITNESSES
WITNESS
WITNESS
WITNESS

LOT	DELTA	RADIUS	TANGENT	CHORD BEARING AND DISTANCE
1	90° 22' 53"	50.00	18.87	U 07° 58' 15" V 109.93
2	90° 22' 53"	50.00	18.87	U 07° 58' 15" V 109.93
3	90° 22' 53"	50.00	18.87	U 07° 58' 15" V 109.93
4	90° 22' 53"	50.00	18.87	U 07° 58' 15" V 109.93
5	90° 22' 53"	50.00	18.87	U 07° 58' 15" V 109.93
6	90° 22' 53"	50.00	18.87	U 07° 58' 15" V 109.93
7	90° 22' 53"	50.00	18.87	U 07° 58' 15" V 109.93
8	90° 22' 53"	50.00	18.87	U 07° 58' 15" V 109.93
9	90° 22' 53"	50.00	18.87	U 07° 58' 15" V 109.93
10	90° 22' 53"	50.00	18.87	U 07° 58' 15" V 109.93
11	90° 22' 53"	50.00	18.87	U 07° 58' 15" V 109.93
12	90° 22' 53"	50.00	18.87	U 07° 58' 15" V 109.93
13	90° 22' 53"	50.00	18.87	U 07° 58' 15" V 109.93
14	90° 22' 53"	50.00	18.87	U 07° 58' 15" V 109.93
15	90° 22' 53"	50.00	18.87	U 07° 58' 15" V 109.93
16	90° 22' 53"	50.00	18.87	U 07° 58' 15" V 109.93
17	90° 22' 53"	50.00	18.87	U 07° 58' 15" V 109.93
18	90° 22' 53"	50.00	18.87	U 07° 58' 15" V 109.93
19	90° 22' 53"	50.00	18.87	U 07° 58' 15" V 109.93
20	90° 22' 53"	50.00	18.87	U 07° 58' 15" V 109.93
21	90° 22' 53"	50.00	18.87	U 07° 58' 15" V 109.93
22	90° 22' 53"	50.00	18.87	U 07° 58' 15" V 109.93
23	90° 22' 53"	50.00	18.87	U 07° 58' 15" V 109.93
24	90° 22' 53"	50.00	18.87	U 07° 58' 15" V 109.93
25	90° 22' 53"	50.00	18.87	U 07° 58' 15" V 109.93
26	90° 22' 53"	50.00	18.87	U 07° 58' 15" V 109.93
27	90° 22' 53"	50.00	18.87	U 07° 58' 15" V 109.93
28	90° 22' 53"	50.00	18.87	U 07° 58' 15" V 109.93
29	90° 22' 53"	50.00	18.87	U 07° 58' 15" V 109.93
30	90° 22' 53"	50.00	18.87	U 07° 58' 15" V 109.93
31	90° 22' 53"	50.00	18.87	U 07° 58' 15" V 109.93
32	90° 22' 53"	50.00	18.87	U 07° 58' 15" V 109.93
33	90° 22' 53"	50.00	18.87	U 07° 58' 15" V 109.93
34	90° 22' 53"	50.00	18.87	U 07° 58' 15" V 109.93
35	90° 22' 53"	50.00	18.87	U 07° 58' 15" V 109.93
36	90° 22' 53"	50.00	18.87	U 07° 58' 15" V 109.93
37	90° 22' 53"	50.00	18.87	U 07° 58' 15" V 109.93
38	90° 22' 53"	50.00	18.87	U 07° 58' 15" V 109.93
39	90° 22' 53"	50.00	18.87	U 07° 58' 15" V 109.93
40	90° 22' 53"	50.00	18.87	U 07° 58' 15" V 109.93
41	90° 22' 53"	50.00	18.87	U 07° 58' 15" V 109.93
42	90° 22' 53"	50.00	18.87	U 07° 58' 15" V 109.93
43	90° 22' 53"	50.00	18.87	U 07° 58' 15" V 109.93
44	90° 22' 53"	50.00	18.87	U 07° 58' 15" V 109.93
45	90° 22' 53"	50.00	18.87	U 07° 58' 15" V 109.93
46	90° 22' 53"	50.00	18.87	U 07° 58' 15" V 109.93

DELTA	RADIUS	TANGENT	CHORD BEARING AND DISTANCE
0	90° 22' 53"	50.00	U 07° 58' 15" V 109.93
A	90° 22' 53"	50.00	U 07° 58' 15" V 109.93
B	90° 22' 53"	50.00	U 07° 58' 15" V 109.93
C	90° 22' 53"	50.00	U 07° 58' 15" V 109.93
D	90° 22' 53"	50.00	U 07° 58' 15" V 109.93
E	90° 22' 53"	50.00	U 07° 58' 15" V 109.93
F	90° 22' 53"	50.00	U 07° 58' 15" V 109.93

DELTA	RADIUS	TANGENT	CHORD BEARING AND DISTANCE
1	90° 22' 53"	50.00	U 07° 58' 15" V 109.93
2	90° 22' 53"	50.00	U 07° 58' 15" V 109.93
3	90° 22' 53"	50.00	U 07° 58' 15" V 109.93
4	90° 22' 53"	50.00	U 07° 58' 15" V 109.93



ACKNOWLEDGEMENT
STATE OF FLORIDA, COUNTY OF SUWANNEE
THE FOREGOING INSTRUMENT WAS ACKNOWLEDGED BEFORE ME THIS 21ST DAY OF FEBRUARY, A.D. 1980 BY CAROL F. GIEBELG, VICE PRESIDENT AND PATRICIA A. ADOL, ASSISTANT CASHIER OF THE FIRST NATIONAL BANK OF LAKE CITY, ON BEHALF OF THE BANK. WITNESS MY HAND AND OFFICIAL SEAL THIS 21ST DAY OF FEB. A.D. 1980.

SURVEYOR'S CERTIFICATE
I, CAROL F. GIEBELG, DO HEREBY CERTIFY THAT THIS PLAN OF MEADOW LAKE IS A TRUE AND CORRECT REPLICATION OF THE HEREIN DESCRIBED PROPERTY ACCORDING TO A SURVEY MADE UNDER MY PERSONAL SUPERVISION AND SUPERVISORY CONTROL THAT RELEVANT RECORDS AND INSTRUMENTS (CRK, A/S) AND RELEVANT CONTROL POINTS (C.P.'S) HAVE BEEN SET AS CALLED FOR UNDER CHAPTER 177, SECTION 01(1)(4) LAWS OF FLORIDA AND THAT THE SURVEY DATA COMBINES WITH ALL THE REQUIREMENTS OF CHAPTER 177 (FS) 17B.

Carol F. Giebelg
REG. P.L.A. SURVEYOR No. 1624
SUWANNEE COUNTY COMMISSIONER'S APPEAL
DATE: 2/26/80

SUWANNEE COUNTY CLERK'S FILING CERTIFICATE
THIS PLAN HAS BEEN FILED FOR RECORD AND RECORDED IN THE PUBLIC RECORDS OF SUWANNEE COUNTY, FLORIDA THIS 21ST DAY OF FEB. A.D. 1980.

CLERK
REG. P.L.A. SURVEYOR No. 1624
SUWANNEE COUNTY COMMISSIONER'S APPEAL
DATE: 2/26/80

ACKNOWLEDGEMENT
STATE OF FLORIDA, COUNTY OF SUWANNEE
THE FOREGOING INSTRUMENT WAS ACKNOWLEDGED BEFORE ME THIS 21ST DAY OF FEBRUARY, A.D. 1980 BY CAROL F. GIEBELG, VICE PRESIDENT AND PATRICIA A. ADOL, ASSISTANT CASHIER OF THE FIRST NATIONAL BANK OF LAKE CITY, ON BEHALF OF THE BANK. WITNESS MY HAND AND OFFICIAL SEAL THIS 21ST DAY OF FEB. A.D. 1980.

SURVEYOR'S CERTIFICATE
I, CAROL F. GIEBELG, DO HEREBY CERTIFY THAT THIS PLAN OF MEADOW LAKE IS A TRUE AND CORRECT REPLICATION OF THE HEREIN DESCRIBED PROPERTY ACCORDING TO A SURVEY MADE UNDER MY PERSONAL SUPERVISION AND SUPERVISORY CONTROL THAT RELEVANT RECORDS AND INSTRUMENTS (CRK, A/S) AND RELEVANT CONTROL POINTS (C.P.'S) HAVE BEEN SET AS CALLED FOR UNDER CHAPTER 177, SECTION 01(1)(4) LAWS OF FLORIDA AND THAT THE SURVEY DATA COMBINES WITH ALL THE REQUIREMENTS OF CHAPTER 177 (FS) 17B.

Carol F. Giebelg
REG. P.L.A. SURVEYOR No. 1624
SUWANNEE COUNTY COMMISSIONER'S APPEAL
DATE: 2/26/80

SUWANNEE COUNTY CLERK'S FILING CERTIFICATE
THIS PLAN HAS BEEN FILED FOR RECORD AND RECORDED IN THE PUBLIC RECORDS OF SUWANNEE COUNTY, FLORIDA THIS 21ST DAY OF FEB. A.D. 1980.

CLERK
REG. P.L.A. SURVEYOR No. 1624
SUWANNEE COUNTY COMMISSIONER'S APPEAL
DATE: 2/26/80