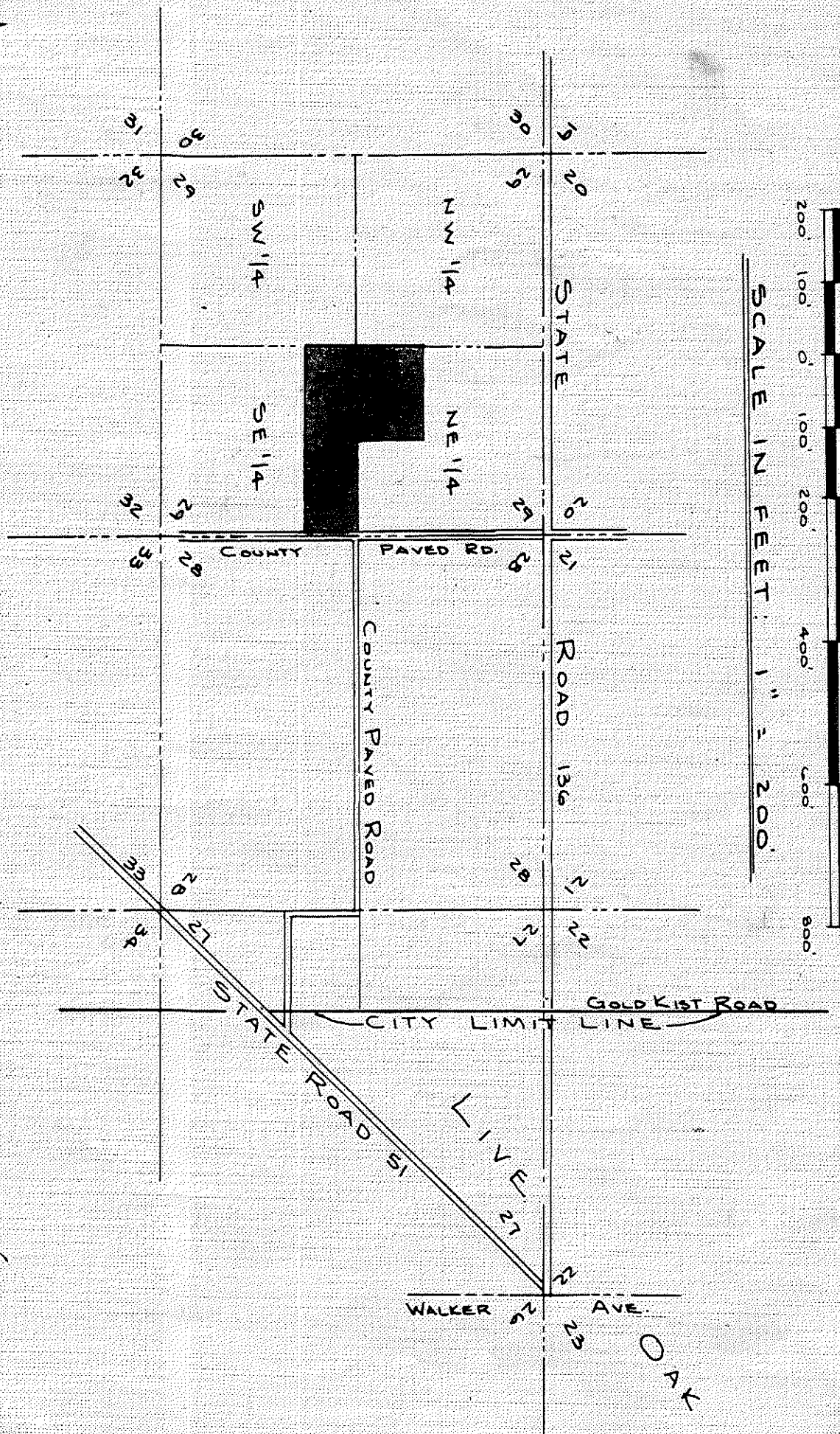
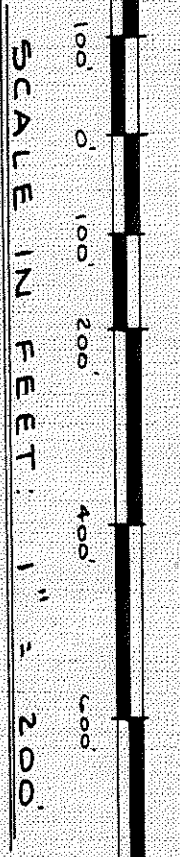


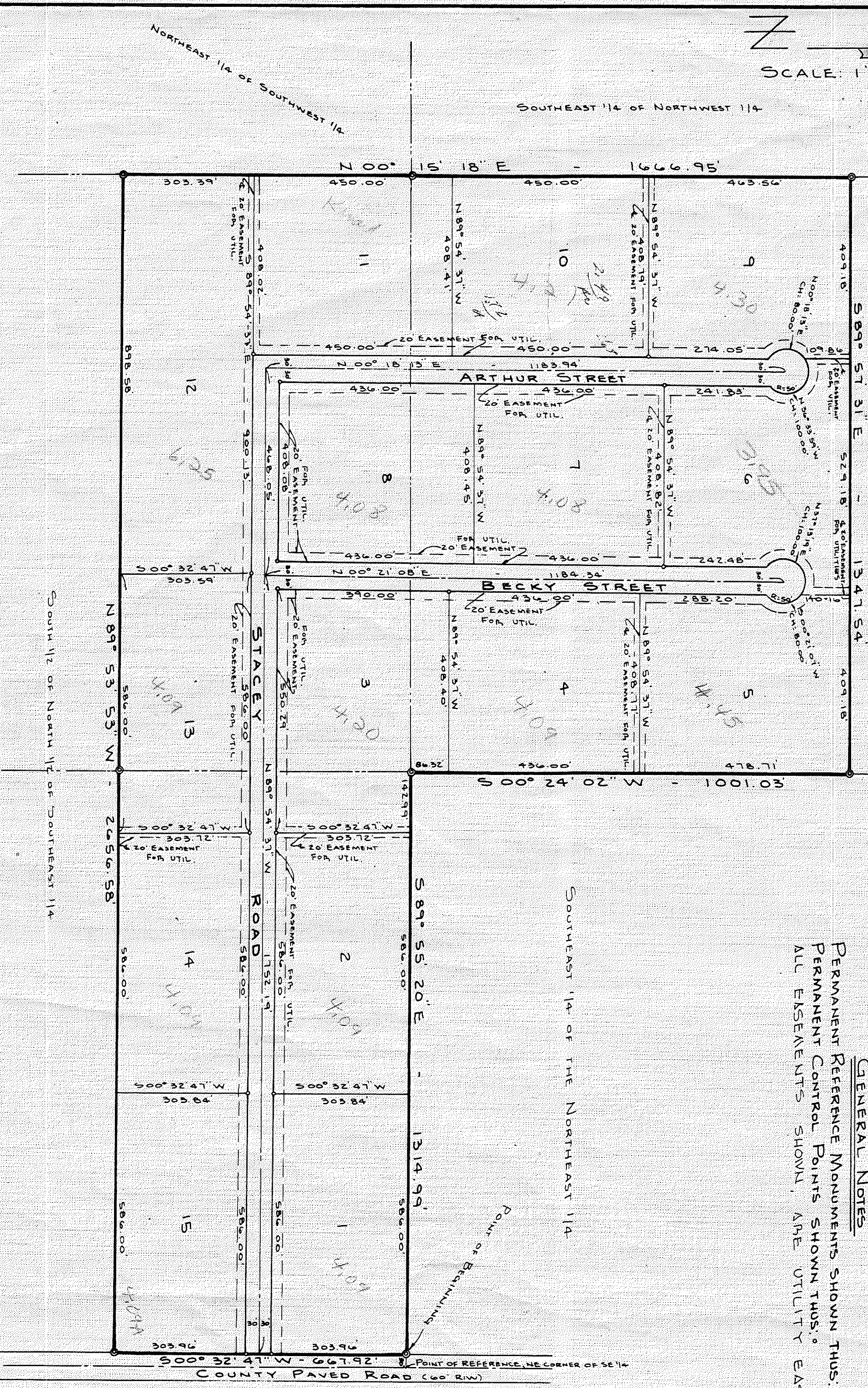
# OAK HOLLOW ESTATES

SITUATED IN THE NORTHEAST 1/4 AND THE SOUTHEAST 1/4 OF SECTION 29, TOWNSHIP 2 SOUTH, RANGE 13 EAST, SUWANNEE COUNTY, FLORIDA.

## GRAPHIC SCALE



LOCATION MAP  
SCALE: 1" = 200'



**SURVEYOR'S NOTE:**  
BEARING DATUM SHOWN WAS TAKEN FROM STATE ROAD DATA ON STATE ROAD NO. 136.

**GENERAL NOTES:**  
PERMANENT REFERENCE MONUMENTS SHOWN THUS:  $\odot$   
PERMANENT CONTROL POINTS SHOWN THUS:  $\bullet$   
ALL EASEMENTS SHOWN ARE UTILITY EASEMENTS.

ON Computer Mapping  
9-24-97

## DESCRIPTION

PART OF THE SOUTHWEST 1/4 OF THE NORTHEAST 1/4 AND THE NORTH 1/2 OF THE NORTH 1/2 OF THE SOUTHWEST 1/4 OF SECTION 29, TOWNSHIP 2 SOUTH, RANGE 13 EAST, SUWANNEE COUNTY, FLORIDA, BEING MORE PARTICULARLY DESCRIBED AS FOLLOWS:  
RANGE 13 EAST, SUWANNEE COUNTY, FLORIDA, BEING MORE PARTICULARLY DESCRIBED AS FOLLOWS:  
FOR A POINT OF REFERENCE, COMMENCE AT THE NORTHEAST CORNER OF THE SOUTHWEST 1/4 OF SAID SECTION 29; THENCE RUN NORTH 89° 55' 20" WEST, A DISTANCE OF 30.00 FEET FOR A POINT OF BEGINNING; THENCE RUN SOUTH 00° 32' 47" WEST, A DISTANCE OF 667.92 FEET; THENCE RUN NORTH 89° 53' 53" WEST, A DISTANCE OF 2656.58 FEET; THENCE RUN NORTH 00° 15' 18" EAST, A DISTANCE OF 1666.95 FEET; THENCE RUN SOUTH 89° 57' 31" EAST, A DISTANCE OF 1347.54 FEET; THENCE RUN SOUTH 00° 24' 07" WEST, A DISTANCE OF 1001.03 FEET; THENCE RUN SOUTH 89° 55' 20" EAST, A DISTANCE OF 1314.99 FEET TO THE POINT OF BEGINNING.

## ADOPTION AND DEDICATION

WE HEREBY CERTIFY THAT WE ARE THE LAND OWNERS OF THE LANDS DESCRIBED IN THE CAPTION ABOVE AND THAT WE HAVE CAUSED THE SAME TO BE SURVEYED AND SUBDIVIDED AND THIS PLAT, OAK HOLLOW ESTATES IS MADE IN ACCORDANCE WITH SAID SURVEY IS HEREBY ADOPTED AS THE TRUE AND CORRECT PLAT OF SAID LANDS AND THAT ALL DRIVES AND EASEMENTS SHOWN UPON THIS PLAT ARE IRREVOCABLY AND WITHOUT RESERVATION DEDICATED TO THE PUBLIC.  
IN WITNESS SIGNED THIS \_\_\_\_\_ DAY OF \_\_\_\_\_ A.D. 1979.

OWNER: EDGAR A. SOULES  
OWNER: LEONA SOULES

## STATE OF FLORIDA, COUNTY OF SUWANNEE

I HEREBY CERTIFY THAT ON THIS DAY PERSONALLY APPEARED BEFORE ME, AN OFFICER DULY AUTHORIZED TO ADMINISTER OATHS AND TAKE ACKNOWLEDGMENTS, EDGAR A. SOULES AND LEONA SOULES (HIS WIFE), TO ME WELL KNOWN TO BE THE PERSONS DESCRIBED IN AND WHO EXECUTED THE FOREGOING DEDICATION AND ACKNOWLEDGED BEFORE ME THAT THEY EXECUTED THE SAME FOR THE USES AND PURPOSES THEREIN EXPRESSED.  
WITNESS MY SIGNATURE AND OFFICIAL SEAL AT LIVE OAK, IN THE COUNTY OF SUWANNEE AND STATE OF FLORIDA, THIS 11th DAY OF December, A.D. 1979.

NOTARY PUBLIC STATE OF FLORIDA AT LARGE  
MY COMMISSION EXPIRES: 5/1/80

## DEDICATION FOR MORTGAGE

THIS IS TO CERTIFY THAT THE FIRST COMMERCIAL BANK OF LIVE OAK, A CORPORATION UNDER THE LAWS OF THE STATE OF FLORIDA, BEING A MORTGAGEE OF THE LANDS DESCRIBED IN THE FOREGOING CAPTION OF THIS PLAT DO HEREBY JOIN IN AND MAKE THEMSELVES A PART OF THE DEDICATION OF SAID LANDS AND PLAT KNOWN AS OAK HOLLOW ESTATES FOR THE USES AND PURPOSES THEREIN EXPRESSED AND DEDICATE ALL DRIVES AND EASEMENTS SHOWN ON THIS PLAT TO THE PUBLIC.

IN WITNESS WHEREOF, THE FIRST COMMERCIAL BANK OF LIVE OAK, HAS CAUSED THESE PRESENT TO BE SIGNED BY ITS PRESIDENT, A. P. NOTT, AND ITS VICE PRESIDENT, RAYMOND A. SCHARID, BY AND WITH THE AUTHORITY OF ITS BOARD OF DIRECTORS IN ITS NAME AND WITH ITS CORPORATE SEAL AFFIXED THIS 11th DAY OF December, A.D. 1979.

THE FIRST COMMERCIAL BANK OF LIVE OAK  
PRESIDENT - A. P. NOTT  
VICE PRESIDENT - RAYMOND A. SCHARID

## STATE OF FLORIDA, COUNTY OF SUWANNEE

I HEREBY CERTIFY THAT ON THIS DAY PERSONALLY APPEARED BEFORE ME, AN OFFICER DULY AUTHORIZED TO ADMINISTER OATHS AND TAKE ACKNOWLEDGMENTS, A. P. NOTT, PRESIDENT AND RAYMOND A. SCHARID, VICE PRESIDENT OF THE FIRST COMMERCIAL BANK OF LIVE OAK, A CORPORATION UNDER THE LAWS OF THE STATE OF FLORIDA, TO ME WELL KNOWN TO BE THE PERSONS WHO EXECUTED THE SAME FREELY AND VOLUNTARILY AS THE ACT AND DEED OF SAID CORPORATION WITH THE OFFICIAL SEAL OF SAID CORPORATION AFFIXED THEREON.  
WITNESS MY SIGNATURE AND OFFICIAL SEAL AT LIVE OAK, IN THE COUNTY OF SUWANNEE AND THE STATE OF FLORIDA, THIS 12th DAY OF December, A.D. 1979.

NOTARY PUBLIC STATE OF FLORIDA AT LARGE  
MY COMMISSION EXPIRES: 5/1/80

## COUNTY COMMISSION APPROVAL

EXAMINED AND APPROVED BY THE COUNTY COMMISSION OF SUWANNEE COUNTY, FLORIDA, THIS 11th DAY OF February, 1980, A.D. 1979.

## CLERK'S CERTIFICATE

THIS IS TO CERTIFY THAT THIS PLAT HAS BEEN FILED FOR RECORD AND RECORDED IN THE PLAT BOOK 1296 PAGE 1 OF THE PUBLIC RECORDS OF SUWANNEE COUNTY, FLORIDA, THIS 11th DAY OF February, 1980, A.D. 1979.

## SURVEYOR'S CERTIFICATE

I HEREBY CERTIFY THAT THIS PLAT IS A CORRECT REPRESENTATION OF THE LAND AS SURVEYED UNDER MY DIRECTION AND SUPERVISION AND THAT THE SURVEY DATA COMPLETES WITH THE REQUIREMENTS OF CHAPTER NO. 177 OF THE LAWS OF THE STATE OF FLORIDA, AND THAT PERMANENT REFERENCE MONUMENTS AND PERMANENT CONTROL POINTS HAVE BEEN SET ACCORDING TO THE ABOVE REFERENCED LAWS SHOWN. SIGNED THIS 11th DAY OF December, A.D. 1979.

SIGNED: J. SHERMAN FRIER, P.L.S.  
FLORIDA CERTIFICATE NO. 2245  
ALL STATE LAND SURVEYORS, INC.  
P.O. BOX 580