

# OAKWOOD ACRES

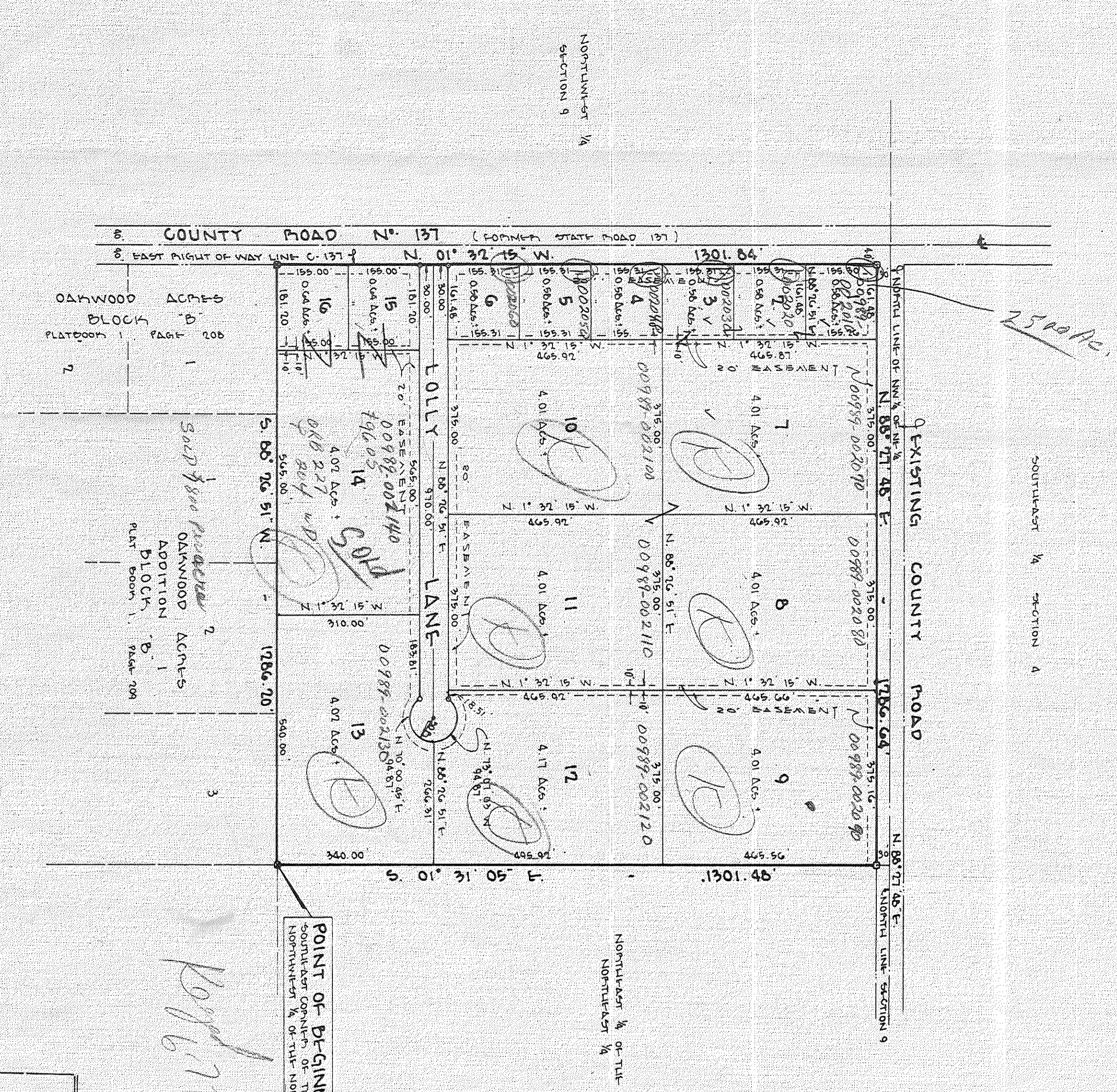
## ADDITION 2

MSD # 1200  
 Sold \$ 1600  
 Jones Oakwood Add #1

PLAT BOOK I PAGE 270  
 6-15-82  
 Edie Clarke

SITUATED IN TOWNSHIP 9 SOUTH RANGE 16 EAST  
 COUNTY, FLORIDA, BEING MORE PARTICULARLY DESCRIBED AS FOLLOWS:  
 BEGIN AT THE SOUTHWEST CORNER OF THE NORTHWEST 1/4 OF SECTION 9,  
 TOWNSHIP 9 SOUTH, RANGE 16 EAST, COUNTY, FLORIDA, AND RUN S. 88° 26' 51" W. 1786.70 FEET TO THE  
 EAST RIGHT OF WAY LINE OF COUNTY ROAD NO. 137; THENCE N. 01° 37' 15" W. 1301.84 FEET TO A POINT SAID POINT  
 BEING 30.00 FEET SOUTH OF THE NORTH LINE OF SAID NORTHWEST 1/4 OF THE NORTHWEST 1/4; THENCE N. 88° 27' 46" E.  
 1786.70 FEET TO SAID NORTH LINE; THENCE S. 01° 31' 05" E. 1301.84 FEET TO THE POINT OF BEGINNING.  
 DB  
 5-5-82

ON  
 Computer Mapping  
 8-19-91



- LEGEND**
- 1. Existing Permanent Restrictive Monument
  - 2. Permanent Restrictive Monument Set (P.R.M.)
  - 3. Permanent Control Point Set (C.P.S.)
- SURVEYOR'S NOTES:**
- 1) BEARINGS SHOWN HEREON ARE BASED ON COUNTY ROAD NO. 137
  - 2) EASEMENTS SHOWN HEREON ARE FOR UTILITIES

### DEDICATION FOR MONTGOMERY

This is to certify that the State Exchange Bank of Lake City, a corporation under the laws of the State of Florida, being a subsidiary of the lands described in the foregoing plat, has caused the lands herein dedicated and platted to be known as Oakwood Acres Addition 2 and that all terms, bonds and easements as shown hereon are hereby dedicated to the public use of the State of Florida.

THE STATE EXCHANGE BANK OF LAKE CITY  
 HAS CAUSED THESE PRESENTS TO BE SIGNED BY ITS PRESIDENT, HOWARD VAN ANDRUE, ASSISTANT CASHIER, SHULEY GIBBERTS, BY AND WITH THE AUTHORITY OF ITS BOARD OF DIRECTORS IN ITS WATER AND WITH ITS CORPORATE SEAL AFFIXED THIS 24TH DAY OF NOVEMBER, A.D. 1981

HOWARD VAN ANDRUE, PRESIDENT  
 SHULEY GIBBERTS, ASSISTANT CASHIER  
 WITNESSES: [Signatures]

### ADOPTION AND DEDICATION

KNOW ALL MEN BY THESE PRESENTS THAT Lolly Dale Farms, Ltd., a Florida limited partnership, as owner, has caused the lands herein dedicated and platted to be known as Oakwood Acres Addition 2 and that all terms, bonds and easements as shown hereon are hereby dedicated to the public use of the State of Florida.

IN WITNESS WHEREOF, Lolly Dale Farms, Ltd., a Florida limited partnership, has caused these presents to be executed.

WITNESSES: [Signatures]

FOR LOLLY DALE FARMS LTD.  
 Henry L. Madsen, III  
 (General Partner)

### ACKNOWLEDGEMENT

I HEREBY CERTIFY THAT ON THIS 24TH DAY OF NOVEMBER, A.D. 1981, BEFORE ME PERSONALLY APPEARED HOWARD VAN ANDRUE, PRESIDENT AND SHULEY GIBBERTS, ASSISTANT CASHIER, OF THE STATE EXCHANGE BANK OF LAKE CITY, A CORPORATION UNDER THE LAWS OF THE STATE OF FLORIDA, TO ME WELL KNOWN TO BE THE PERSONS WHO EXECUTED THE SAME FREELY AND VOLUNTARILY AS THE ACT AND DECISION OF SAID CORPORATION WITH THE OFFICIAL SEAL OF SAID CORPORATION AFFIXED THERE-TO.

WITNESSES MY HAND AND SEAL AT LAKE CITY, STATE OF FLORIDA, THIS 24TH DAY OF NOVEMBER, A.D. 1981.

[Signature]  
 Notary Public, State of Florida  
 My Commission Expires: [Date]

### CERTIFICATE OF CLERK

I HEREBY CERTIFY THAT THE FOREGOING PLAT HAVING BEEN DULY APPROVED BY THE BOARD OF COUNTY COMMISSIONERS OF SUWMANNT COUNTY, FLORIDA WAS ACCEPTED BY ME AND FILED FOR RECORD THIS 5TH DAY OF OCTOBER, A.D. 1981 IN PLAT BOOK I PAGE 270 OF THE PUBLIC RECORDS OF SUWMANNT COUNTY, FLORIDA.

[Signature]  
 Clerk of Circuit Court  
 Suwmannt County, Florida

### SURVEYOR'S CERTIFICATE

I HEREBY CERTIFY THAT THIS PLAT IS A TRUE AND CORRECT REPRESENTATION OF THE LANDS SURVEYED AND SHOWN HEREON, THAT THE SURVEY WAS MADE UNDER MY PERSONAL SUPERVISION AND SUPERVISION, THAT PERMANENT RESTRICTIVE MONUMENTS AND PERMANENT CONTROL POINTS HAVE BEEN PLACED AS SHOWN, AND THAT THE SURVEY DATA SHOWN CONFORMS WITH THE REQUIREMENTS OF CHAPTER 117, FLORIDA STATUTES.

[Signature]  
 J. Sherman Jones  
 J. Sherman Jones, P.L.S.  
 F.L.A. REG. CERT. NO. 7245  
 DATE: OCT. 5, 1981

### APPROVED BY BOARD OF COUNTY COMMISSIONERS

SIGNED: [Signature], CLERK  
 DATE: [Date]

### SEAL: THE STATE EXCHANGE BANK

### SEAL: NOTARY