

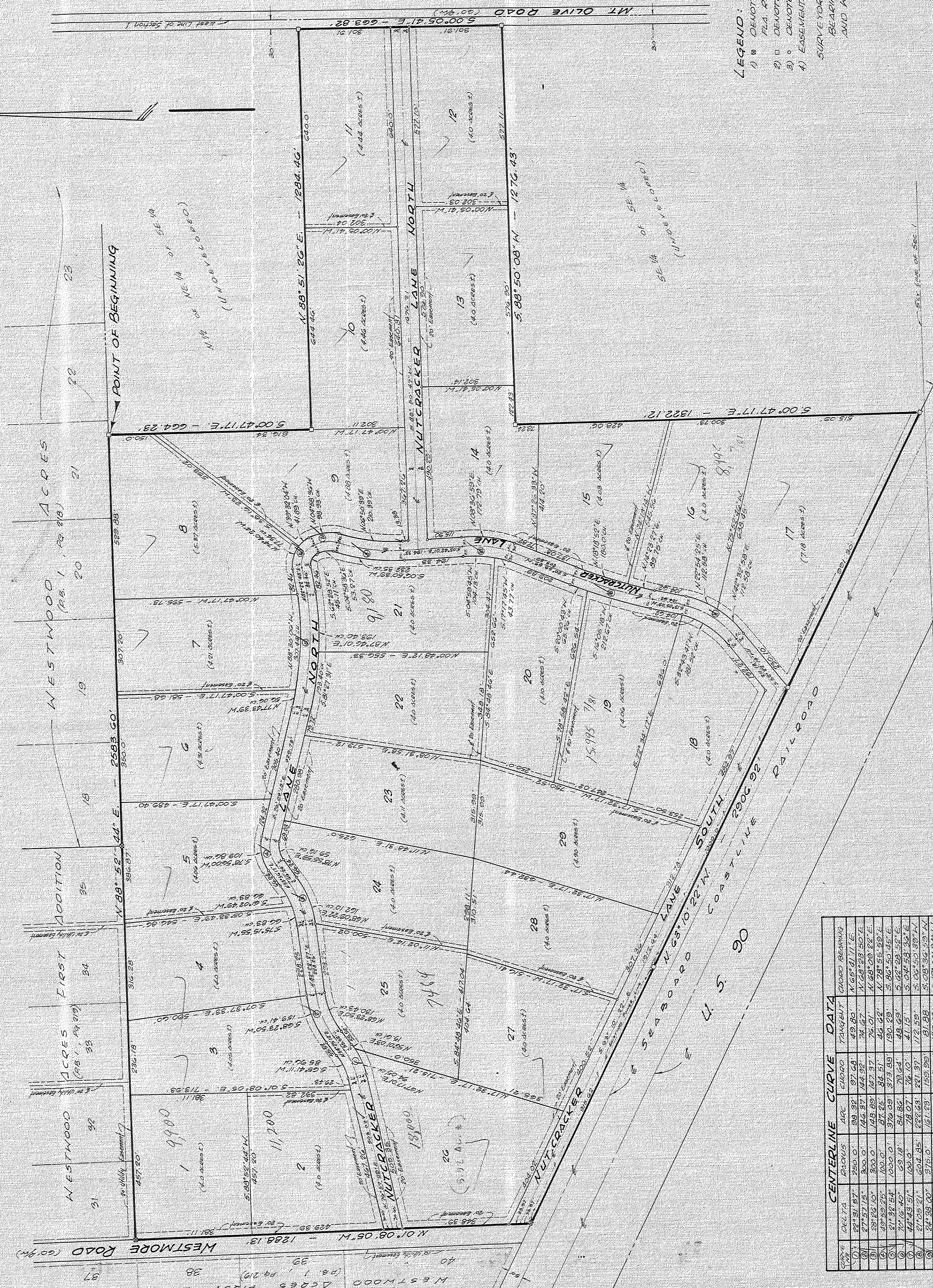
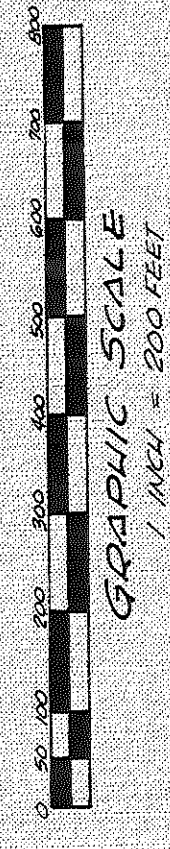
# PLANTATION GROVE ESTATES

SITUATED IN THE SOUTH 1/2 OF SECTION 1, TOWNSHIP 2 SOUTH, RANGE 12 EAST, SUNANNEE COUNTY, FLORIDA.

**DESCRIPTION:**  
PART OF THE SOUTH 1/2 OF SECTION 1, TOWNSHIP 2 SOUTH, RANGE 12 EAST, SUNANNEE COUNTY, FLORIDA BEING MORE PARTICULARLY DESCRIBED AS FOLLOWS: 100 FEET OF BEGINNING COMMENCE AT THE NORTHWEST CORNER OF THE SOUTHEAST 1/4 OF SAID SECTION 1, THENCE RUN SOUTH 00°47'17" EAST A DISTANCE OF 624.23 FEET, THENCE RUN NORTH 88°51'25" EAST A DISTANCE OF 1284.40 FEET TO THE WEST RIGHT-OF-WAY LINE OF MOUNT OLIVE ROAD, THENCE RUN SOUTH 00°05'41" EAST ALONG SAID WEST RIGHT-OF-WAY LINE A DISTANCE OF 663.82 FEET, THENCE RUN SOUTH 00°47'17" WEST ALONG SAID WEST RIGHT-OF-WAY LINE A DISTANCE OF 1322.12 FEET TO THE NORTHERLY RIGHT-OF-WAY LINE OF SEASIDE COASTLINE RAILROAD, THENCE RUN NORTH 83°01'22" WEST ALONG SAID NORTHERLY RIGHT-OF-WAY LINE A DISTANCE OF 2964.92 FEET TO THE EAST RIGHT-OF-WAY LINE OF WESTMORE ROAD, THENCE RUN NORTH 01°20'05" WEST ALONG SAID EAST RIGHT-OF-WAY LINE OF WESTMORE ROAD A DISTANCE OF 1284.40 FEET TO THE SOUTHWEST CORNER OF TRACT 31, WESTWOOD ACRES FIRST ADDITION, AS RECORDED IN PLAT BOOK 1, PAGE 20 OF THE PUBLIC RECORDS OF SAID COUNTY; THENCE RUN NORTH 88°52'42" EAST ALONG THE SOUTH LINE OF SAID WESTWOOD ACRES FIRST ADDITION AND THE SOUTH LINE OF WESTWOOD ACRES AS RECORDED IN PLAT BOOK 1, PAGE 20 OF SAID PUBLIC RECORDS, A DISTANCE OF 2983.60 FEET TO THE POINT OF BEGINNING, CONTAINING 136.08 ACRES MORE OR LESS.

198' per Ac.  
11500' per Ac.  
Sold @ 1850

On Aerial Map  
1/6/80



STATION	CHORD BEARING	CHORD DISTANCE	TRANSIT BEARING	TRANSIT DISTANCE
1	S 88° 51' 25" E	1284.40	S 88° 51' 25" E	1284.40
2	S 00° 05' 41" E	663.82	S 00° 05' 41" E	663.82
3	S 00° 47' 17" W	1322.12	S 00° 47' 17" W	1322.12
4	N 83° 01' 22" W	2964.92	N 83° 01' 22" W	2964.92
5	N 01° 20' 05" W	1284.40	N 01° 20' 05" W	1284.40
6	N 88° 52' 42" E	2983.60	N 88° 52' 42" E	2983.60
7	N 88° 52' 42" E	2983.60	N 88° 52' 42" E	2983.60
8	N 88° 52' 42" E	2983.60	N 88° 52' 42" E	2983.60
9	N 88° 52' 42" E	2983.60	N 88° 52' 42" E	2983.60
10	N 88° 52' 42" E	2983.60	N 88° 52' 42" E	2983.60
11	N 88° 52' 42" E	2983.60	N 88° 52' 42" E	2983.60
12	N 88° 52' 42" E	2983.60	N 88° 52' 42" E	2983.60
13	N 88° 52' 42" E	2983.60	N 88° 52' 42" E	2983.60
14	N 88° 52' 42" E	2983.60	N 88° 52' 42" E	2983.60
15	N 88° 52' 42" E	2983.60	N 88° 52' 42" E	2983.60
16	N 88° 52' 42" E	2983.60	N 88° 52' 42" E	2983.60
17	N 88° 52' 42" E	2983.60	N 88° 52' 42" E	2983.60
18	N 88° 52' 42" E	2983.60	N 88° 52' 42" E	2983.60
19	N 88° 52' 42" E	2983.60	N 88° 52' 42" E	2983.60
20	N 88° 52' 42" E	2983.60	N 88° 52' 42" E	2983.60
21	N 88° 52' 42" E	2983.60	N 88° 52' 42" E	2983.60
22	N 88° 52' 42" E	2983.60	N 88° 52' 42" E	2983.60
23	N 88° 52' 42" E	2983.60	N 88° 52' 42" E	2983.60
24	N 88° 52' 42" E	2983.60	N 88° 52' 42" E	2983.60
25	N 88° 52' 42" E	2983.60	N 88° 52' 42" E	2983.60
26	N 88° 52' 42" E	2983.60	N 88° 52' 42" E	2983.60
27	N 88° 52' 42" E	2983.60	N 88° 52' 42" E	2983.60
28	N 88° 52' 42" E	2983.60	N 88° 52' 42" E	2983.60
29	N 88° 52' 42" E	2983.60	N 88° 52' 42" E	2983.60
30	N 88° 52' 42" E	2983.60	N 88° 52' 42" E	2983.60
31	N 88° 52' 42" E	2983.60	N 88° 52' 42" E	2983.60
32	N 88° 52' 42" E	2983.60	N 88° 52' 42" E	2983.60
33	N 88° 52' 42" E	2983.60	N 88° 52' 42" E	2983.60
34	N 88° 52' 42" E	2983.60	N 88° 52' 42" E	2983.60

**ADOPTION AND DEDICATION:**  
KNOW ALL MEN BY THESE PRESENTS THAT KERMIT R. HOVNE AND R.A. GREENE, PRESIDENT AND SECRETARY RESPECTIVELY OF G-H INVESTMENTS OF LIVE OAK INC. A FLORIDA CORPORATION AS OWNED HAVE CAUSED THE LANDS HEREIN DESCRIBED TO BE SURVEYED, SUBDIVIDED AND PLATTED TO BE KNOWN AS PLANTATION GROVE ESTATES AND THAT ALL STREETS, ROADS AND EASEMENTS AS SHOWN ARE HEREBY DEDICATED TO THE PERPETUAL USE OF THE PUBLIC FOR PROPER USES AND PURPOSES HEREIN STATED.

IN WITNESS WHEREOF G-H INVESTMENTS OF LIVE OAK INC., A FLORIDA CORPORATION HAVE CAUSED THESE PRESENTS TO BE EXECUTED WITH ITS SEAL DULY AFFIXED HERETO.

WITNESS: Kermit R. Hovne  
Kermit R. Hovne  
R.A. Greene  
R.A. Greene (Secretary)

**STATE OF FLORIDA, COUNTY OF SUNANNEE:**  
I HEREBY CERTIFY THAT ON THIS 12th DAY OF MAY A.D. 1980 BEFORE ME PERSONALLY APPEARED KERMIT R. HOVNE AND R.A. GREENE, PRESIDENT AND SECRETARY RESPECTIVELY OF G-H INVESTMENTS OF LIVE OAK, INC. A FLORIDA CORPORATION, AS OWNED TO ME KNOWN TO BE THE INDIVIDUALS AND OFFICERS DESCRIBED IN AND WHO EXECUTED THE FOREGOING DECLARATION, AND THEY ACKNOWLEDGE EXECUTION THEREOF FOR AND ON BEHALF OF SAID CORPORATION WITH THEIR SEAL AFFIXED HERETO.

WITNESS MY HAND AND SEAL AT Live Oak, FL STATE OF FLORIDA THIS 12th DAY OF May, 1980.

[Signature]  
NOTARY PUBLIC, STATE OF FLORIDA  
MY COMMISSION EXPIRES 12/31/81

**DEDICATION FOR MORTGAGEE:**  
KNOW ALL MEN BY THESE PRESENTS THE HERBERT J. REES, AS THE PERSONAL REPRESENTATIVE OF THE ESTATE OF J.M. BLUMME, DECEASED AS MORTGAGEE AND KERMIT R. HOVNE, AS MORTGAGEE OF THE LANDS DESCRIBED IN THE FOREGOING CAPTION OF THIS PLAT, DO HEREBY JOIN IN AND MAKE THEMSELVES A PARTY TO THE DEDICATION OF SAID LANDS AND GRANT TO BE KNOWN AS PLANTATION GROVE ESTATES FOR THE USES AND PURPOSES THEREIN EXPRESSED AND DEDICATE ALL STREETS, ROADS AND EASEMENTS AS SHOWN TO THE PERPETUAL USE OF THE PUBLIC FOR PROPER USES AND PURPOSES HEREOF STATED AS THE PERSONAL REPRESENTATIVE OF THE ESTATE OF J.M. BLUMME, DECEASED (MORTGAGEE).

WITNESS: Herbert J. Rees  
Herbert J. Rees  
WITNESS: Kermit R. Hovne  
Kermit R. Hovne

**STATE OF FLORIDA, COUNTY OF SUNANNEE:**  
I HEREBY CERTIFY THAT ON THIS 12th DAY OF MAY A.D. 1980 BEFORE ME PERSONALLY APPEARED HERBERT J. REES, AS THE PERSONAL REPRESENTATIVE OF THE ESTATE OF J.M. BLUMME, DECEASED, AS MORTGAGEE AND KERMIT R. HOVNE, AN INDIVIDUAL, AS MORTGAGEE, TO ME KNOWN TO BE THE INDIVIDUALS AND OFFICERS DESCRIBED IN AND WHO EXECUTED THE FOREGOING DEDICATION, AND THEY ACKNOWLEDGE EXECUTION THEREOF FOR AND ON BEHALF OF SAID MORTGAGEES HERETO.

WITNESS MY HAND AND SEAL AT Live Oak, FL STATE OF FLORIDA THIS 12th DAY OF May, 1980.

[Signature]  
NOTARY PUBLIC, STATE OF FLORIDA  
MY COMMISSION EXPIRES 12/31/81

**APPROVED BY BOARD OF COUNTY COMMISSIONERS:**  
SUNANNEE COUNTY FLORIDA:  
SIGNED: [Signature], CHAIRMAN  
ATTEST: [Signature], CLERK  
DATE: 5-12-80

**CERTIFICATE OF CLERK:**  
I HEREBY CERTIFY THAT THE FOREGOING PLAT HAVING BEEN DULY APPROVED BY THE BOARD OF COUNTY COMMISSIONERS OF SUNANNEE COUNTY FLORIDA HAS ACCEPTED AND FILED FOR RECORD THIS 12th DAY OF MAY A.D. 1980 IN PLAT BOOK 1 PAGE 231 OF THE PUBLIC RECORDS OF SUNANNEE COUNTY, FLORIDA.

[Signature]  
Clerk of Circuit Court  
SUNANNEE COUNTY, FLORIDA

**SURVEYORS CERTIFICATE:**  
I HEREBY CERTIFY THAT THIS PLAT IS A TRUE AND CORRECT REPRESENTATION OF THE LANDS SURVEYED AND SHOWN HEREON, THAT THE SURVEY WAS MADE UNDER MY RESPONSIBLE DIRECTION AND SUPERVISION THAT PERMANENT REFERENCE MONUMENTS AND PERMANENT CONTROL POINTS HAVE BEEN PLACED AS SHOWN, AND THAT THE SURVEY DATA SHOWN COMPLIES WITH THE REQUIREMENTS OF CHAPTER 177, FLORIDA STATUTES.

[Signature]  
J. Sherman  
FLORIDA REGISTERED CERTIFICATE NO. 2245  
DATE: MAY 12, 1980

**LEGEND:**  
1) 8' CONCRETE MONUMENT BY L. L. LEE & ASSOC., INC. FLA. REG. CERT. 101850.  
2) 0' CONCRETE PERMANENT REFERENCE MONUMENT, P.R.M.  
3) 0' CONCRETE PERMANENT CONTROL POINT, C.P.P.  
4) EASEMENTS SHOWN HEREON ARE FOR UTILITIES.

**SURVEYORS NOTE:**  
BEARING DUTYING HEREON PROJECTED FROM WESTWOOD ACRES AND WESTWOOD ACRES FIRST ADDITION.

PREPARED BY:  
**ALL STATE LAND SURVEYORS, INC.**  
P.O. BOX 580  
LIVE OAK, FLORIDA 32060