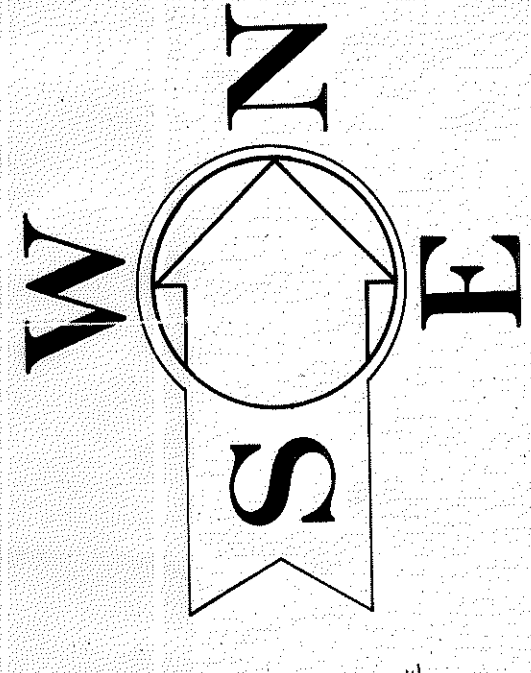
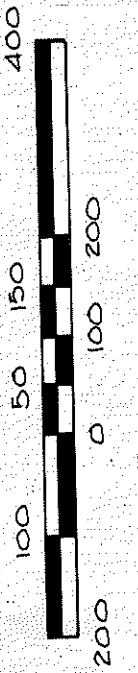


3 of 3



GRAPHIC SCALE
1" = 200'

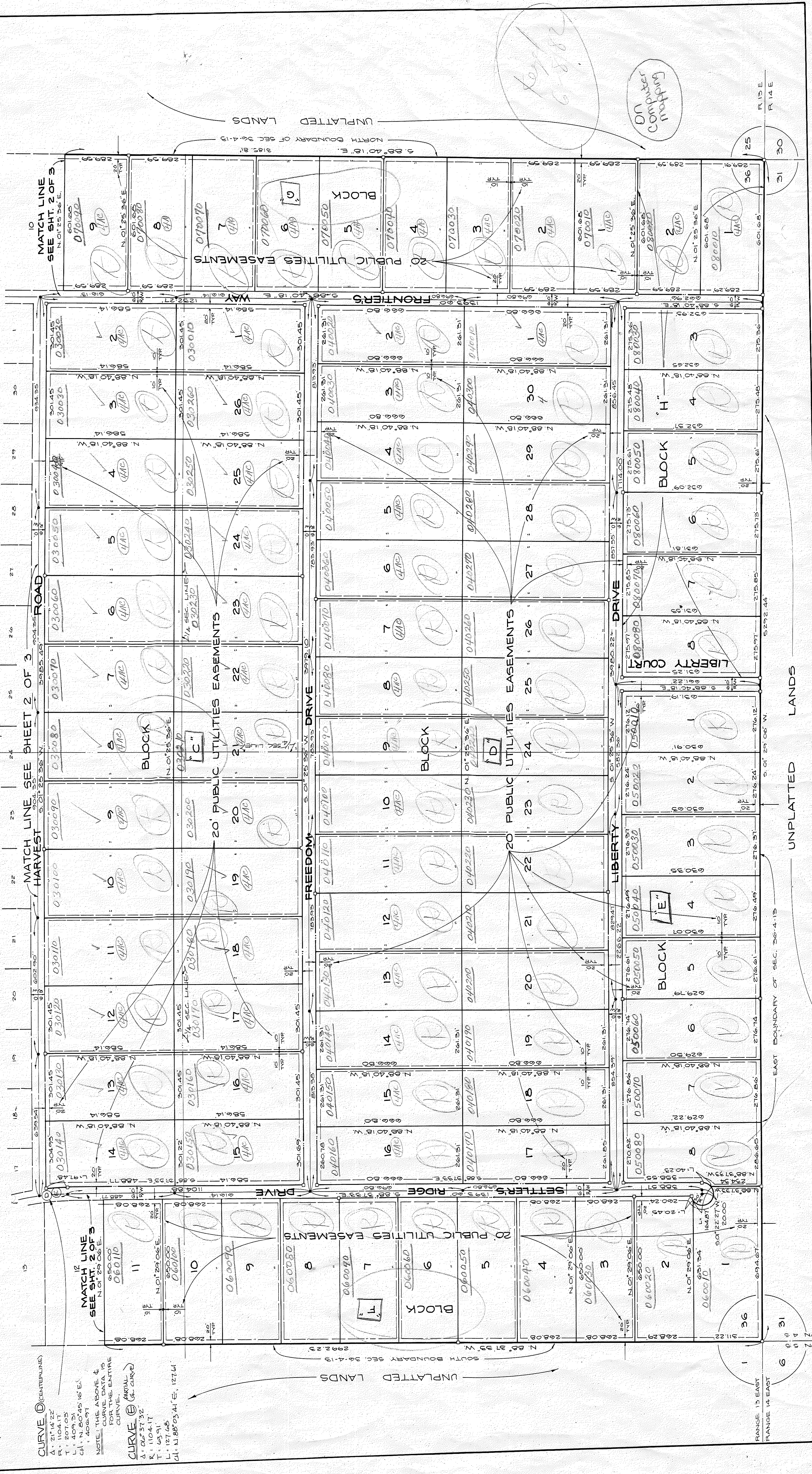


- PERMANENT REFERENCE MONUMENTS (P.R.M.'S)
- PERMANENT CONTROL POINTS (P.C.P.'S)

LOT	DELTA	RADIUS	TANGENT	ARC LENGTH	CHORD BEARING AND DISTANCE
BLOCK "F"					
1	183° 55' 45"	50.00	164.87	164.87	S. 51° 56' 05" W. 99.70
2	23° 26' 04"	50.00	10.97	20.45	N. 21° 52' 45" W. 20.31
BLOCK "C"					
14	04° 58' 29"	1134.17	48.77	91.48	N. 88° 54' 43" E. 91.45
5	48° 05' 58"	50.00	21.21	40.23	S. 65° 34' 34" E. 39.15

NOTES:
1. BEARINGS SHOWN HEREON WERE PROJECTED FROM THE TIME OF A SUBDIVISION IN 1880 AND MAY BE IN ERROR. A CHECK SHOULD BE MADE BY COMPASS RULE WAS 1/2", 2.65"

SETTLER'S RIDGE
A SUBDIVISION OF SECTION 36, TOWNSHIP 4 SOUTH, RANGE 13 EAST, AND A PORTION OF SECTIONS 1 AND 2, TOWNSHIP 5 SOUTH, RANGE 13 EAST, SUWANNEE COUNTY, FLORIDA.



CURVE (C) (CENTERLINE)
A: 21° 14' 22"
R: 1104.17
L: 209.23
CH: 408.97

NOTE: THE ABOVE CURVE DATA IS FOR THE ENTIRE CURVE.

CURVE (E) (PARTIAL CURVE)
A: 02° 37' 32"
R: 1104.17
L: 127.65
CH: 11.85° 23' 41" E, 127.61'

MATCH LINE SEE SHT. 2 OF 3
N. 01° 29' 06" E.
650.00
060110

MATCH LINE SEE SHT. 2 OF 3
N. 01° 29' 06" E.
650.00
060110

ON THE
CONTRARY

R 13 E
R 14 E

EAST BOUNDARY OF SEC. 36-4-13

RANGE 13 EAST
RANGE 14 EAST