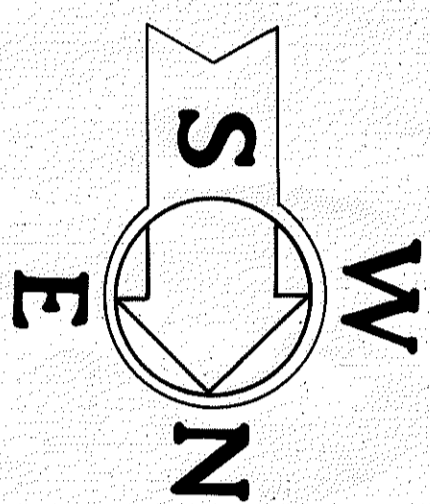


# SETTLER'S RIDGE

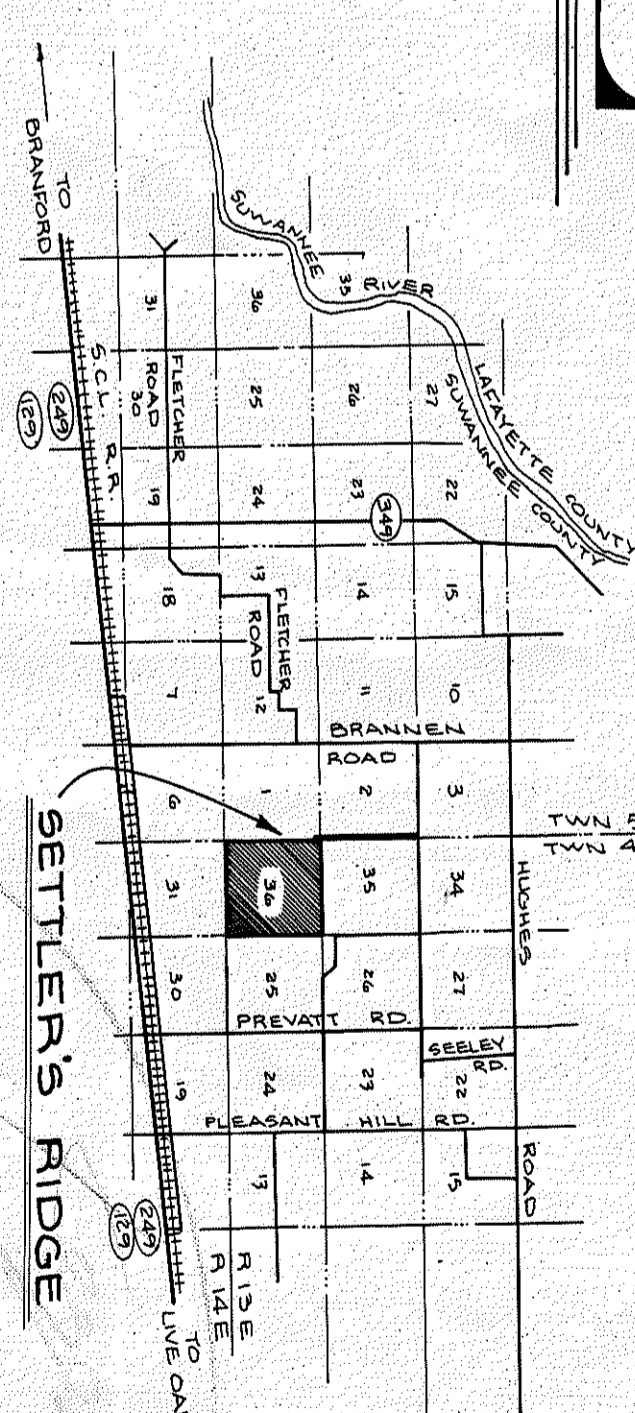
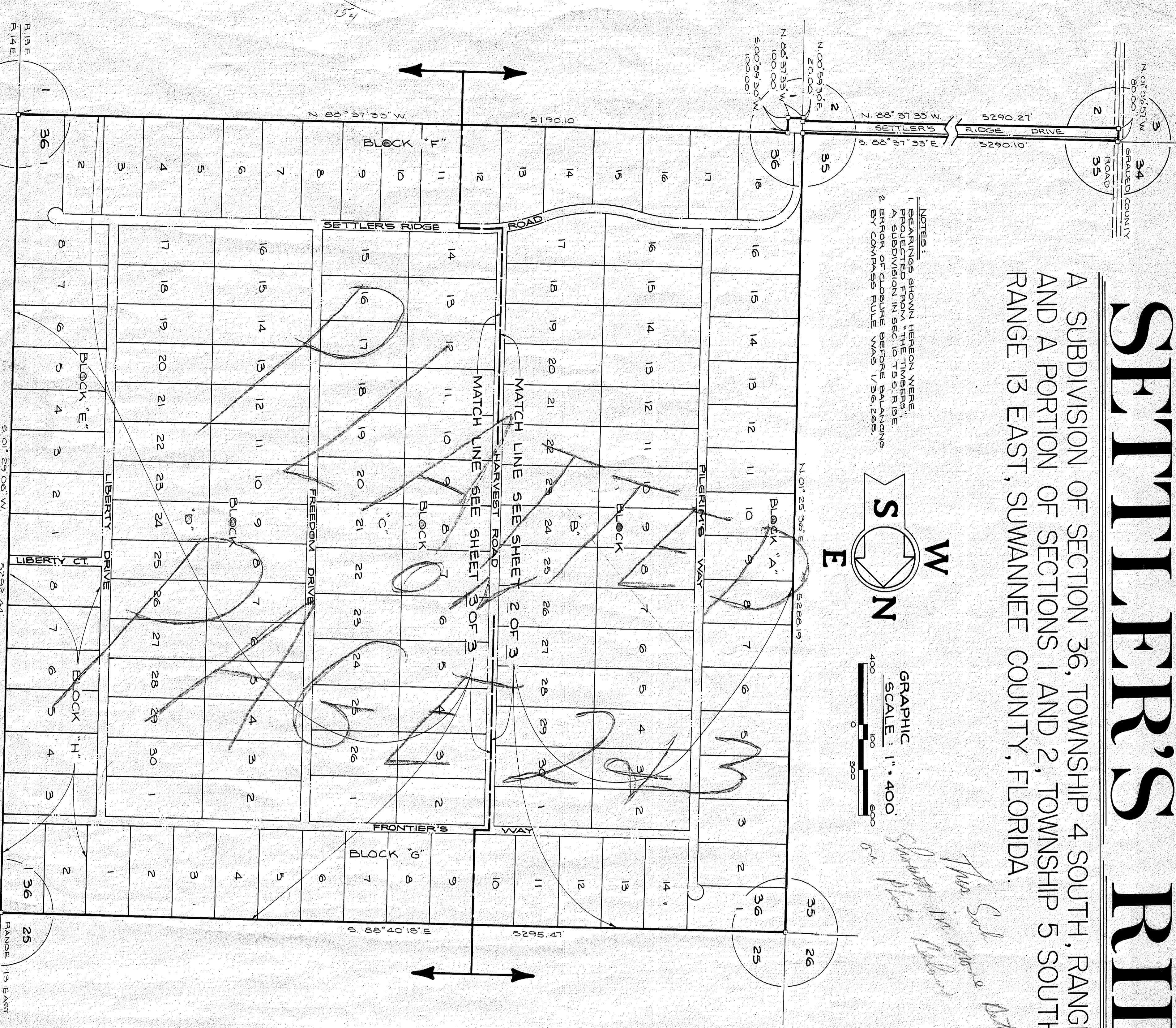
A SUBDIVISION OF SECTION 36, TOWNSHIP 4 SOUTH, RANGE 13 EAST, AND A PORTION OF SECTIONS 1 AND 2, TOWNSHIP 5 SOUTH, RANGE 13 EAST, SUWANNEE COUNTY, FLORIDA.

- NOTES:  
 1. BEARINGS SHOWN HEREON WERE OBTAINED FROM THE TIMBER SURVEY OF 1881.  
 2. ERROR OF ENCLOSURE BEFORE BALANCING BY COMPASS RULE WAS 1/32 OF AN INCH.



GRAPHIC SCALE: 1" = 400'  
 0 100 200 300 400 500 600

*True Sub area better than shown in below*  
*Shaded plots or*



### LEGAL DESCRIPTION

SECTION 36, TOWNSHIP 4 SOUTH, RANGE 13 EAST AND THE NORTH 100 FEET OF THE WEST 100 FEET OF THE NW 1/4 OF SECTION 1, TOWNSHIP 5 SOUTH, RANGE 13 EAST, AND THE NORTH 80 FEET OF SECTION 2, TOWNSHIP 5 SOUTH, RANGE 13 EAST, SUWANNEE COUNTY, FLORIDA.

### ADOPTION AND DEDICATION

SUWANNEE WOODLANDS, INC. DOES HEREBY CERTIFY THAT IT IS THE OWNER OF THE HEREON DESCRIBED PROPERTY AND DOES HEREBY DEDICATE TO THE PUBLIC FOREVER THE STREETS AND EASEMENTS AS SHOWN ON THIS PLAT OF SETTLER'S RIDGE.

*Tommy M. Faircloth, President*  
 TOMMY M. FAIRCLOTH, PRESIDENT

### ACKNOWLEDGEMENT

THE FOREGOING INSTRUMENT WAS ACKNOWLEDGED BEFORE ME THIS 24th DAY OF April, 1981 BY TOMMY M. FAIRCLOTH, PRESIDENT OF SUWANNEE WOODLANDS, INC. ON BEHALF OF THE CORPORATION.

### MORTGAGEE

NOTARY PUBLIC - STATE OF Florida AT LARGE *John H. Stiles*

### ACKNOWLEDGEMENT

THE FOREGOING INSTRUMENT WAS ACKNOWLEDGED BEFORE ME THIS 24th DAY OF April, 1981 BY CH. MARTIN, JR., VICE PRESIDENT OF SCOTT TIMBER COMPANY AND MEAD TIMBER COMPANY ON BEHALF OF SAID CORPORATIONS.

### MORTGAGEE

NOTARY PUBLIC - STATE OF Florida AT LARGE *John H. Stiles*

### MORTGAGEE

NOTARY PUBLIC - STATE OF Florida AT LARGE *John H. Stiles*

### ACKNOWLEDGEMENT

THE FOREGOING INSTRUMENT WAS ACKNOWLEDGED BEFORE ME THIS 24th DAY OF April, 1981 BY John H. Stiles, VICE PRESIDENT OF SCOTT TIMBER COMPANY AND MEAD TIMBER COMPANY ON BEHALF OF SAID CORPORATIONS.

### ACKNOWLEDGEMENT

THE FOREGOING INSTRUMENT WAS ACKNOWLEDGED BEFORE ME THIS 24th DAY OF April, 1981 BY John H. Stiles, VICE PRESIDENT OF SCOTT TIMBER COMPANY AND MEAD TIMBER COMPANY ON BEHALF OF SAID CORPORATIONS.

### SURVEYOR'S CERTIFICATE

I DO HEREBY CERTIFY THAT THIS PLAT OF SETTLER'S RIDGE IS A TRUE AND CORRECT REPRESENTATION OF THE HEREON DESCRIBED PROPERTY ACCORDING TO A SURVEY MADE UNDER MY RESPONSIBLE DIRECTION (P.C.R.S.) HAVE BEEN SET AS PERMANENT REFERENCE MONUMENTS (P.R.M.S.) AND PERMANENT CONTROL POINTS (P.C.P.S.) HAVE BEEN SET AS WITH ALL THE REQUIREMENTS OF CHAPTER 171 (F.S.) 1981.

### SUWANNEE COUNTY COMMISSIONER'S APPROVAL

APPROVED BY THE BOARD OF COMMISSIONERS OF SUWANNEE COUNTY, FLORIDA  
 DATE Dec. 1, 1981

### SUWANNEE COUNTY CLERK'S CERTIFICATE OF FILING

THIS PLAT HAS BEEN FILED FOR RECORD AND RECORDED IN THE PUBLIC RECORDS OF SUWANNEE COUNTY, FLORIDA THIS 24th DAY OF April, 1981.

### SUWANNEE COUNTY CLERK'S CERTIFICATE OF FILING

THIS PLAT HAS BEEN FILED FOR RECORD AND RECORDED IN THE PUBLIC RECORDS OF SUWANNEE COUNTY, FLORIDA THIS 24th DAY OF April, 1981.