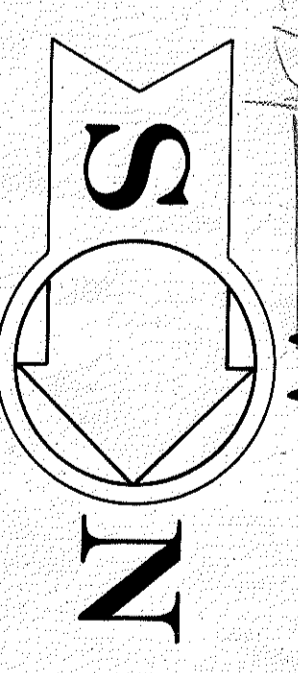


SETTLER'S RIDGE

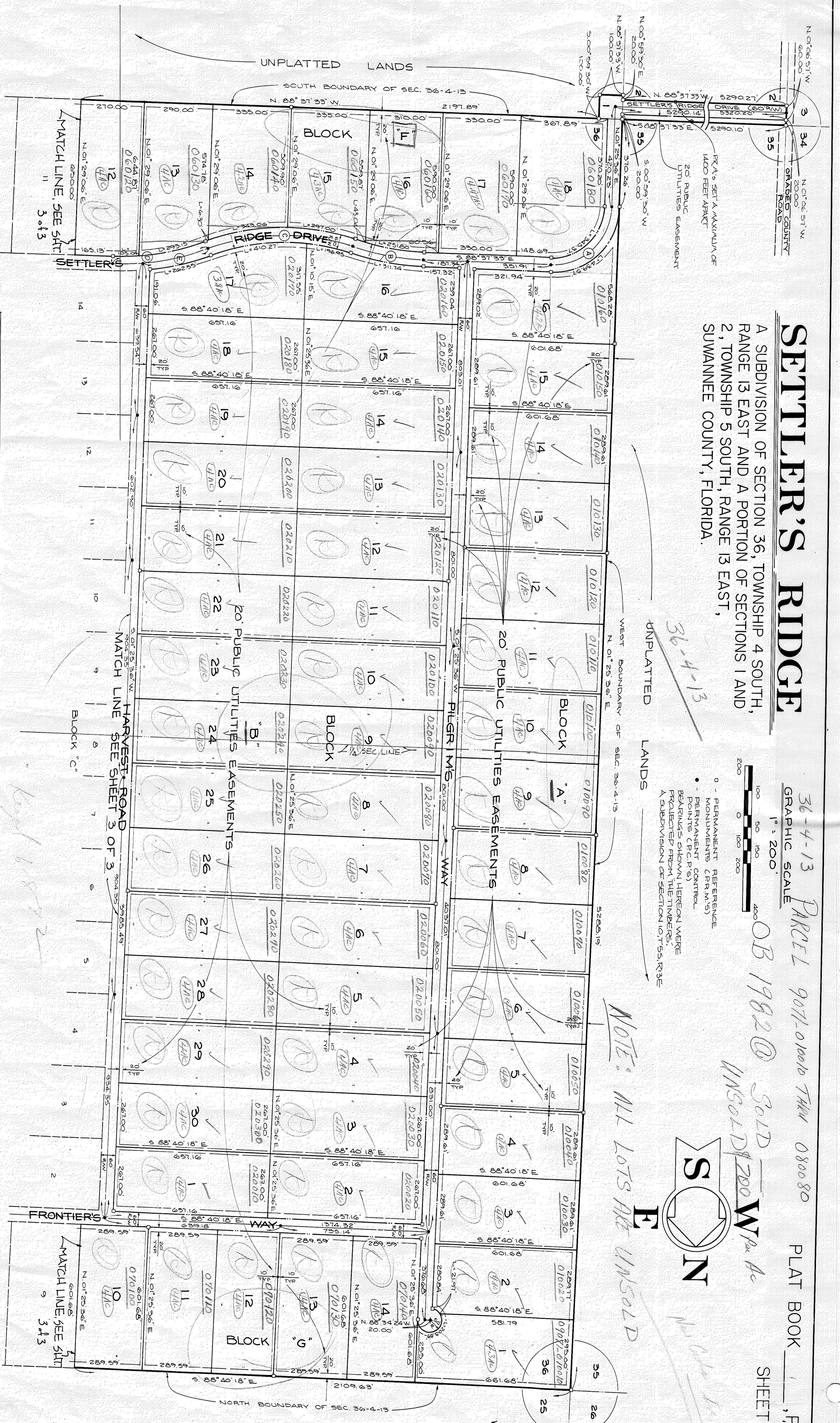
A SUBDIVISION OF SECTION 36, TOWNSHIP 4 SOUTH, RANGE 13 EAST AND A PORTION OF SECTIONS 1 AND 2, TOWNSHIP 5 SOUTH, RANGE 13 EAST, SUWANNEE COUNTY, FLORIDA.

36-4-13 PARCEL 9071-01001b THRU 080080 PLAT BOOK , PAGE 34
 GRAPHIC SCALE 1" = 200' OB 1982 @ SOLD 200 W Pa Ac SHEET 2 OF 3

- 0 - PERMANENT REFERENCE MONUMENTS (P.R.M.'S)
- PERMANENT CONTROL POINTS (C.P.'S)
- BEARINGS SHOWN HEREON WERE PROTECTED FROM THEFT BY A SUBDIVISION OF SECTION 10153.133E



NOTE: ALL LOTS ARE UNSOLD



RIGHT-OF-WAY CURVE DATA

LOT	DELTA	RADIUS	TANGENT	ARC LENGTH	CHORD BEARING AND DISTANCE
Block "A"					
1	23° 17' 33"	500.00	111.6	203.59	S 64° 46' 52" E 217.9
2	25° 10' 14"	500.00	111.6	219.71	S 64° 21' 04" E 217.9
16	57° 56' 51"	280.00	219.74	439.51	S 46° 24' 02" W 393.80
Block "F"					
12	05° 36' 11"	1074.17	52.56	103.04	S 82° 34' 21" W 1030.00
13	15° 36' 11"	1074.17	147.49	273.15	S 71° 51' 10" W 292.24
14	00° 21' 52"	990.90	5.15	6.30	S 17° 19' 01" W 6.30
15	19° 50' 11"	990.90	173.26	343.06	S 80° 25' 03" W 341.55
15	02° 21' 19"	1047.03	21.52	43.04	N 73° 40' 09" W 43.04
16	13° 46' 45"	1047.03	126.51	251.80	N 81° 44' 10" W 251.20
18	57° 56' 51"	280.00	219.80	439.57	S 46° 24' 02" W 310.98

CENTERLINE CURVE DATA

LOT	DELTA	RADIUS	TANGENT	ARC LENGTH	CHORD BEARING AND DISTANCE
A					
A	57° 56' 51"	280.00	249.77	392.41	N 46° 24' 02" E 353.59
B	16° 08' 04"	1077.03	152.66	303.29	S 60° 33' 31" E 302.29
C	37° 22' 26"	960.90	325.00	626.79	N 85° 49' 18" E 615.74
D	21° 14' 22"	1104.17	207.03	409.31	N 80° 45' 16" E 406.97
E	14° 36' 56"	1104.17	141.56	281.23	N 77° 26' 30" E 280.87