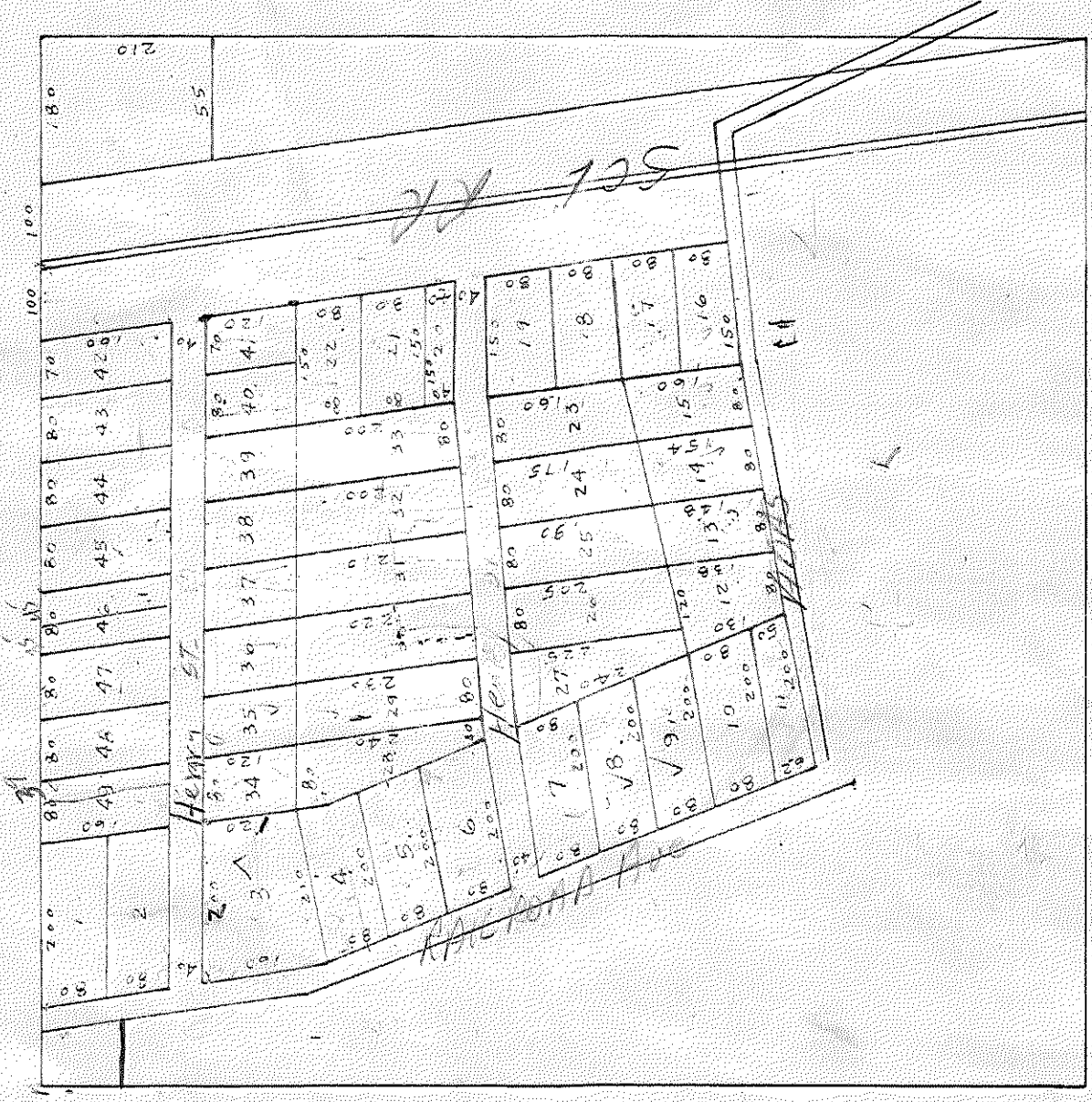


JULY 18, 1956

NW 1/4 OF SW 1/4  
COPIED FROM ORIGINAL PLAT  
SOUTH LIVE OAK SUBDIVISION  
SEC. 25 TWP. 2 RANGE 13 EAST



AUTHORIZED COPY.

# SOUTH LIVE OAK. SUWANNEE COUNTY FLA.

COPIED BY DREW & HARRIS.  
CHECKED BY Client of Circuit Court

320  
480

