

# SPRING LANDING PHASE II

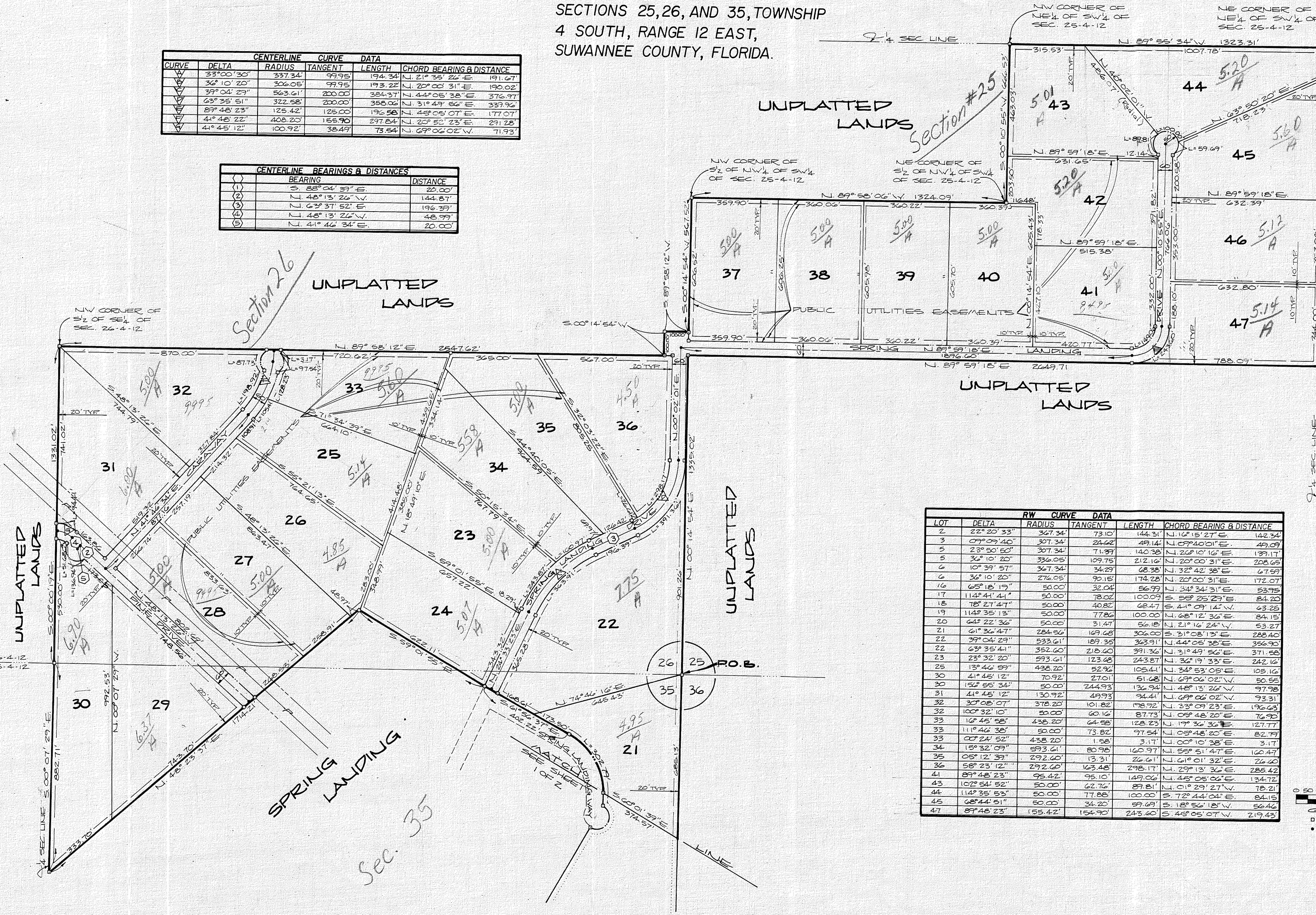
A SUBDIVISION OF A PORTION OF SECTIONS 25, 26, AND 35, TOWNSHIP 4 SOUTH, RANGE 12 EAST, SUWANNEE COUNTY, FLORIDA.

PLAT BOOK

UNPLATTED LANDS

CURVE	DELTA	RADIUS	TANGENT	LENGTH	CHORD BEARING & DISTANCE
1	33° 00' 30"	337.34	99.95	194.34	N. 21° 35' 24" E. 191.67'
2	36° 10' 20"	306.05	99.95	193.22	N. 20° 00' 31" E. 190.02'
3	39° 04' 29"	263.61	200.00	324.37	N. 44° 05' 38" E. 376.97'
4	63° 35' 51"	322.58	200.00	358.06	N. 31° 49' 56" E. 389.96'
5	89° 48' 23"	125.42	125.00	196.58	N. 43° 05' 07" E. 177.07'
6	4° 48' 22"	408.23	155.90	297.84	N. 23° 52' 23" E. 291.28'
7	4° 45' 12"	100.92	38.49	73.54	N. 69° 06' 02" V. 71.93'

CURVE	BEARING	DISTANCE
1	S. 88° 04' 39" E.	20.00'
2	N. 48° 13' 26" V.	144.87'
3	N. 63° 37' 52" E.	196.39'
4	N. 48° 13' 26" V.	48.99'
5	N. 4° 46' 34" E.	20.00'



LOT	DELTA	RW CURVE DATA	RADIUS	TANGENT	LENGTH	CHORD BEARING & DISTANCE
2	22° 20' 33"		367.34	73.10	73.10	N. 16° 15' 27" E. 142.34'
3	07° 09' 40"		307.34	24.62	49.14	N. 07° 40' 01" E. 49.09'
5	23° 50' 50"		307.34	71.99	140.38	N. 26° 10' 16" E. 139.17'
6	36° 10' 20"		306.05	109.75	212.16	N. 20° 00' 31" E. 208.68'
6	10° 39' 57"		367.34	34.29	68.38	N. 32° 42' 38" E. 67.59'
6	36° 10' 20"		276.03	90.15	174.28	N. 20° 00' 31" E. 172.07'
16	65° 18' 19"		50.00	32.04	56.99	N. 34° 34' 31" E. 53.95'
17	114° 41' 41"		50.00	78.02	100.09	S. 55° 25' 29" E. 84.20'
18	78° 21' 47"		50.00	40.82	68.47	S. 41° 09' 14" V. 63.25'
19	114° 35' 13"		50.00	77.86	100.00	N. 68° 12' 36" E. 84.15'
20	64° 22' 36"		50.00	31.47	56.18	N. 21° 16' 24" V. 53.27'
21	61° 34' 47"		284.56	169.68	306.00	S. 31° 08' 13" E. 288.40'
22	39° 04' 29"		533.61	189.35	363.91	N. 44° 05' 38" E. 356.90'
22	63° 35' 41"		352.60	218.60	391.36	N. 31° 49' 56" E. 371.58'
23	23° 32' 20"		593.61	123.68	243.87	N. 36° 19' 33" E. 242.16'
25	13° 46' 59"		428.20	52.96	105.41	N. 34° 53' 05" E. 103.16'
30	4° 45' 12"		70.92	27.01	51.68	N. 69° 06' 02" V. 50.55'
30	15° 55' 34"		50.00	244.93	136.94	N. 48° 13' 26" V. 97.98'
31	4° 45' 12"		130.92	49.93	94.41	N. 69° 06' 02" V. 93.31'
32	30° 08' 07"		378.20	101.82	198.92	N. 33° 09' 23" E. 196.63'
33	100° 32' 10"		50.00	60.16	87.73	N. 08° 48' 20" E. 76.90'
33	16° 45' 58"		438.20	64.58	128.23	N. 17° 36' 36" E. 127.77'
33	11° 46' 38"		50.00	73.82	97.54	N. 08° 48' 20" E. 82.79'
34	07° 24' 52"		438.20	1.58	3.17	N. 00° 10' 38" E. 3.17'
35	05° 12' 39"		593.61	80.98	160.97	N. 55° 51' 47" E. 160.47'
36	58° 23' 12"		292.60	163.48	298.17	N. 61° 01' 32" E. 26.60'
41	89° 48' 23"		95.42	95.10	149.06	N. 45° 05' 06" E. 134.72'
43	102° 54' 52"		50.00	62.76	89.81	N. 01° 29' 27" V. 78.21'
44	148° 35' 53"		50.00	77.88	100.00	S. 72° 44' 04" E. 84.15'
45	08° 44' 51"		50.00	34.20	59.69	S. 18° 56' 18" V. 56.46'
47	89° 48' 23"		185.42	154.90	243.60	S. 45° 05' 07" V. 219.43'