

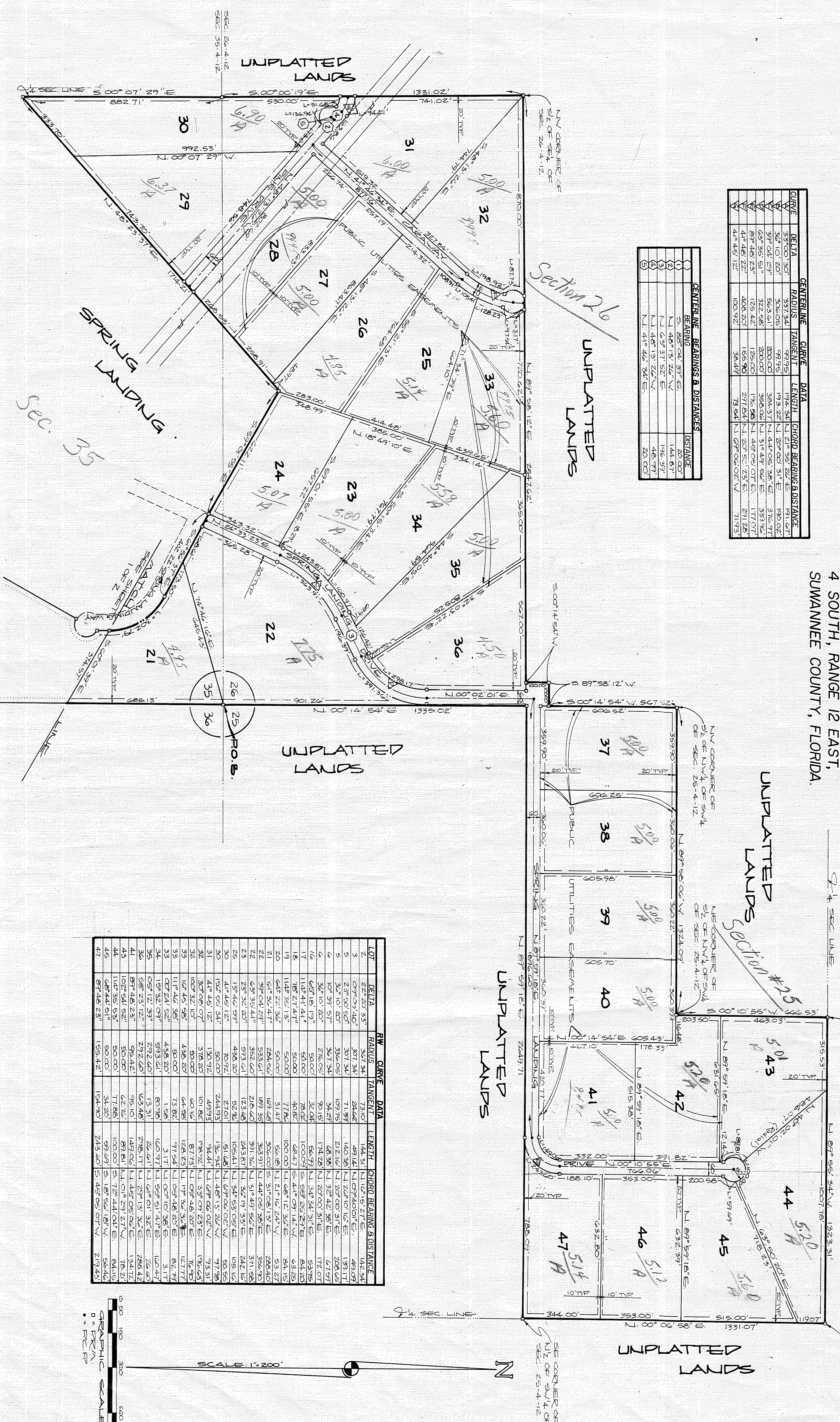
SPRING LANDING PHASE II

A SUBDIVISION OF A PORTION OF SECTIONS 25, 26, AND 35, TOWNSHIP 4 SOUTH, RANGE 12 EAST, SUWANNEE COUNTY, FLORIDA.

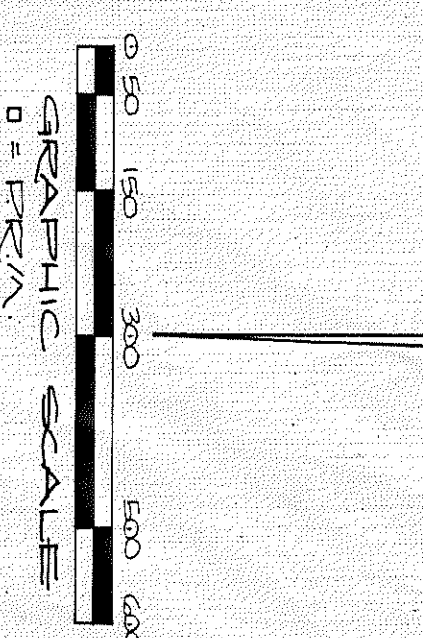
PLAT BOOK 1, PAGE 23
SHEET 2 OF 2

CENTERLINE CURVE DATA			
CURVE	DELTA	RADIUS	TANGENT
1	35°00'30"	337.34'	99.95'
2	36°10'20"	306.05'	193.22'
3	37°04'27"	563.61'	200.00'
4	63°35'51"	322.58'	380.02'
5	87°48'23"	125.42'	176.58'
6	41°45'12"	408.20'	297.84'
7		100.92'	73.54'

CENTERLINE BEARINGS & DISTANCES		
BEARING	DISTANCE	CHORD BEARING & DISTANCE
S 88°04'37" E	20.00'	191.67'
N 46°13'26" E	144.87'	190.02'
N 45°31'52" E	146.87'	376.97'
N 45°13'26" N	48.97'	337.96'
N 41°46'34" E	20.00'	177.07'
		291.28'
		71.93'



LOT	DELTA	RW. CURVE RADIUS	TANGENT	LENGTH	CHORD BEARING & DISTANCE
1	22°20'35"	367.34'	73.10'	144.31'	N 10°15'27" E 142.34'
2	07°07'40"	307.34'	24.02'	49.14'	N 07°40'01" E 49.09'
3	23°50'50"	307.34'	11.97'	140.38'	N 20°10'16" E 139.17'
4	30°10'20"	336.05'	109.75'	212.16'	N 20°00'31" E 208.65'
5	10°39'57"	367.34'	34.79'	68.36'	N 32°42'38" E 67.59'
6	36°10'20"	50.00'	27.05'	174.28'	N 20°00'31" E 172.07'
7	65°18'17"	50.00'	32.04'	56.99'	N 34°34'31" E 53.75'
8	118°41'41"	50.00'	78.02'	100.09'	S 59°25'27" E 84.25'
9	64°27'47"	50.00'	40.82'	68.47'	S 41°09'14" N 64.25'
10	114°32'13"	50.00'	77.82'	100.00'	N 68°12'34" E 84.15'
11	64°22'36"	50.00'	31.47'	56.16'	N 21°16'24" N 53.27'
12	61°34'47"	284.66'	169.48'	306.00'	S 31°08'13" E 288.40'
13	79°35'41"	189.35'	189.35'	363.91'	N 44°05'36" E 366.90'
14	69°32'41"	352.60'	218.40'	391.36'	N 31°49'54" E 371.58'
15	23°32'20"	593.61'	243.87'	743.81'	N 01°29'27" N 744.72'
16	13°41'59"	438.20'	92.32'	51.48'	N 34°53'05" E 50.55'
17	41°45'12"	70.72'	27.01'	105.41'	N 67°06'02" N 105.16'
18	154°55'34"	50.00'	244.93'	134.94'	N 48°13'26" N 97.98'
19	41°45'12"	130.72'	49.73'	34.41'	N 09°48'20" E 74.31'
20	307°08'07"	50.00'	101.82'	178.72'	N 33°09'23" E 176.90'
21	107°32'10"	50.00'	60.16'	87.73'	N 09°48'20" E 82.77'
22	107°44'56"	150.00'	64.96'	128.43'	N 17°34'34" E 127.77'
23	111°44'56"	150.00'	43.820'	97.54'	N 05°48'20" E 176.90'
24	107°24'52"	593.61'	153.31'	3.117'	N 00°10'38" E 3.17'
25	05°12'37"	292.60'	13.31'	26.41'	N 61°51'32" E 162.44'
26	58°23'12"	292.60'	123.48'	278.17'	N 27°13'32" E 286.42'
27	87°48'23"	95.42'	75.10'	149.06'	N 43°08'06" E 136.72'
28	107°54'15"	50.00'	17.85'	103.00'	S 77°24'24" E 18.21'
29	114°32'13"	50.00'	34.20'	97.69'	S 18°56'18" N 18.21'
30	87°48'23"	159.47'	159.47'	245.40'	S 45°05'07" N 219.43'



SCALE: 1" = 200'