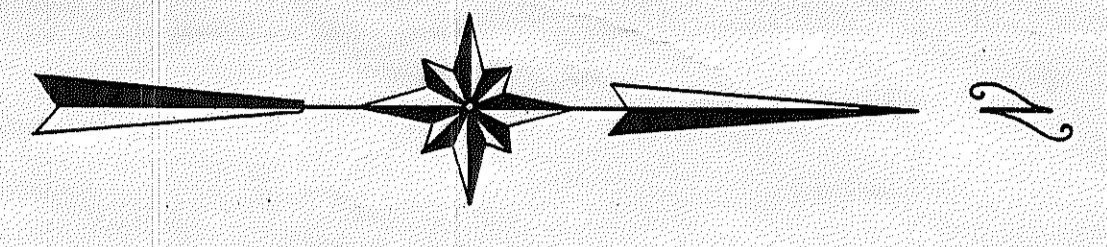


SUWANNEE RIVER PARK

SUWANNEE COUNTY, FLORIDA
SHEET 3 OF 3 SHEETS



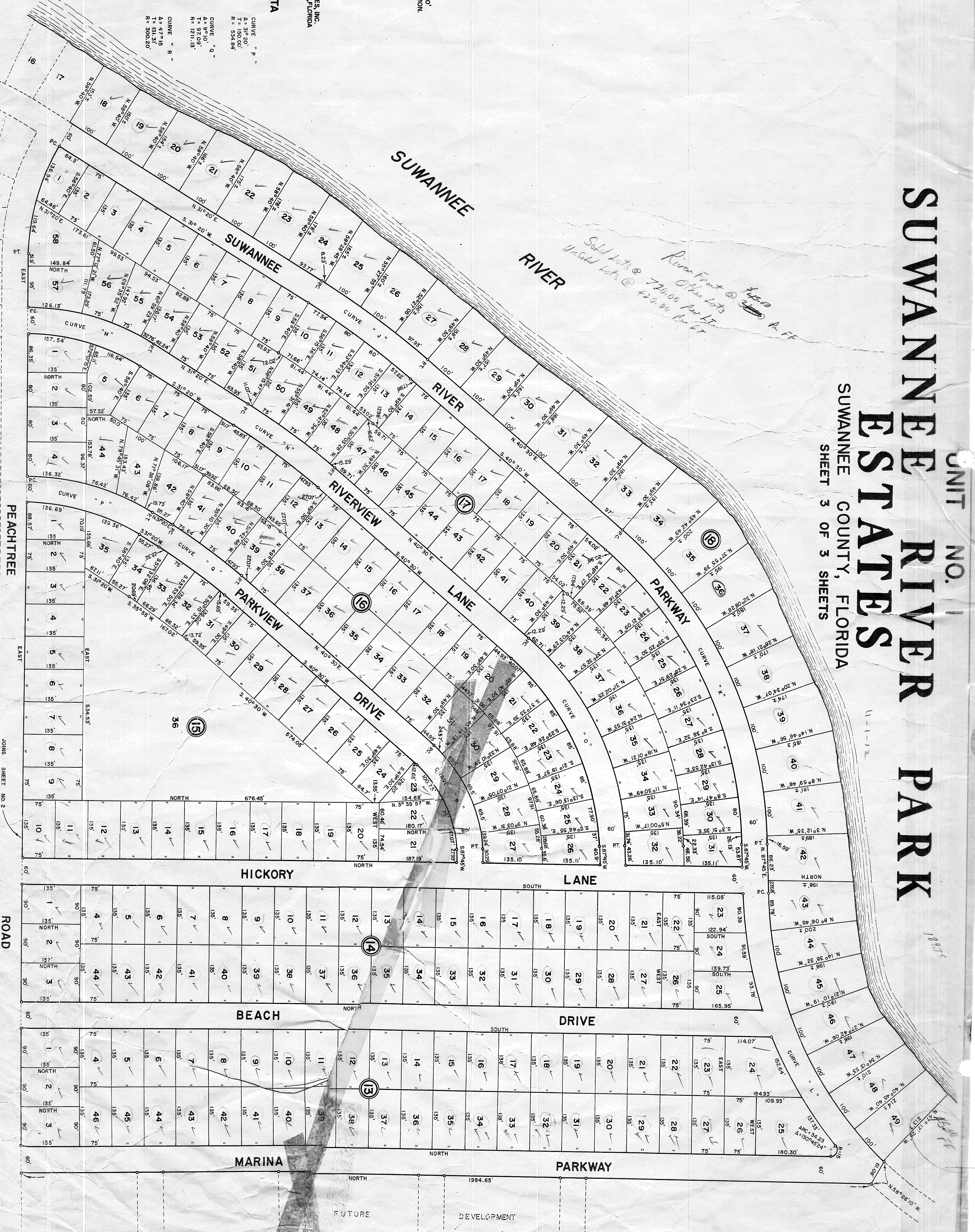
SCALE: 1" = 100'
0.4" X 4" CONC. MON.

PREPARED BY
MARION ENGINEERING ASSOCIATES, INC.
220 N. MAGNOLIA STREET, OCALA, FLORIDA
SEPT. 25, 1961

☉ CURVE DATA

CURVE "J"	A = 97.10'	T = 187.12'	R = 187.12'
CURVE "M"	A = 31.20'	T = 150.00'	R = 150.00'
CURVE "N"	A = 97.10'	T = 187.12'	R = 187.12'
CURVE "O"	A = 47.15'	T = 276.65'	R = 530.20'
CURVE "P"	A = 31.20'	T = 150.00'	R = 150.00'
CURVE "Q"	A = 97.10'	T = 187.12'	R = 187.12'
CURVE "R"	A = 47.15'	T = 276.65'	R = 530.20'
CURVE "S"	A = 31.20'	T = 150.00'	R = 150.00'
CURVE "T"	A = 97.10'	T = 187.12'	R = 187.12'
CURVE "U"	A = 47.15'	T = 276.65'	R = 530.20'
CURVE "V"	A = 31.20'	T = 150.00'	R = 150.00'
CURVE "W"	A = 97.10'	T = 187.12'	R = 187.12'
CURVE "X"	A = 47.15'	T = 276.65'	R = 530.20'
CURVE "Y"	A = 31.20'	T = 150.00'	R = 150.00'
CURVE "Z"	A = 97.10'	T = 187.12'	R = 187.12'

NOTE:
ALL DISTANCES SHOWN ALONG CURVED
LINES ARE ARC DISTANCES.



*Sold Lots @ 720.00 per lot
Unsold Lots @ 420.00 per lot*

*River Front @ 450
Other Lots @ 500*

11-1-12

1897

FUTURE DEVELOPMENT