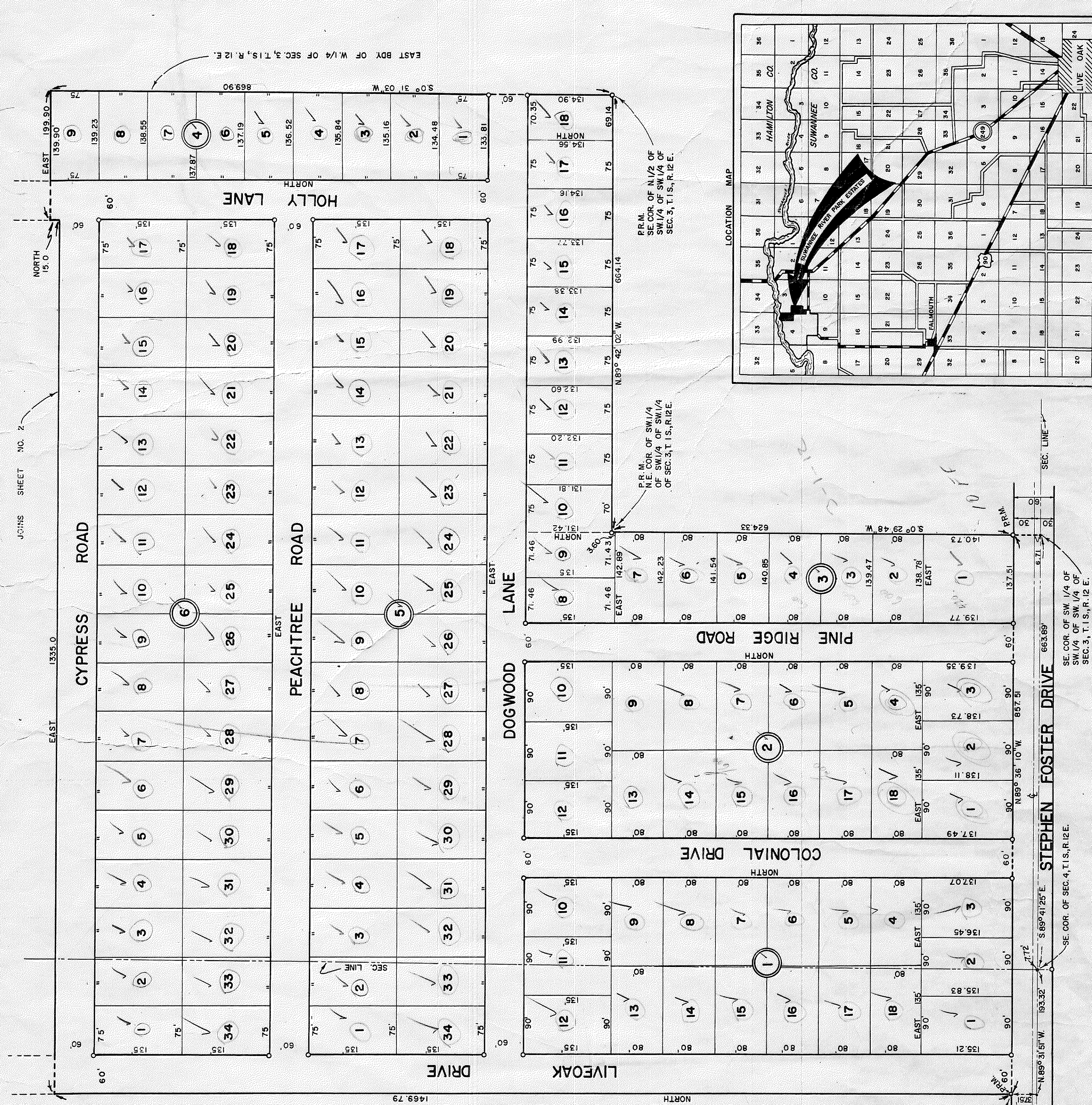


Unit 2 1 of 3

SUWANNEE RIVER PARK ESTATES

UNIT NO. 2 SUWANNEE COUNTY, FLORIDA

DESCRIPTION: A PORTION OF SECTIONS 3 AND 4, TOWNSHIP 1 SOUTH, RANGE 12 EAST, SUWANNEE COUNTY, FLORIDA, BEING MORE PARTICULARLY DESCRIBED AS FOLLOWS: COMMENCING AT THE SE. CORNER OF SECTION 4, TOWNSHIP 1 SOUTH, RANGE 12 EAST, THENCE N. 89° 31' 51" W. ALONG THE SOUTH BOUNDARY OF SAID SECTION 4, THENCE NORTH 375.1 FT. TO A POINT ON THE NORTH RIGHT OF WAY LINE OF STEPHEN FOSTER DRIVE FOR THE POINT OF BEGINNING; THENCE NORTH 2439.06 FT.; THENCE WEST 1054.28 FT.; THENCE NORTH 1024.37 FT.; THENCE N. 12° 57' 02" W. 671.7 FT.; THENCE N. 13° 46' 01" E. 197 FT. MORE OR LESS TO THE WATERS EDGE OF THE SUWANNEE RIVER; THENCE SOUTHEASTERLY AND NORTHEASTERLY ALONG AND WITH THE WATERS EDGE OF SAID RIVER TO AN INTERSECTION WITH THE EAST BOUNDARY OF SECTION 4, TOWNSHIP 1 SOUTH, RANGE 12 EAST; THENCE S. 0° 30' 28" W. ALONG SAID EAST BOUNDARY 1433 FT. MORE OR LESS TO THE NW CORNER OF THE SW 1/4 OF SECTION 3, TOWNSHIP 1 SOUTH, RANGE 12 EAST; THENCE S. 89° 43' 52" E. 1529.72 FT. TO THE NE. CORNER OF THE NW 1/4 OF SAID SECTION 3; THENCE S. 0° 31' 03" W. ALONG THE EAST BOUNDARY OF SAID NW 1/4 OF SECTION 3, THENCE N. 17° 20' 00" E. 1983.46 FT. TO THE SE. CORNER OF THE N. 1/2 OF SW 1/4 OF SAID SECTION 3; THENCE N. 89° 43' 52" E. 1529.72 FT. TO THE NE. CORNER OF THE NW 1/4 OF SAID SECTION 3; THENCE S. 0° 31' 03" W. ALONG THE SOUTH BOUNDARY OF SAID NW 1/4 OF SECTION 3, THENCE N. 17° 20' 00" E. 1983.46 FT. TO THE SE. CORNER OF THE N. 1/2 OF SW 1/4 OF SAID SECTION 3; THENCE S. 0° 29' 48" W. ALONG THE EAST BOUNDARY OF SAID NW 1/4 OF SECTION 3, THENCE S. 89° 43' 52" E. 1529.72 FT. TO THE POINT OF BEGINNING.



**STATE OF FLORIDA
COUNTY OF MARION**

THE UNDERSIGNED CORPORATION, WHICH IS DULY ORGANIZED UNDER THE LAWS OF THE STATE OF FLORIDA AND THE OWNER OF THE REAL ESTATE INCLUDED IN THIS PLAT DOES HEREBY AUTHORIZE THE SAME TO BE RECORDED IN THE PUBLIC RECORDS SUWANNEE COUNTY, FLORIDA AND DOES HEREBY DEDICATE TO THE PUBLIC, FOREVER, THE STREETS SHOWN HEREON.

WITNESS WHEREOF SAID CORPORATION HAS CAUSED ITS SEAL TO BE AFFIXED BY THE UNDERSIGNED OFFICIALS, DULY AUTHORIZED BY THE BOARD OF DIRECTORS, THIS 17th DAY OF January A. D. 1962

SIGNED, SEALED AND DELIVERED IN THE PRESENCE OF

WITNESSES
 William C. Bell
 Edward L. Wood

WILLIAM C. BELL
VICE PRESIDENT
 EDWARD L. WOOD
SECRETARY

SUWANNEE RIVER HOMESITES, INC.

**STATE OF FLORIDA
COUNTY OF MARION**

BEFORE ME THIS DAY, PERSONALLY APPEARED WILLIAM MOORE AND EDMOND L. WOOD, VICE PRESIDENT AND SECRETARY RESPECTIVELY, OF SUWANNEE RIVER HOMESITES, INC., A FLORIDA CORPORATION, AND ACKNOWLEDGED BEFORE ME THAT THEY EXECUTED THE DEDICATION HEREON SHOWN FOR THE USES AND PURPOSES THEREIN STATED ON BEHALF OF SAID SUWANNEE RIVER HOMESITES, INC. AS ITS FREE ACT AND DEED AND HAVE BEEN DULY JET-PROCESSED SO TO DO BY THE BOARD OF DIRECTORS THEREOF.

WITNESS MY HAND AND OFFICIAL SEAL AT OCALA, COUNTY OF MARION, STATE OF FLORIDA, THIS 17th DAY OF January A. D. 1962.

MY COMMISSION EXPIRES August 15, 1963

E. J. Langan
NOTARY PUBLIC, STATE OF FLORIDA, AT LARGE

I, J. W. JERIGAN, OF THE MARION ENGINEERING ASSOCIATES, INC. MAKER OF THIS PLAT DO HEREBY CERTIFY THAT IT IS A CORRECT REPRESENTATION OF THE LAND PLATTED AND THAT PERMANENT REFERENCE MONUMENTS, HAVE BEEN PLACED THEREON AS CALLED FOR UNDER CHAPTER 177, FLORIDA STATUTES.

J. W. JERIGAN
REGISTERED LAND SURVEYOR
CERTIFICATE NO. 341, STATE OF FLORIDA

THIS CERTIFIES THAT THIS PLAT WAS PRESENTED TO THE BOARD OF COUNTY COMMISSIONERS OF SUWANNEE COUNTY, FLORIDA AND APPROVED BY THEM FOR RECORD ON THE 17th DAY OF January A. D. 1962.

ATTEST:
 Leonard G. Stansel
 CHAIRMAN
 Clerk of the Circuit Court

I, LAVAURN A. JERIGAN, CLERK OF CIRCUIT COURT OF SUWANNEE COUNTY, FLORIDA, DO HEREBY CERTIFY THAT THIS FOREGOING PLAT CONFORMS TO THE PROVISIONS OF CHAPTER 177, FLORIDA STATUTES, AND WAS FILED IN MY OFFICE FOR RECORD ON THE 17th DAY OF January A. D. 1962 AND RECORDED IN THE PUBLIC RECORDS OF SAID COUNTY ON THE 17th DAY OF January A. D. 1962 IN PLAT BOOK 1 PAGE 120.

PREPARED BY
 MARION ENGINEERING ASSOCIATES, INC.
 220 N. MAGNOLIA ST.
 OCALA, FLORIDA
 JANUARY, 1962

On Computer Mapping