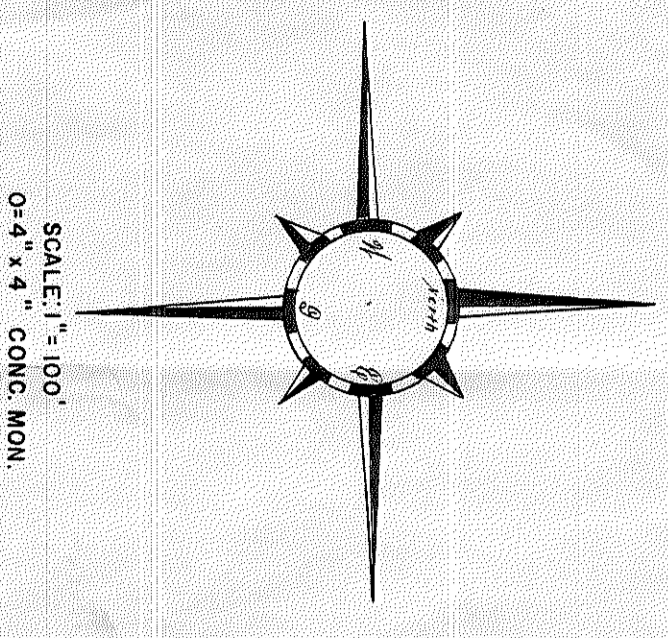
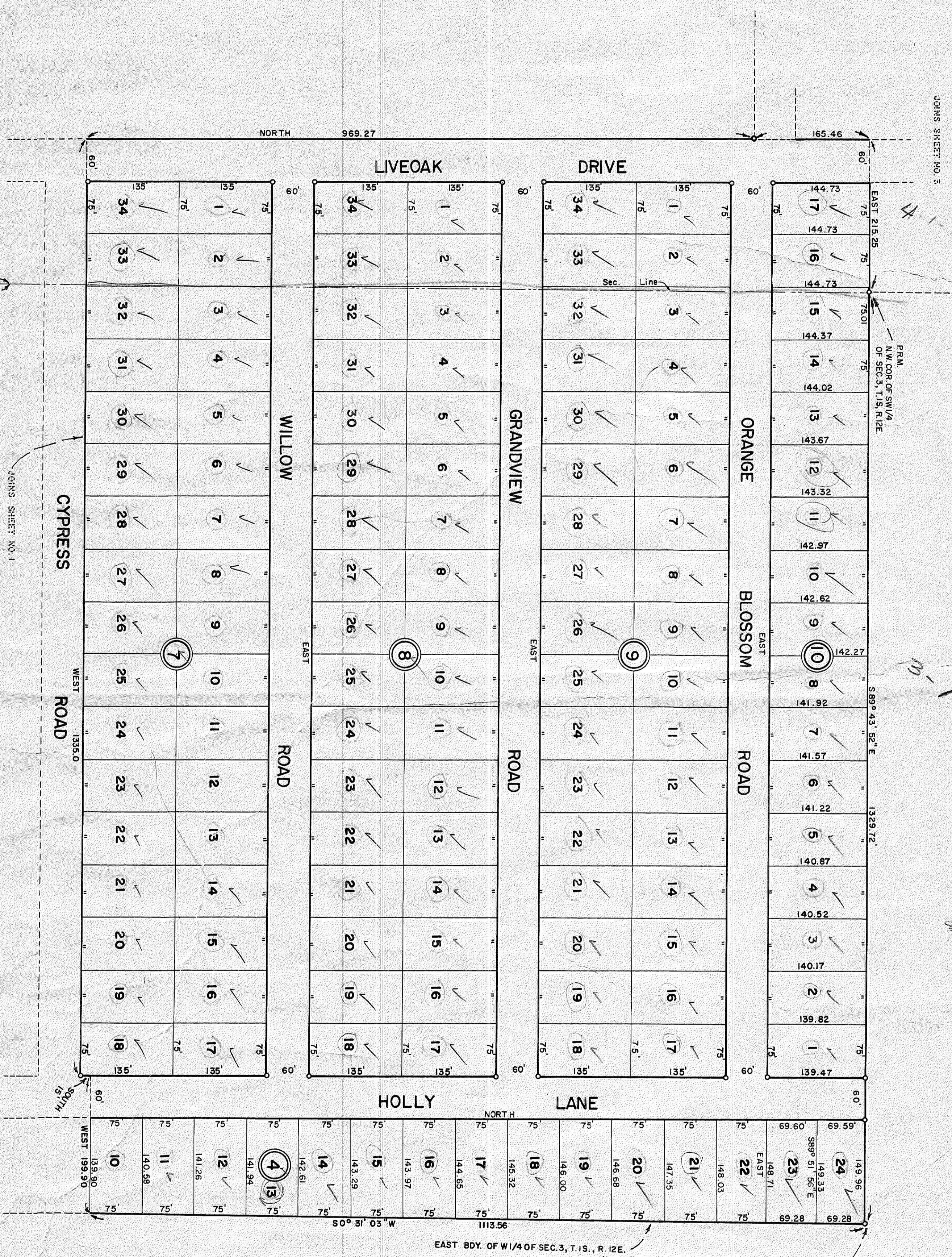


SUWANNEE COUNTY, FLORIDA
UNITS NO. 2

Sold - 120,000
1220.00



SCALE: 1" = 100'
0-4" x 4" CONC. MON.



E. BDY. SEC. 4
W. BDY. SEC. 3

JOHNS SHEET NO. 1

P.M.
N.W. COR. OF SW 1/4
OF SEC. 3, T. 15 S., R. 12 E.

S. 89° 43' 30" E.

1329.72'

P.M.
N.E. COR. OF SW 1/4
SEC. 3, T. 15 S., R. 12 E.

EAST BDY. OF W 1/4 OF SEC. 3, T. 15 S., R. 12 E.

ON
Gutter
Notation

PREPARED BY
MARION ENGINEERING ASSOCIATES, INC.
220 N. MAGNOLIA ST.
OCALA, FLORIDA
JANUARY, 1962

PAGE 21 (E)

R 34
99 J