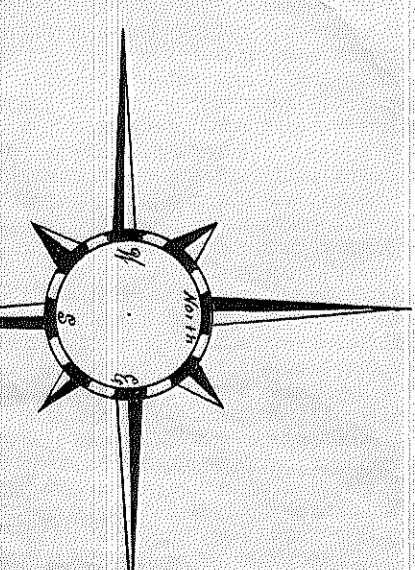
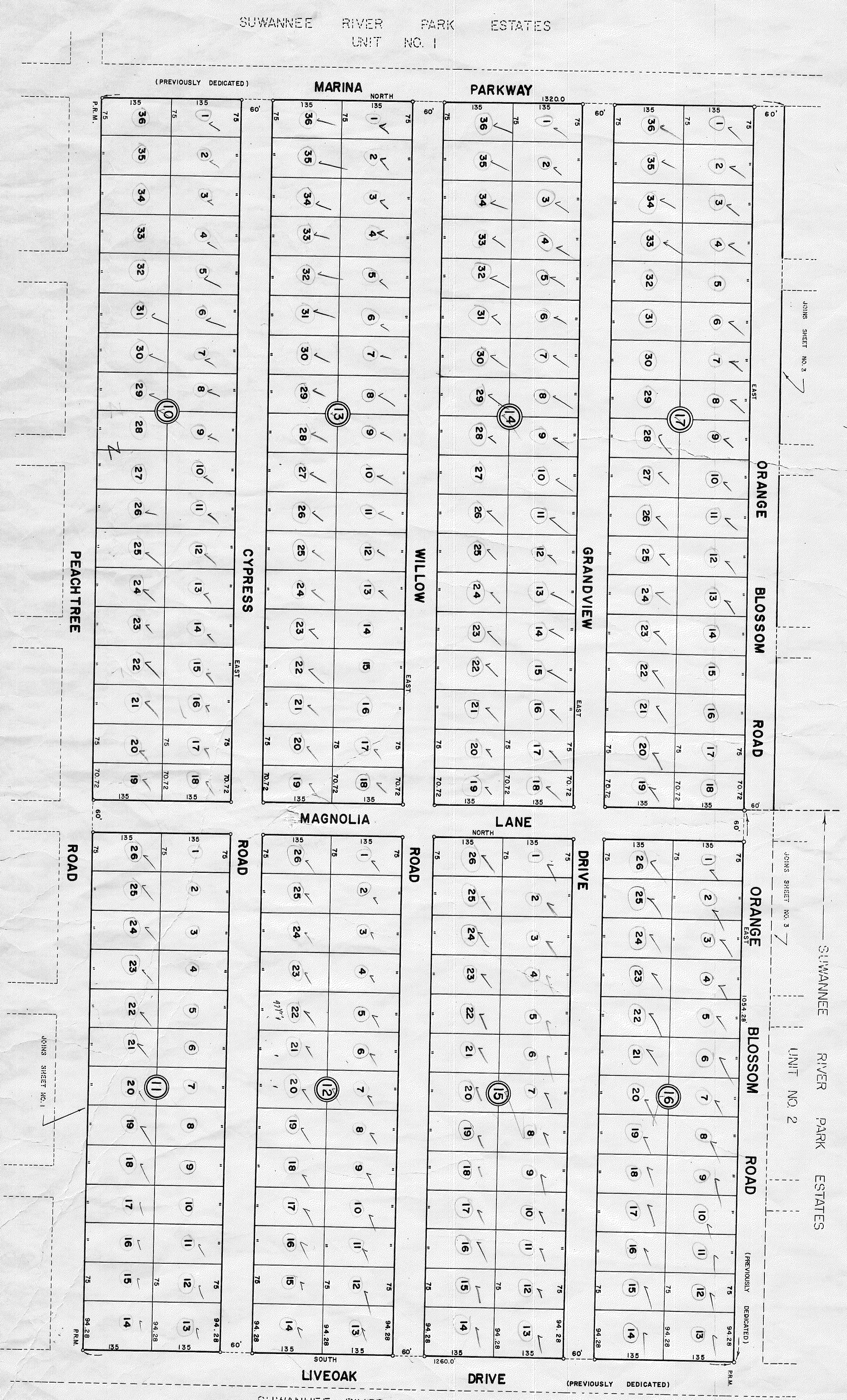


SUWANNEE RIVER PARK ESTATES

UNIT NO. 3

SUWANNEE COUNTY, FLORIDA
SHEET 2 OF 3 SHEETS



SCALE: 1" = 100'
0" = 4" = 4" CONC. MON.

PREPARED BY
MARON ENGINEERING ASSOCIATES, INC.
220 N. MAGNOLIA ST.
OCALA, FLORIDA
JANUARY, 1962

SUWANNEE RIVER PARK ESTATES
UNIT NO. 2

ME 84 (H) R-24