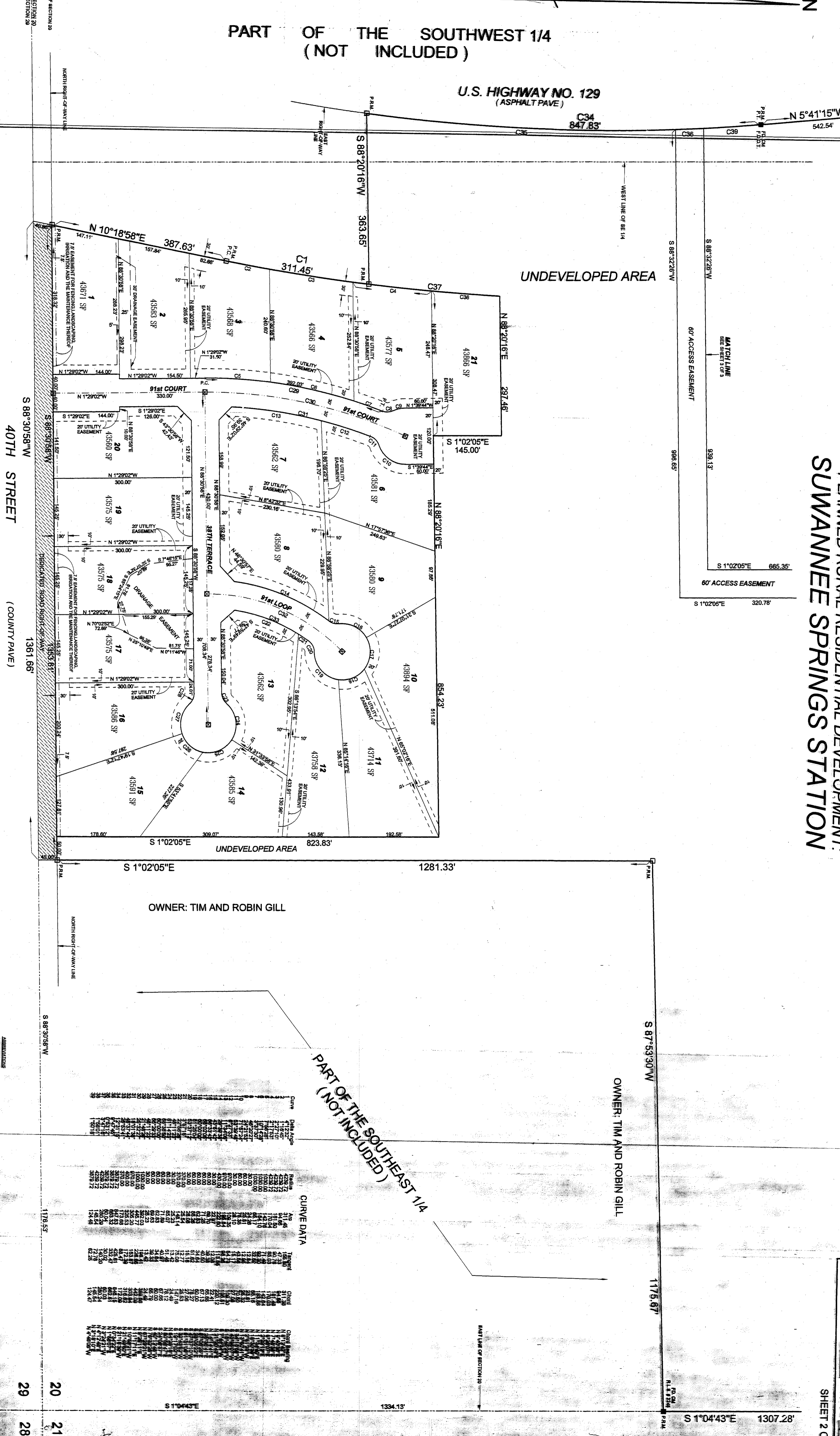


PLANNED RURAL RESIDENTIAL DEVELOPMENT:
SUWANNEE SPRINGS STATION

PART OF THE SOUTHWEST 1/4
 (NOT INCLUDED)

U.S. HIGHWAY NO. 129
 (ASPHALT PAVE)

UNDEVELOPED AREA



OWNER: TIM AND ROBIN GILL

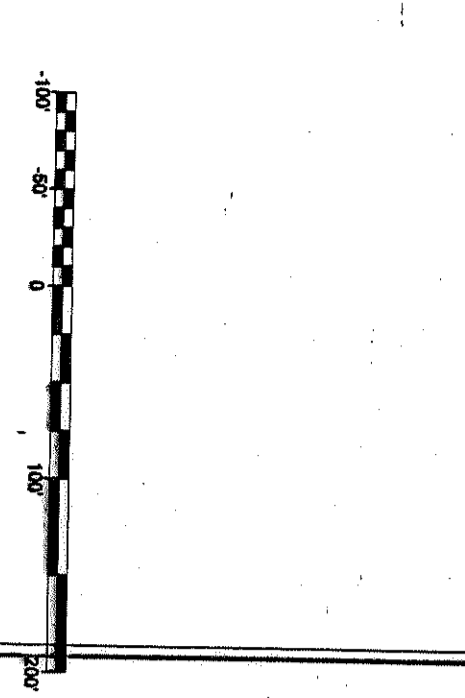
OWNER: TIM AND ROBIN GILL

PART OF THE SOUTHWEST 1/4
 (NOT INCLUDED)

OWNER: SUWANNEE RIVER WATER MANAGEMENT DISTRICT

CURVE DATA

Curve	Radius	Area	Length	Chord
1	118.53	4282.72	118.53	118.53
2	118.53	4282.72	118.53	118.53
3	118.53	4282.72	118.53	118.53
4	118.53	4282.72	118.53	118.53
5	118.53	4282.72	118.53	118.53
6	118.53	4282.72	118.53	118.53
7	118.53	4282.72	118.53	118.53
8	118.53	4282.72	118.53	118.53
9	118.53	4282.72	118.53	118.53
10	118.53	4282.72	118.53	118.53
11	118.53	4282.72	118.53	118.53
12	118.53	4282.72	118.53	118.53
13	118.53	4282.72	118.53	118.53
14	118.53	4282.72	118.53	118.53
15	118.53	4282.72	118.53	118.53
16	118.53	4282.72	118.53	118.53
17	118.53	4282.72	118.53	118.53
18	118.53	4282.72	118.53	118.53
19	118.53	4282.72	118.53	118.53
20	118.53	4282.72	118.53	118.53
21	118.53	4282.72	118.53	118.53



THIS SURVEY, MAP, PLAN, SPECIFICATION, CONTRACT, AGREEMENT, OR INSTRUMENT IS SET FORTH BY THE FLORIDA BOARD OF SURVEYORS IN CHAPTER 817.01, FLORIDA ADMINISTRATIVE CODE, PURSUANT TO SECTION 472.01, FLORIDA STATUTES.

NOT VALID WITHOUT THE SIGNATURE AND SEAL OF A FLORIDA LICENSED SURVEYOR AND THE SIGNATURE AND SEAL OF THE COUNTY CLERK.

DATE SURVEYED: 11/15/2011

