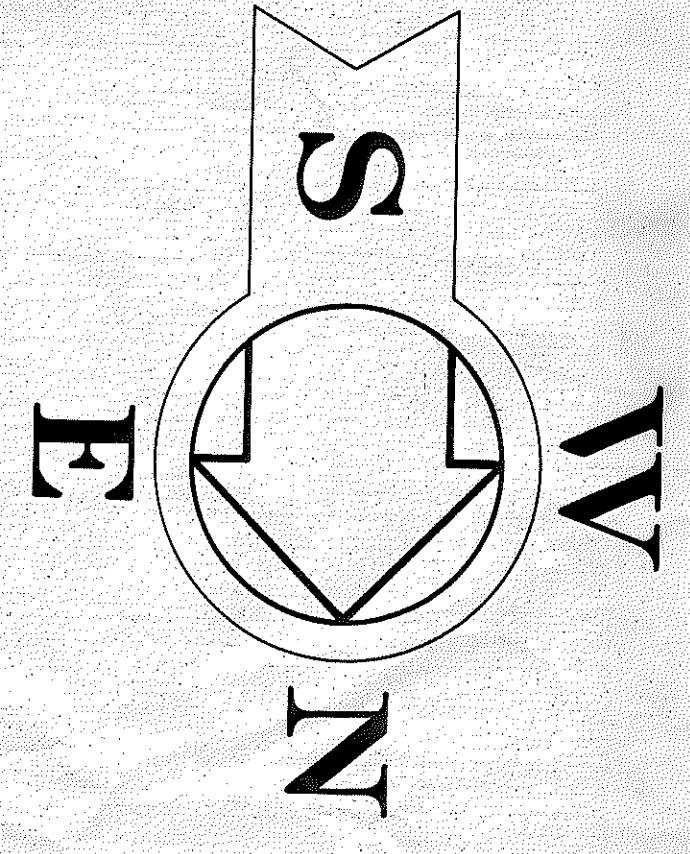
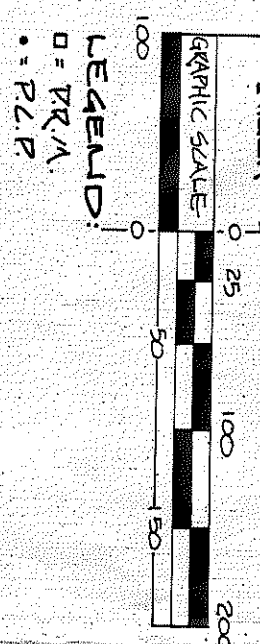
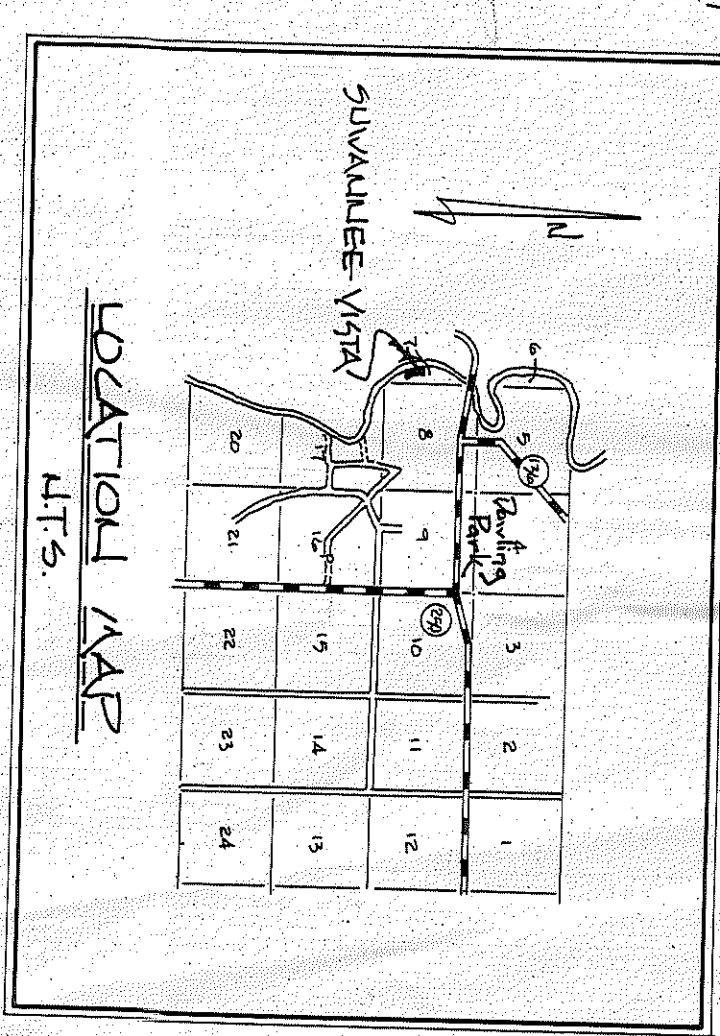
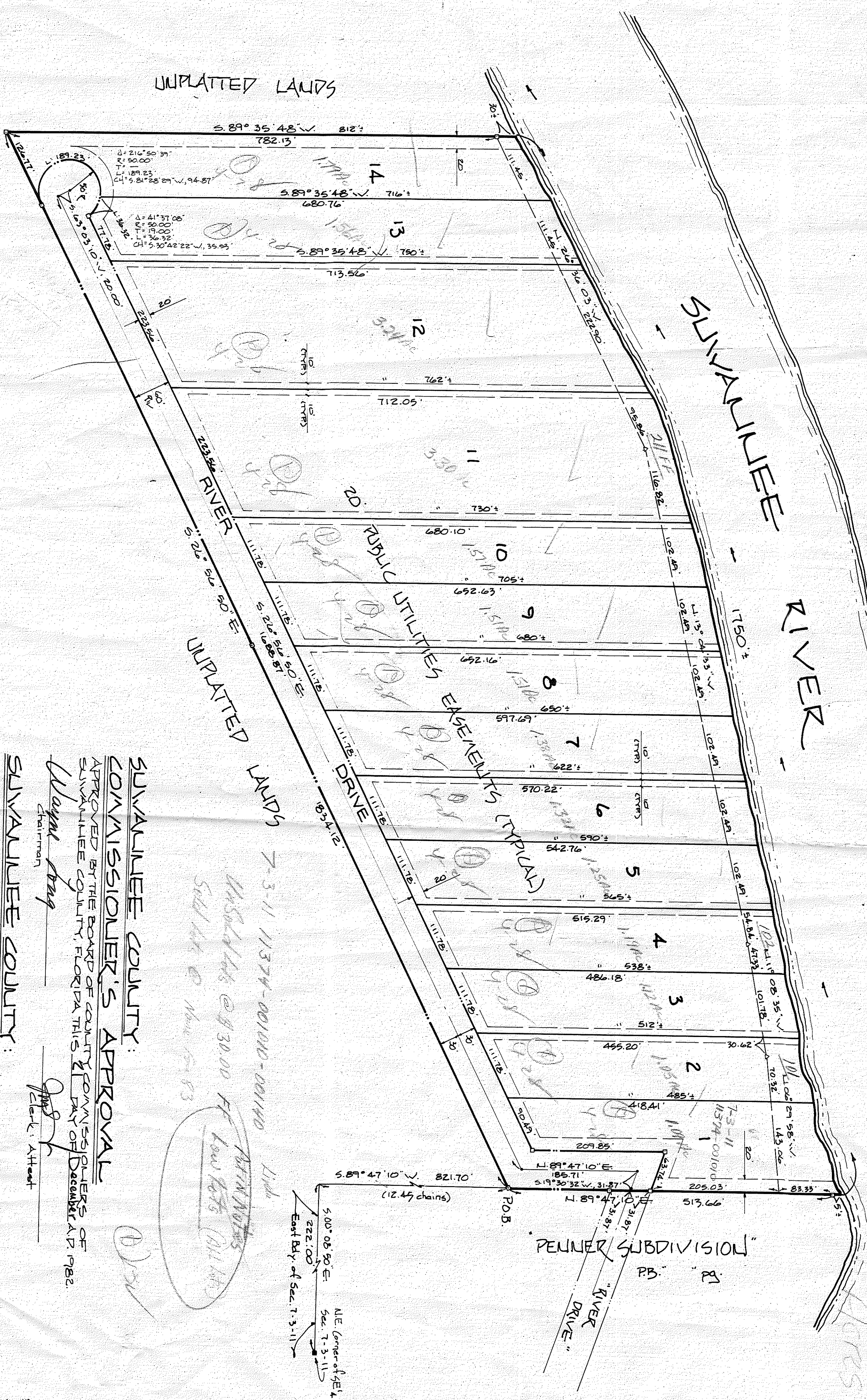


# SUWANNEE VISTA

A SUBDIVISION IN SECTION 7, TOWNSHIP 3 SOUTH, RANGE 11 EAST, SUWANNEE COUNTY, FLORIDA



1) BEARINGS SHOWN HEREON ARE BASED ON A SURVEY BY J.P. SQUIGGS  
 2) ERROR OF CLOSURE PRIOR TO ADJUSTMENT BY COMPOUND RULE WAS 1/30,000



**LEGAL DESCRIPTION**  
 A PORTION OF SECTION 7, TOWNSHIP 3 SOUTH, RANGE 11 EAST, SUWANNEE COUNTY, FLORIDA, BEING MORE PARTICULARLY DES-  
 CRIED AS FOLLOWS:  
 COMMENCE AT THE NORTHEAST CORNER OF THE SOUTHEAST ONE QUARTER OF SAID SECTION AND RUN THENCE S 00° 05' 30\"/>

**ADOPTION AND DEDICATION**  
 KNOW ALL MEN BY THESE PRESENTS THAT JOHNSON AND JOHNSON LANDS, INC. FOR THE REASONS HEREIN SET FORTH, DO HEREBY CERTIFY THAT IT IS THE OWNER OF THE HEREIN DESCRIBED LANDS AND THAT THE PUBLIC RECORD HEREIN DEDICATE TO THE PUBLIC FOREVER THE ROAD AND EASEMENTS AS SHOWN ON THIS PLAT OF SUWANNEE VISTA.  
 W. M. Johnson, Jr., President  
 Dorothy M. Johnson, Secretary  
 Witness: *[Signature]*  
 Witness: *[Signature]*

**ACKNOWLEDGEMENT**  
 STATE OF FLORIDA, COUNTY OF SUWANNEE  
 THE FOREGOING INSTRUMENT WAS ACKNOWLEDGED BEFORE ME THIS 21<sup>ST</sup> DAY OF FEBRUARY, 1982, BY JOHNSON AND JOHNSON LANDS, INC., A FLORIDA CORPORATION, AND DOROTHY M. JOHNSON, A NATURAL PERSON, IN THE PRESENCE OF ME, A Notary Public, State of Florida.  
 My Commission Expires 4-16-82

**SUWANNEE COUNTY COMMISSIONER'S APPROVAL**  
 APPROVED BY THE BOARD OF COUNTY COMMISSIONERS OF SUWANNEE COUNTY, FLORIDA THIS 21<sup>ST</sup> DAY OF FEBRUARY 1982.  
*[Signature]*  
 Chairman  
*[Signature]*  
 Clerk

**SURVEYOR'S CERTIFICATE**  
 I DO HEREBY CERTIFY THAT THIS PLAT OF SUWANNEE VISTA IS A TRUE AND CORRECT REPRESENTATION OF THE HEREON DESCRIBED LANDS ACCORDING TO A SURVEY MADE UNDER MY RESPECTABLE DIRECTION AND SUPERVISION AND THAT THE PUBLIC RECORD HEREIN DEDICATE TO THE PUBLIC FOREVER THE ROAD AND EASEMENTS AS SHOWN ON THIS PLAT OF SUWANNEE VISTA.  
 My Commission Expires 4-16-82  
 Registered Professional Land Surveyor No. 1824  
*[Signature]*  
 Clerk