

Lots 19, 20, 21, 22, 23, 30 AT 1200 P.E.
 These lots have a Power Line
 411 Other H.A.C. & 4 up of 2000 P.E.
 Lots 1-54 8-12 AT 30.00 P.E.
 Lot 647 Power Line 119,000 P.E.
 Lot 13, 14 AT 12500 P.E. 1989 map
 1989 map
 4-4-30

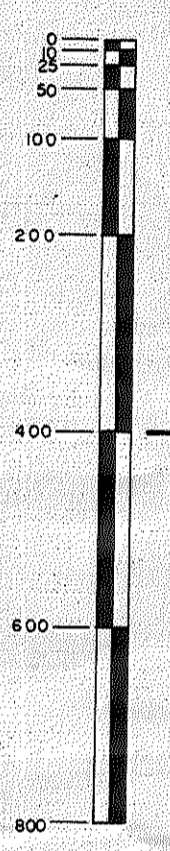
Situated in Sections 20 and 29, Township 4 South, Range 14 East,
 Suwannee County, Florida.

THE SADDLE CLUB

PLATBOOK 1 PAGE 299
 SHEET 2 OF 2



SCALE: 1" = 200'



3232-010010

MAF,
 Keylee
 5-8-90

UNPLATTED LANDS

UNPLATTED LANDS

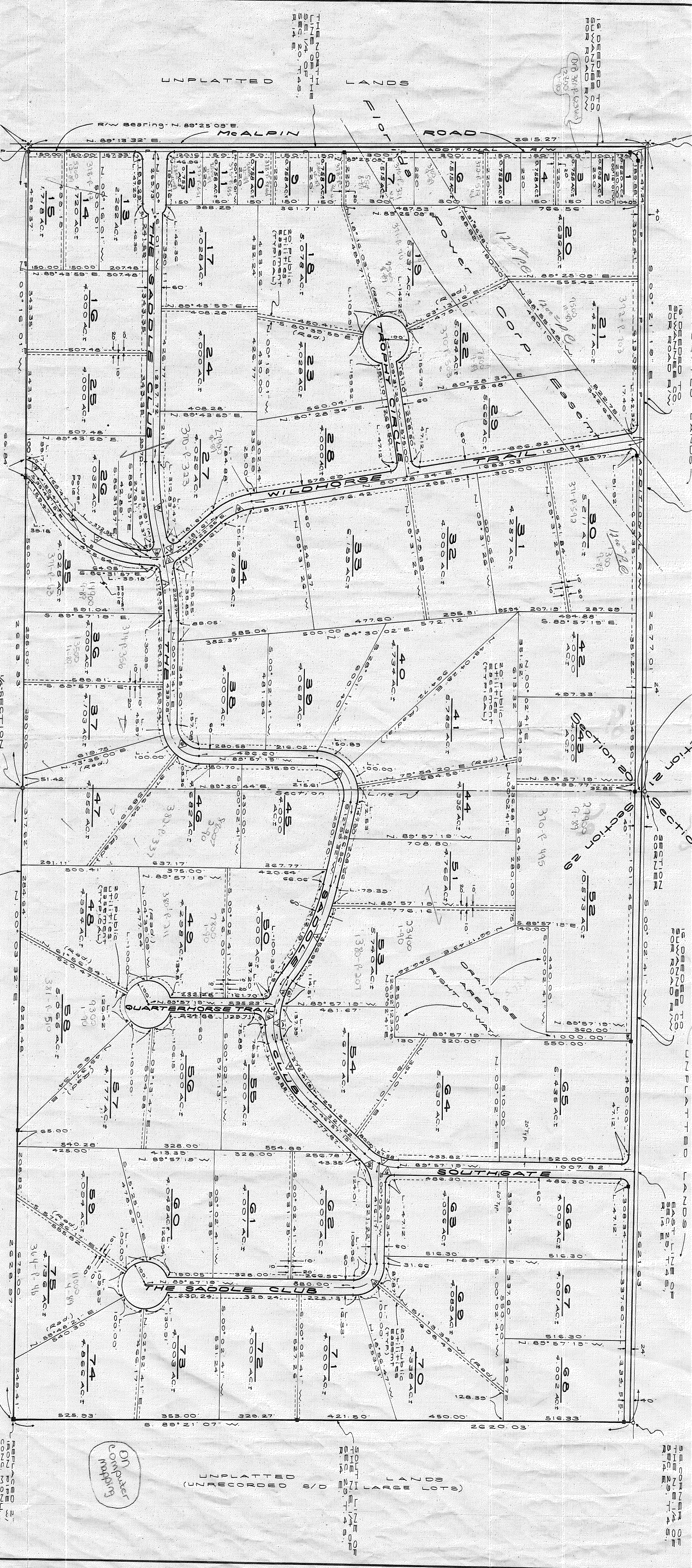
UNPLATTED LANDS

UNPLATTED LANDS

UNPLATTED LANDS

UNPLATTED LANDS

- LEGEND**
- Indicates 20' Public Utilities easement
 - Permanent Reference Monument (P.R.M.) set
 - Permanent Control Point (P.C.P.) set
 - P.C.P. nail & P.R.M. cap set
 - Iron nail found
 - Iron pipe found (2")
 - Existing Suwannee Valley also overlaid line (existing 20' easement, 10' on each side of existing P-line)
 - NOTE: Bearings shown hereon are based on North
 - NOTE: Bearings observation and refer to true North
 - 3) There will be a 20' Public Utilities easement shown, and adjacent tracts overlaid along st. lines
 - raw field closure: 1:16,739.



ORDERED
 CONVEYED
 3/14/90

RECORDED
 3/14/90
 CONC. 15001