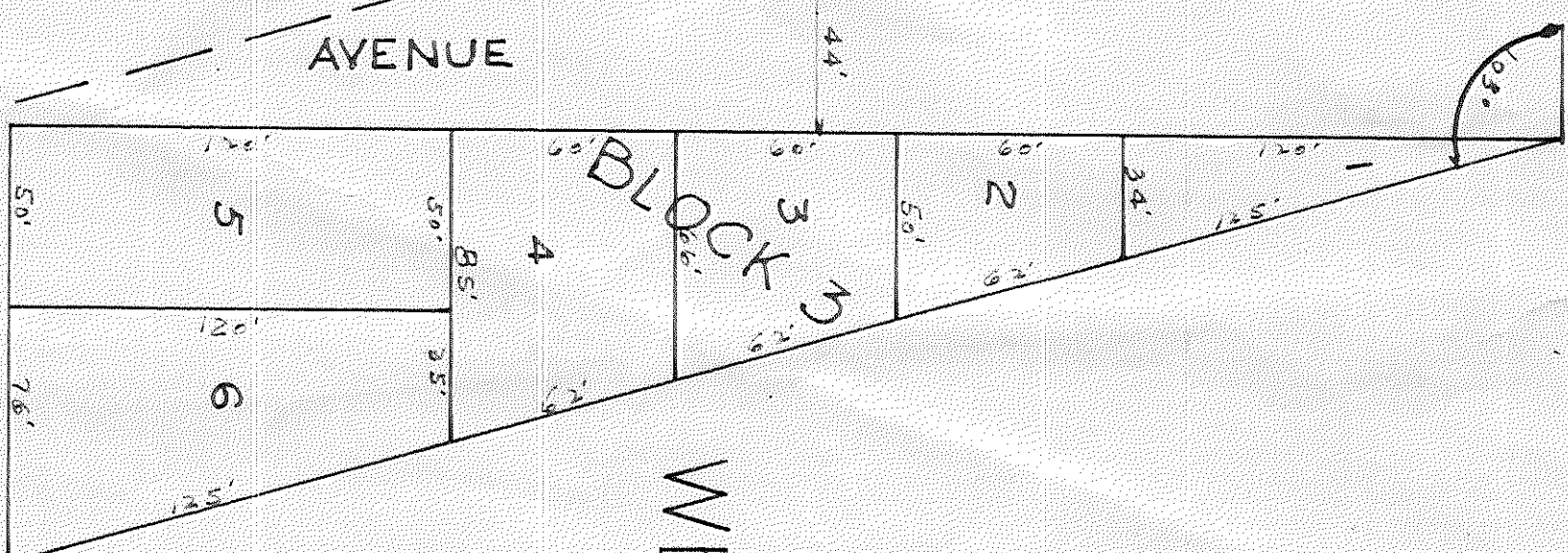
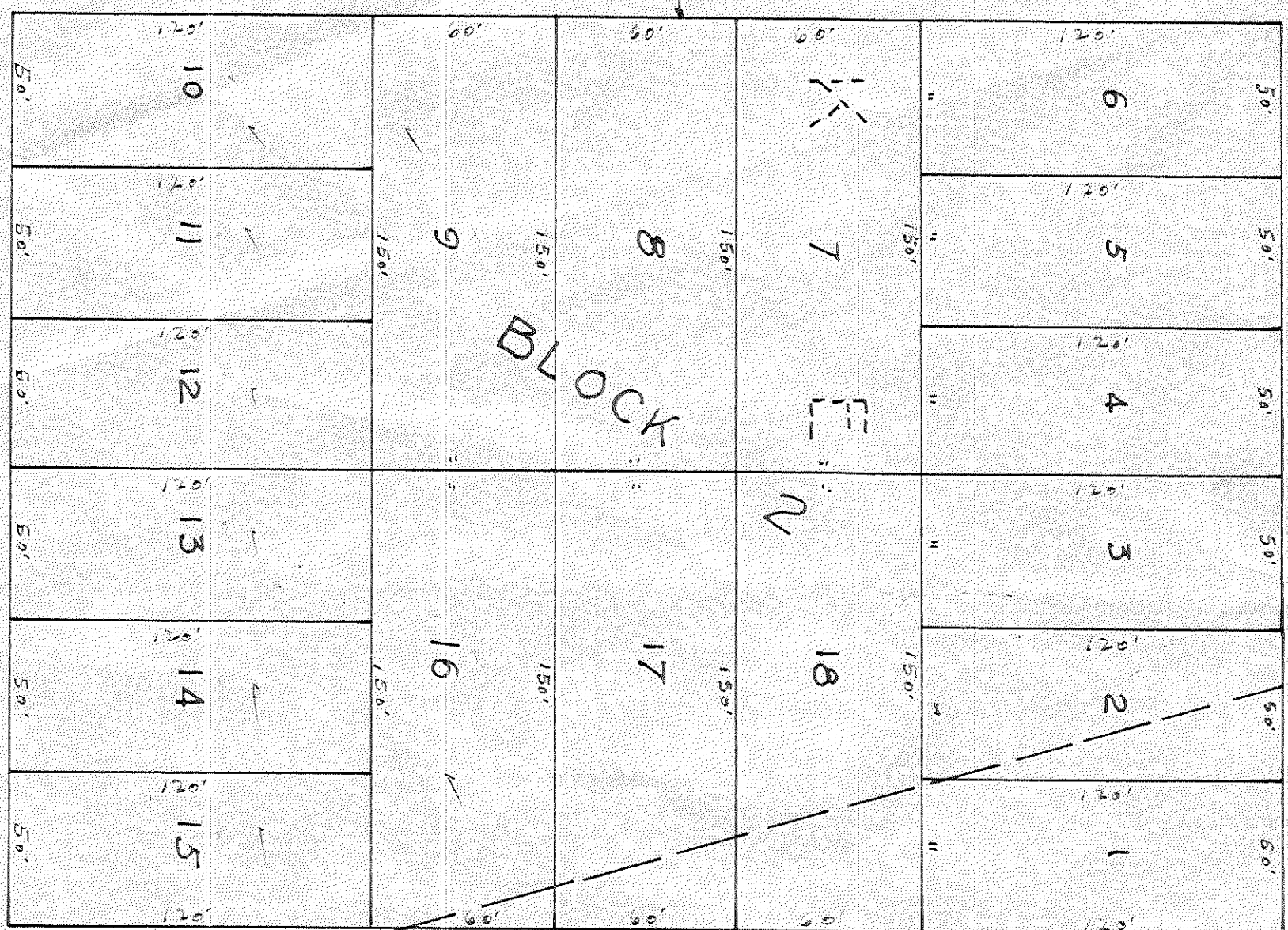
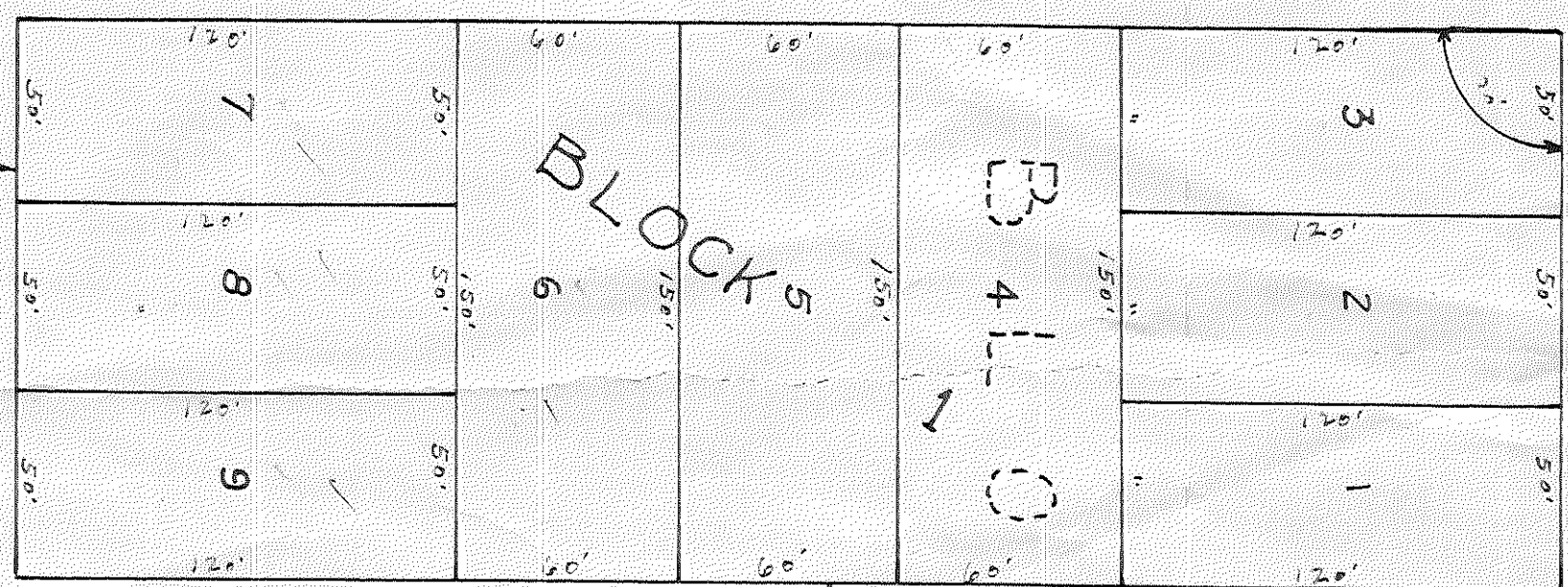


RAILROAD AVENUE

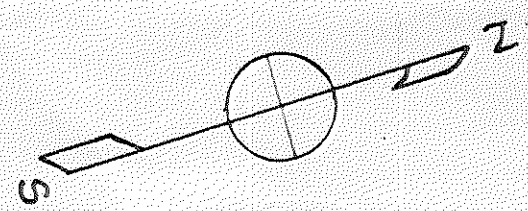
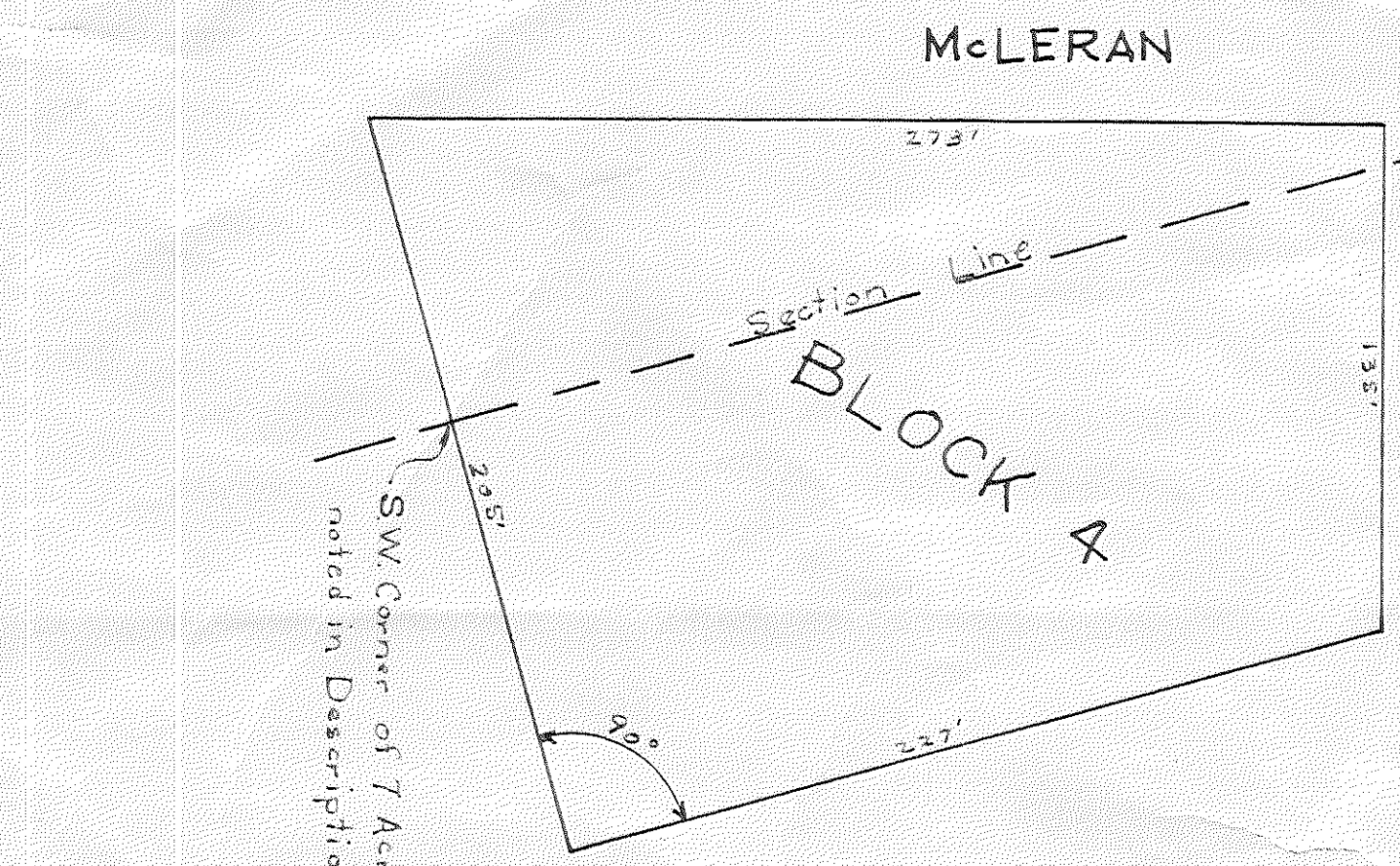
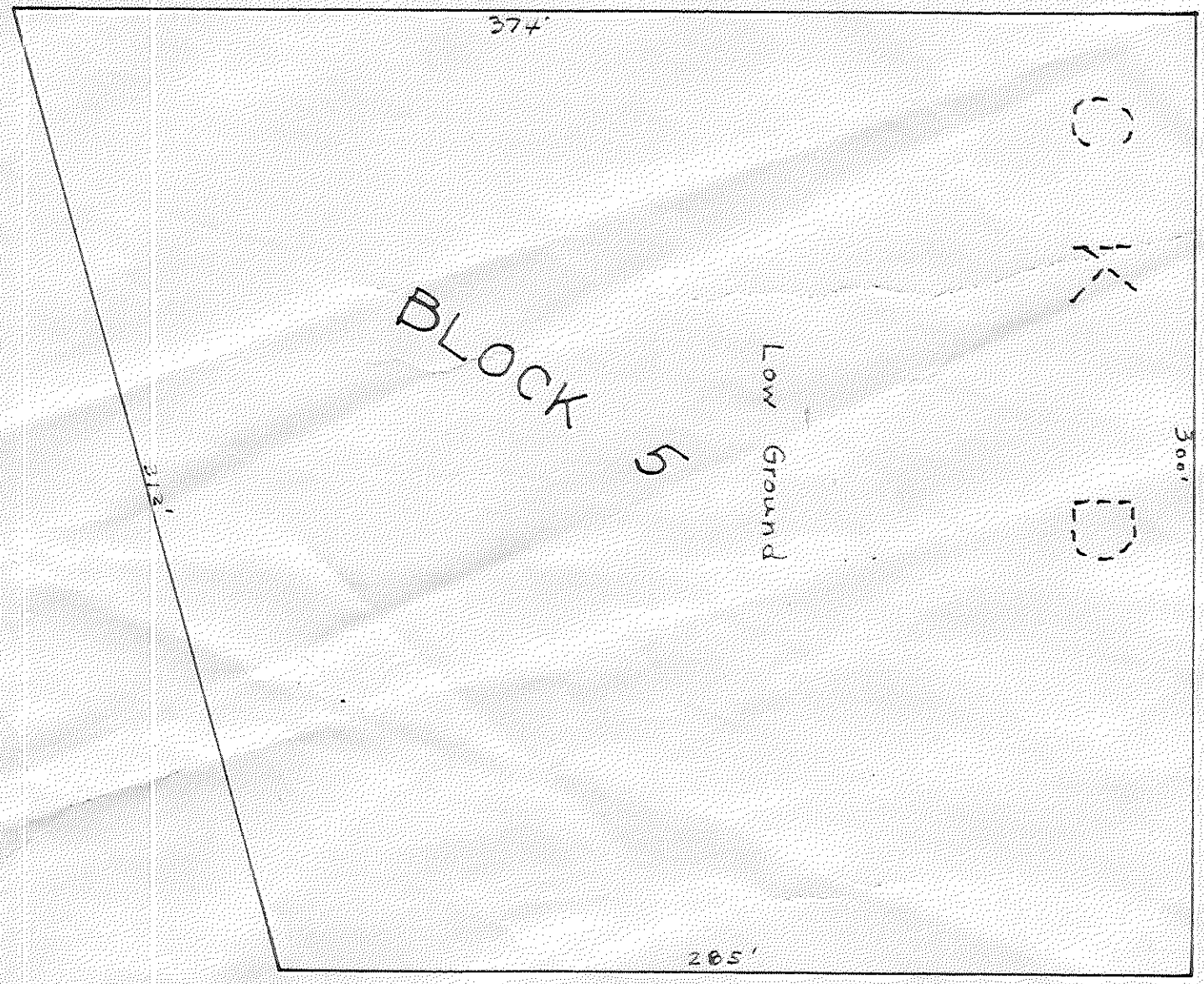
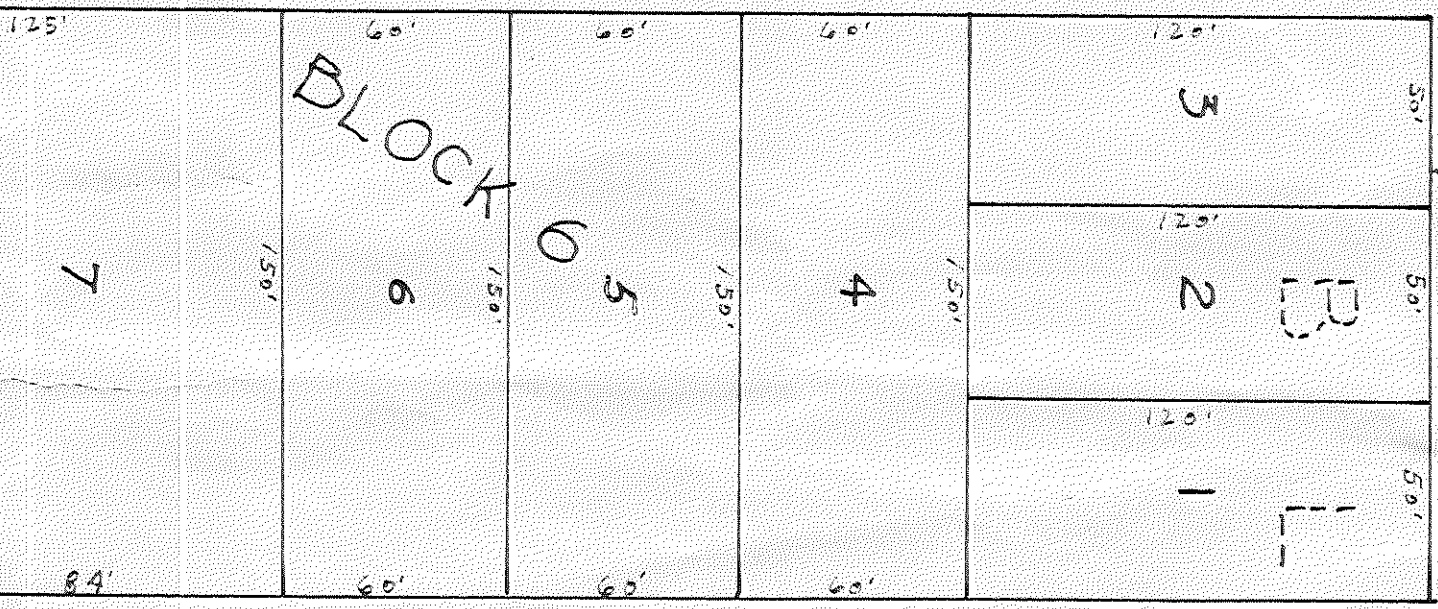
RAILROAD AVENUE



SMITHSON AVENUE

WILSON AVENUE

McLERAN AVENUE



WELBORN HEIGHTS

A SUBDIVISION OF
 BLOCKS D & E
 of the original survey of the
 Town of Welborn, Florida, and
 7 acres in SW Corner of SW
 1/4 of NW 1/4 of Sec. 15, Twp. 35
 of Range 15E, except a 3-acre
 strip off East side
 Scale 1" = 50' Surveyed by C.W. Brown
 Aug. 14, 1925.

SW Corner of 7 Acres
 noted in Description